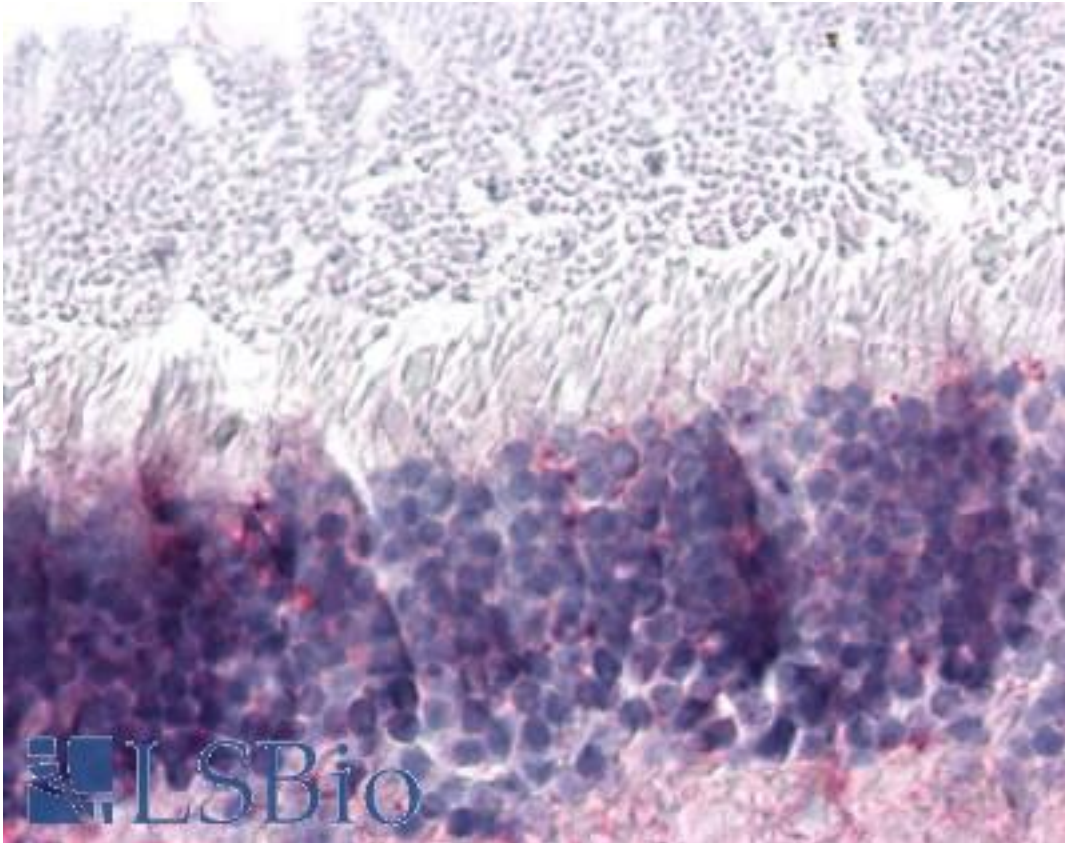


NR2E3 / PNR Rabbit anti-Human Polyclonal (Ligand-binding Domain) Antibody - LS-A5770 - LSBio	
CatalogID:	LS-A5770
Target:	nuclear receptor subfamily 2, group E, member 3 (NR2E3)
Synonyms:	NR2E3 Antibody, ESCS Antibody, PNR Antibody, RNR Antibody, Rd7 Antibody, RP37 Antibody
Family / Subfamily:	NHR / NR2 Hepatocyte NF4-like
Host	NR2E3 antibody was produced in Rabbit
Clonality:	Polyclonal
Immunogen Species:	NR2E3 / PNR antibody was raised against Human
Antigen Type:	Synthetic peptide
Immunogen:	NR2E3 / PNR antibody was raised against synthetic 19 amino acid peptide from ligand-binding domain of human NR2E3. Percent identity with other species by BLAST analysis: Human, Chimpanzee, Gorilla, Gibbon, Monkey, Mouse, Hamster, Elephant, Panda, Bovine, Bat, Horse, Pig (100%); Marmoset (95%).
Specificity:	Human NR2E3. BLAST analysis of the peptide immunogen showed no homology with other human proteins.
Epitope:	Ligand-binding Domain
Reactivity:	Human, Chimpanzee, Gorilla, Gibbon, Mouse, Bat, Bovine, Hamster, Horse, Pig
Predicted Reactivity:	Monkey
Purification:	Immunoaffinity purified
Presentation:	PBS, 0.1% sodium azide.
Recommended Storage:	Long term: -70°C; Short term: +4°C
Uses:	IHC - Paraffin (30 µg/ml) (Optimal dilution to be determined by the researcher)
Size:	50 µg
Concentration:	1 mg/ml

Immunohistochemistry Image:



Anti-NR2E3 antibody LS-A5770 IHC of human retina. Immunohistochemistry of formalin-fixed, paraffin-embedded tissue after heat-induced antigen retrieval.

Requested From:

Japan

Laboratory Reagent For In Vitro Research Use Only

Not for resale without prior written consent from LifeSpan BioSciences, Inc.

Created on 9/23/2014

© 2014 LifeSpan BioSciences