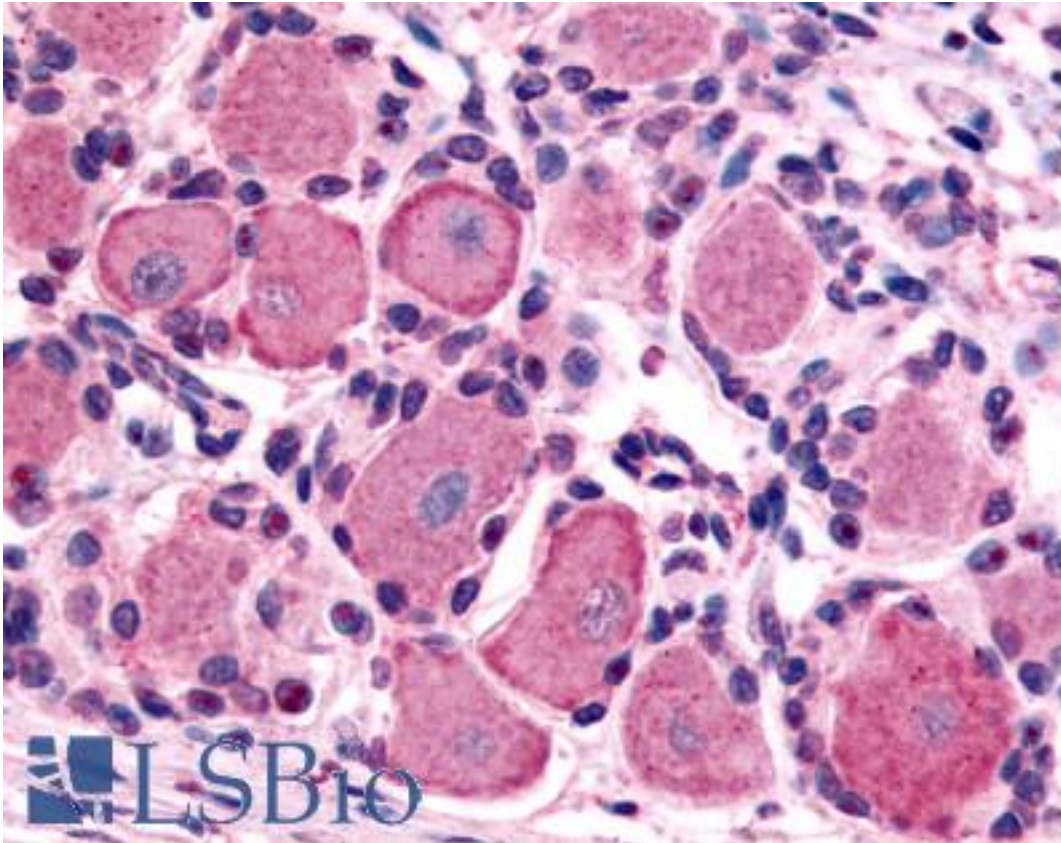


| HTR1D / 5-HT1D Receptor Rabbit anti-Human Polyclonal (Cytoplasmic Domain) Antibody - LS-A577 - LSBio | |
|--|--|
| CatalogID: | LS-A577 |
| Target: | 5-hydroxytryptamine (serotonin) receptor 1D, G protein-coupled (HTR1D) |
| Synonyms: | HTR1D Antibody, 5-HT1d alpha receptor Antibody, 5HT1D Receptor Antibody, 5-HT1d-type serotonin receptor Antibody, 5-HT1D Antibody, 5-HT-1D Antibody, 5-HT-1D-alpha Antibody, 5-HT1d receptor Antibody, HT1d receptor Antibody, HTR1DA Antibody, HTRL Antibody, HT1DA Antibody, Serotonin receptor 1D Antibody, RDC4 Antibody, Gpcr14 Antibody, Serotonin 1d receptor Antibody, Serotonin 5-HT-1d receptor Antibody |
| Family / Subfamily: | GPCR / Serotonin |
| Host | HTR1D antibody was produced in Rabbit |
| Clonality: | Polyclonal |
| Immunogen Species: | HTR1D / 5-HT1D Receptor antibody was raised against Human |
| Antigen Type: | Synthetic peptide |
| Immunogen: | HTR1D / 5-HT1D Receptor antibody was raised against synthetic 16 amino acid peptide from 3rd cytoplasmic domain of human 5HT1D Receptor. Percent identity with other species by BLAST analysis: Human, Gorilla, Gibbon, Monkey, Marmoset (100%); Mouse, Rat, Panda, Bovine, Bat, Horse, Rabbit, Pig, Guinea pig, Turkey, Chicken (94%); Hamster, Elephant, Opossum (88%). |
| Specificity: | Human 5HT1D Receptor. BLAST analysis of the peptide immunogen showed no homology with other human proteins. |
| Epitope: | Cytoplasmic Domain |
| Reactivity: | Human, Gorilla, Gibbon, Monkey |
| Predicted Reactivity: | Mouse, Rat, Bat, Bovine, Guinea pig, Horse, Pig, Rabbit, Chicken |
| Purification: | Immunoaffinity purified |
| Presentation: | PBS, 0.1% sodium azide. |
| Recommended Storage: | Long term: -70°C; Short term: +4°C |
| Uses: | IHC - Paraffin (17 µg/ml) (Optimal dilution to be determined by the researcher) |
| Size: | 50 µg |
| Concentration: | 1 mg/ml |

Immunohistochemistry Image:



Anti-5HT1D Receptor antibody LS-A577 IHC of human spinal cord, dorsal root ganglion. Immunohistochemistry of formalin-fixed, paraffin-embedded tissue after heat-induced antigen retrieval.

Requested From:

Japan

Laboratory Reagent For In Vitro Research Use Only

Not for resale without prior written consent from LifeSpan BioSciences, Inc.

Created on 9/23/2014

© 2014 LifeSpan BioSciences