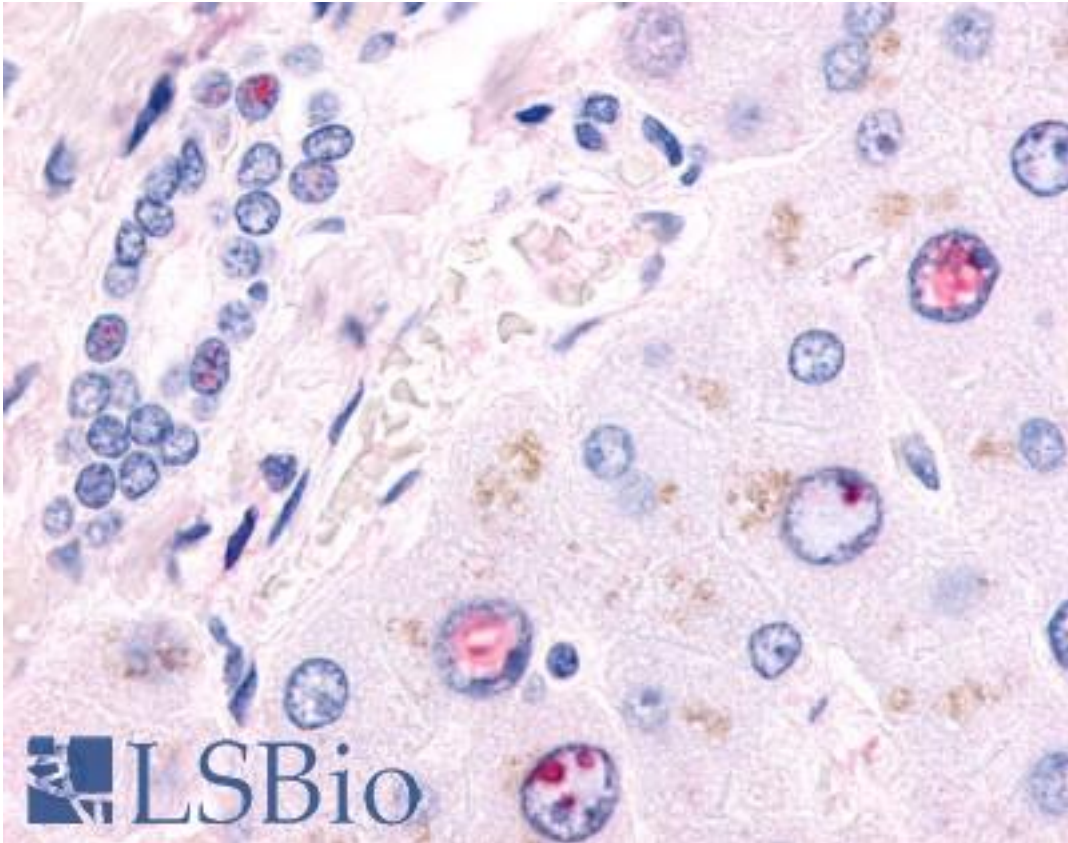


EAR2 / NR2F6 Rabbit anti-Human Polyclonal (Ligand-binding Domain) Antibody - LS-A5701 - LSBio	
CatalogID:	LS-A5701
Target:	nuclear receptor subfamily 2, group F, member 6 (NR2F6)
Synonyms:	NR2F6 Antibody, Erba related 2 Antibody, ERBAL2 Antibody, EAR-2 Antibody, EAR2 Antibody, ERBA-related gene-2 Antibody, V-erbA-related protein 2 Antibody
Family / Subfamily:	NHR / NR2 Hepatocyte NF4-like
Host	NR2F6 antibody was produced in Rabbit
Clonality:	Polyclonal
Immunogen Species:	EAR2 / NR2F6 antibody was raised against Human
Antigen Type:	Synthetic peptide
Immunogen:	EAR2 / NR2F6 antibody was raised against synthetic 16 amino acid peptide from ligand-binding domain of human NR2F6. Percent identity with other species by BLAST analysis: Human, Gorilla, Monkey, Marmoset, Mouse, Rat, Hamster, Elephant, Panda, Dog, Bovine, Bat, Pig, Platypus, Xenopus, Stickleback, Pufferfish, Zebrafish (100%); Opossum (94%).
Specificity:	Human NR2F6. BLAST analysis of the peptide immunogen showed no homology with other human proteins.
Epitope:	Ligand-binding Domain
Reactivity:	Human, Gorilla, Monkey, Mouse, Rat, Bat, Bovine, Dog, Hamster, Pig, Xenopus, Zebrafish
Purification:	Immunoaffinity purified
Presentation:	PBS, 0.1% sodium azide.
Recommended Storage:	Long term: -70°C; Short term: +4°C
Uses:	IHC - Paraffin (5 µg/ml) (Optimal dilution to be determined by the researcher)
Size:	50 µg
Concentration:	1 mg/ml

Immunohistochemistry Image:



Anti-NR2F6 antibody LS-A5701 IHC of human liver. Immunohistochemistry of formalin-fixed, paraffin-embedded tissue after heat-induced antigen retrieval.

Requested From:

Japan

Laboratory Reagent For In Vitro Research Use Only

Not for resale without prior written consent from LifeSpan BioSciences, Inc.

Created on 9/23/2014

© 2014 LifeSpan BioSciences