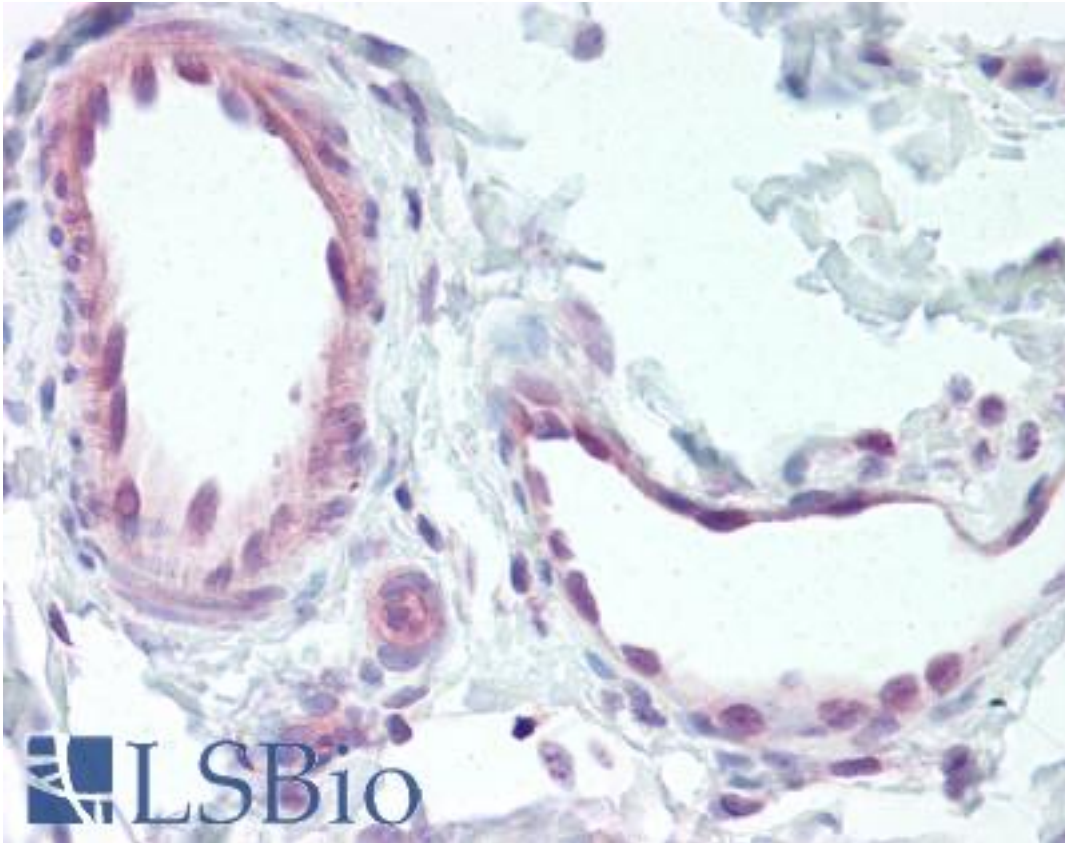


EDNRB / Endothelin B Receptor Rabbit anti-Human Polyclonal (C-Terminus) Antibody - LS-A57 - LSBio	
CatalogID:	LS-A57
Target:	endothelin receptor type B (EDNRB)
Synonyms:	EDNRB Antibody, ABCDS Antibody, Endothelin B receptor Antibody, Etb receptor Antibody, ET-B Antibody, Et-b receptor Antibody, Et-b-r Antibody, ET-RB Antibody, ETBR Antibody, ETRB Antibody, Etb-svr Antibody, WS4A Antibody, Endothelin receptor type B Antibody, ET-BR Antibody, ETB Antibody, HSCR Antibody, HSCR2 Antibody
Family / Subfamily:	GPCR / Endothelin
Host	EDNRB antibody was produced in Rabbit
Clonality:	Polyclonal
Immunogen Species:	EDNRB / Endothelin B Receptor antibody was raised against Human
Antigen Type:	Synthetic peptide
Immunogen:	EDNRB / Endothelin B Receptor antibody was raised against synthetic 19 amino acid peptide from C-terminus of human EDNRB. Percent identity with other species by BLAST analysis: Human, Gorilla, Gibbon, Monkey, Marmoset, Mouse, Rat, Goat, Hamster, Panda, Bovine, Dog, Rabbit, Pig, Opossum, Platypus (100%); Elephant, Bat, Horse (95%).
Specificity:	Human EDNRB. BLAST analysis of the peptide immunogen showed no homology with other human proteins.
Epitope:	C-Terminus
Reactivity:	Human, Gorilla, Gibbon, Monkey, Mouse, Rat, Bovine, Dog, Goat, Hamster, Pig, Rabbit
Predicted Reactivity:	Bat, Horse
Purification:	Immunoaffinity purified
Presentation:	PBS, 0.1% sodium azide.
Recommended Storage:	Long term: -70°C; Short term: +4°C
Uses:	IHC - Paraffin (8 µg/ml) (Optimal dilution to be determined by the researcher)
Size:	50 µg
Concentration:	1 mg/ml

Immunohistochemistry Image:



Anti-EDNRB antibody LS-A57 IHC of human vessels. Immunohistochemistry of formalin-fixed, paraffin-embedded tissue after heat-induced antigen retrieval.

Requested From:

Japan

Laboratory Reagent For In Vitro Research Use Only

Not for resale without prior written consent from LifeSpan BioSciences, Inc.

Created on 9/23/2014

© 2014 LifeSpan BioSciences