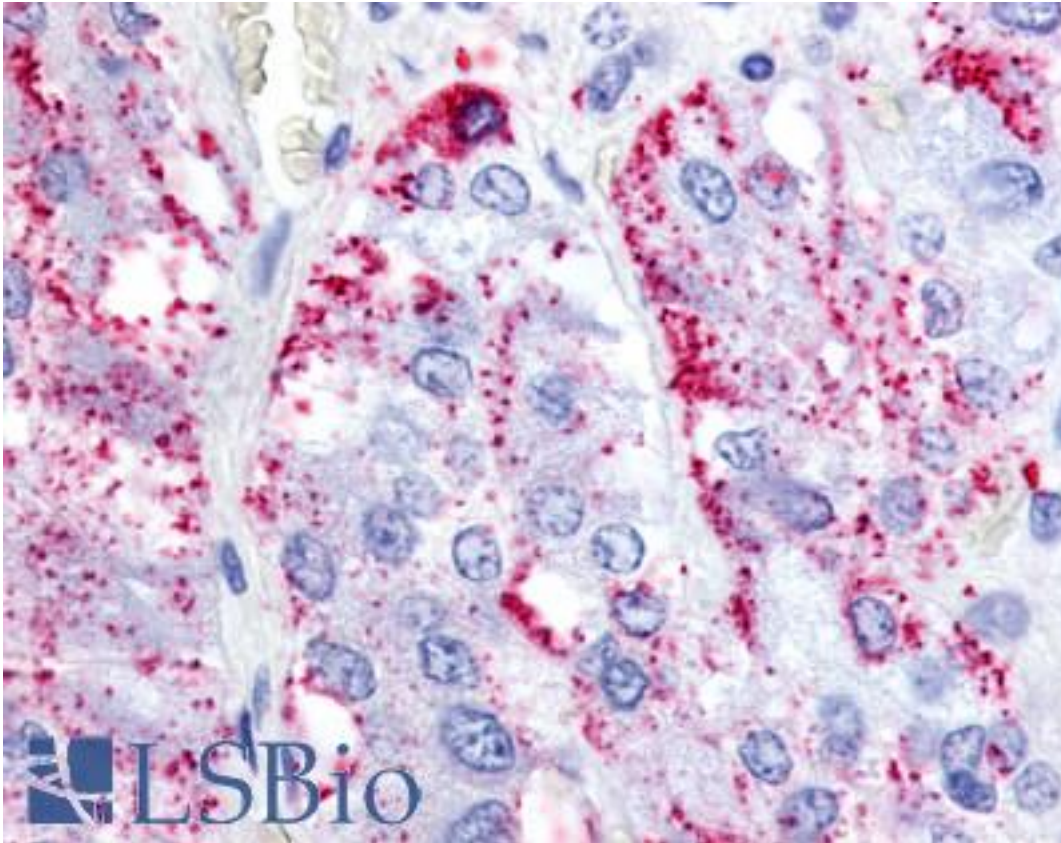


RXFP1/ LGR7 Rabbit anti-Human Polyclonal (N-Terminus) Antibody - LS-A565 - LSBio

CatalogID:	LS-A565
Target:	relaxin/insulin-like family peptide receptor 1 (RXFP1)
Synonyms:	RXFP1 Antibody, LGR7 Antibody, LGR7.1 Antibody, LGR7.10 Antibody, LGR7.2 Antibody, RXFP1 Antibody, Relaxin receptor 1 Antibody
Family / Subfamily:	GPCR / Relaxin
Host	RXFP1 antibody was produced in Rabbit
Clonality:	Polyclonal
Immunogen Species:	RXFP1/ LGR7 antibody was raised against Human
Antigen Type:	Synthetic peptide
Immunogen:	RXFP1/ LGR7 antibody was raised against synthetic 19 amino acid peptide from N-terminal extracellular domain of human RXFP1. Percent identity with other species by BLAST analysis: Human, Gorilla, Gibbon, Marmoset, Panda, Pig (100%); Orangutan, Monkey, Rat, Bovine, Dog, Horse (95%); Mouse, Elephant, Opossum (89%); Turkey, Platypus (84%).
Specificity:	Human RXFP1. BLAST analysis of the peptide immunogen showed no homology with other human proteins, except GPR22 (58%).
Epitope:	N-Terminus
Reactivity:	Human, Gorilla, Gibbon, Pig
Predicted Reactivity:	Orangutan, Monkey, Rat, Bovine, Dog, Horse
Purification:	Immunoaffinity purified
Presentation:	PBS, 0.1% sodium azide.
Recommended Storage:	Long term: -70°C; Short term: +4°C
Uses:	IHC - Paraffin (40 µg/ml) (Optimal dilution to be determined by the researcher)
Size:	50 µg
Concentration:	1 mg/ml

Immunohistochemistry Image:



Anti-RXFP1 antibody LS-A565 IHC of human adrenal medulla. Immunohistochemistry of formalin-fixed, paraffin-embedded tissue after heat-induced antigen retrieval.

Requested From:

Japan

Laboratory Reagent For In Vitro Research Use Only

Not for resale without prior written consent from LifeSpan BioSciences, Inc.

Created on 9/23/2014

© 2014 LifeSpan BioSciences