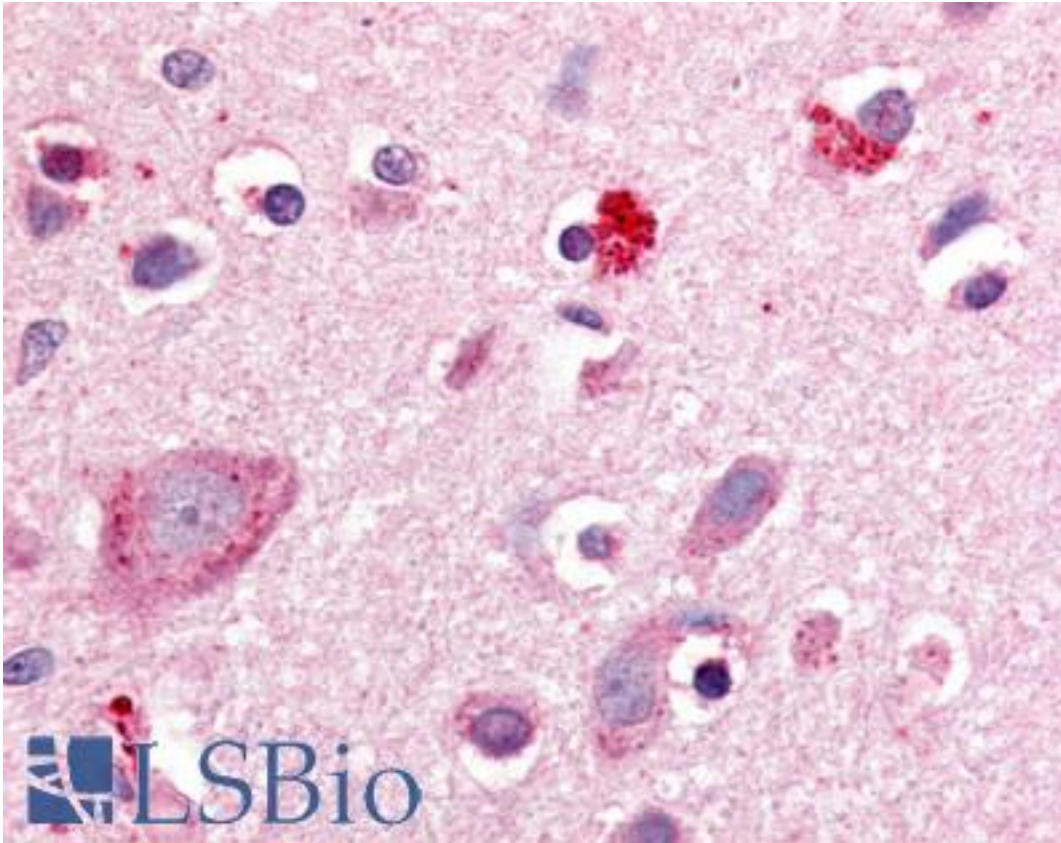


RORB / ROR Beta Rabbit anti-Human Polyclonal (Hinge Domain) Antibody - LS-A5531 - LSBio

CatalogID:	LS-A5531
Target:	RAR-related orphan receptor B (RORB)
Synonyms:	RORB Antibody, BA133M9.1 Antibody, Nuclear receptor ROR-beta Antibody, NR1F2 Antibody, ROR Beta Antibody, ROR-BETA Antibody, Rorbeta Antibody, RZR-BETA Antibody, Nuclear receptor RZR-beta Antibody, RAR-related orphan receptor B Antibody, RZRB Antibody
Family / Subfamily:	NHR / NR1 Thyroid hormone-like
Host	RORB antibody was produced in Rabbit
Clonality:	Polyclonal
Immunogen Species:	RORB / ROR Beta antibody was raised against Human
Antigen Type:	Synthetic peptide
Immunogen:	RORB / ROR Beta antibody was raised against synthetic 18 amino acid peptide from hinge domain of human ROR Beta. Percent identity with other species by BLAST analysis: Human, Gorilla, Gibbon, Monkey, Marmoset, Mouse, Rat, Sheep, Hamster, Panda, Bovine, Dog, Bat, Horse, Rabbit, Opossum, Chicken, Platypus, Lizard (100%); Elephant, Xenopus (94%); Zebrafish (83%).
Specificity:	Human ROR Beta. BLAST analysis of the peptide immunogen showed no homology with other human proteins.
Epitope:	Hinge Domain
Reactivity:	Human, Gorilla, Gibbon, Monkey, Mouse, Rat, Bat, Bovine, Dog, Hamster, Horse, Rabbit, Sheep, Chicken
Predicted Reactivity:	Xenopus
Purification:	Immunoaffinity purified
Presentation:	PBS, 0.1% sodium azide.
Recommended Storage:	Long term: -70°C; Short term: +4°C
Uses:	IHC - Paraffin (20 µg/ml) (Optimal dilution to be determined by the researcher)
Size:	50 µg
Concentration:	1 mg/ml

Immunohistochemistry Image:



Anti-ROR Beta antibody LS-A5531 IHC of human brain, cortex. Immunohistochemistry of formalin-fixed, paraffin-embedded tissue after heat-induced antigen retrieval.

Requested From:

Japan

Laboratory Reagent For In Vitro Research Use Only

Not for resale without prior written consent from LifeSpan BioSciences, Inc.

Created on 9/23/2014

© 2014 LifeSpan BioSciences