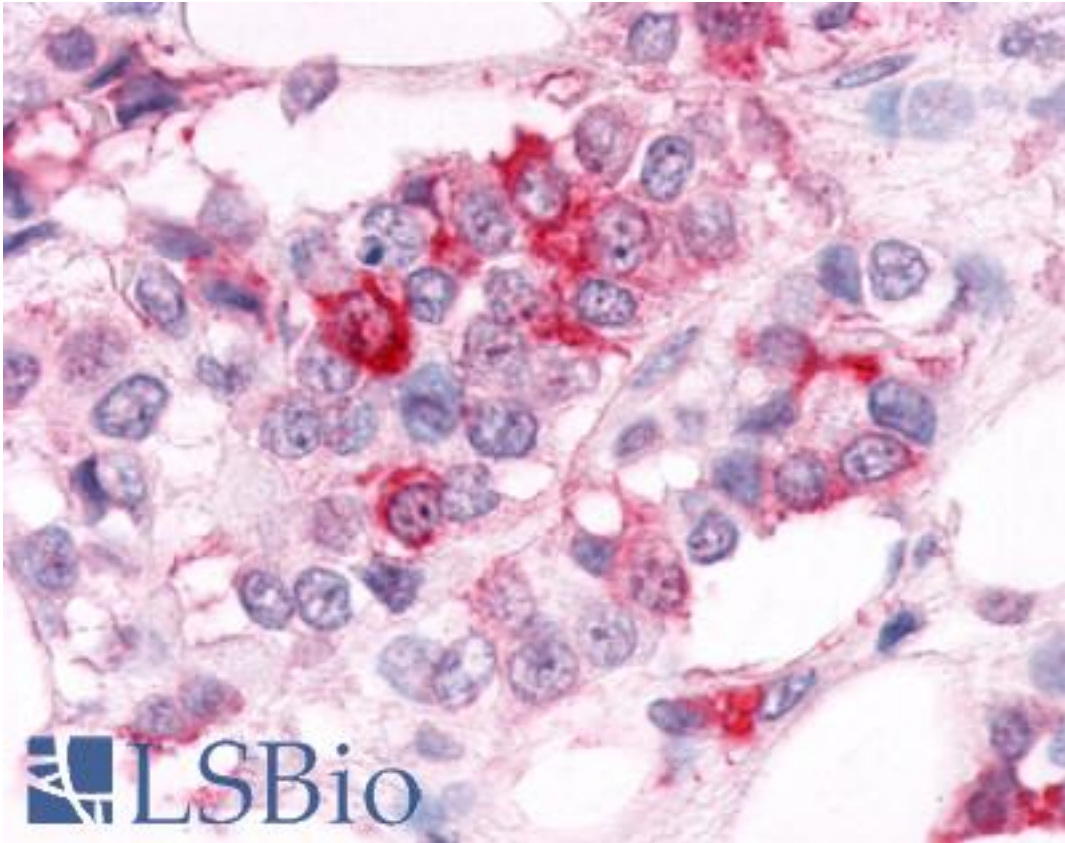


ESRRA / ERR Alpha Rabbit anti-Human Polyclonal (Ligand-binding Domain) Antibody - LS-A5480 - LSBio	
CatalogID:	LS-A5480
Target:	estrogen-related receptor alpha (ESRRA)
Synonyms:	ESRRA Antibody, ERRa Antibody, ERR1 Antibody, HERR1 Antibody, NR3B1 Antibody, Steroid hormone receptor ERR1 Antibody, ERR-alpha Antibody, ERRalpha Antibody, ESRL1 Antibody, Estrogen receptor-like 1 Antibody
Family / Subfamily:	NHR / NR3 Steroid receptor
Host	ESRRA antibody was produced in Rabbit
Clonality:	Polyclonal
Immunogen Species:	ESRRA / ERR Alpha antibody was raised against Human
Antigen Type:	Synthetic peptide
Immunogen:	ESRRA / ERR Alpha antibody was raised against synthetic 15 amino acid peptide from ligand-binding domain of human ESRRA. Percent identity with other species by BLAST analysis: Human, Gorilla, Gibbon, Monkey, Marmoset, Mouse, Rat, Hamster, Elephant, Panda, Bovine, Bat, Dog, Horse, Pig (100%).
Specificity:	Human ESRRA. BLAST analysis of the peptide immunogen showed no homology with other human proteins, except ESRRG (60%).
Epitope:	Ligand-binding Domain
Reactivity:	Human, Gorilla, Gibbon, Monkey, Mouse, Rat, Bat, Bovine, Dog, Hamster, Horse, Pig
Purification:	Immunoaffinity purified
Presentation:	PBS, 0.1% sodium azide.
Recommended Storage:	Long term: -70°C; Short term: +4°C
Uses:	IHC - Paraffin (11 - 21 µg/ml) (Optimal dilution to be determined by the researcher)
Size:	50 µg
Concentration:	1 mg/ml

Immunohistochemistry Image:



Anti-ESRRA antibody LS-A5480 IHC of human breast carcinoma. Immunohistochemistry of formalin-fixed, paraffin-embedded tissue after heat-induced antigen retrieval.

Requested From:

Japan

Laboratory Reagent For In Vitro Research Use Only

Not for resale without prior written consent from LifeSpan BioSciences, Inc.

Created on 9/23/2014

© 2014 LifeSpan BioSciences