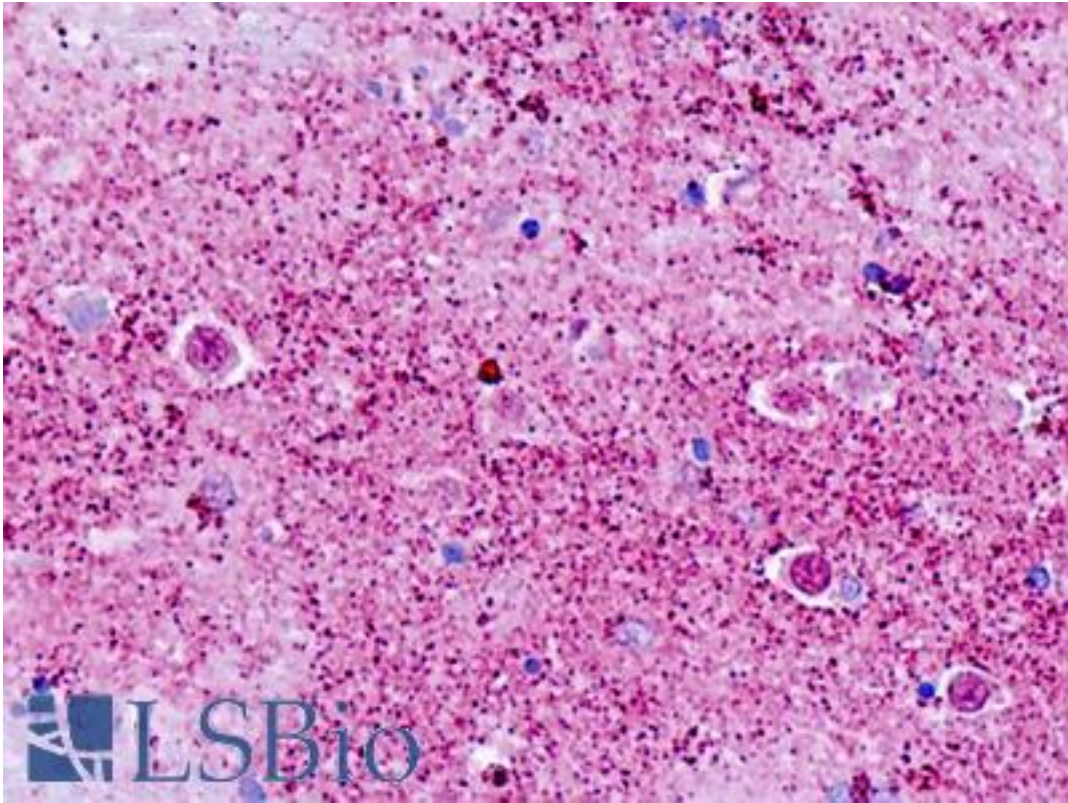


GPR173 / SREB3 Rabbit anti-Human Polyclonal (C-Terminus) Antibody - LS-A526 - LSBio	
<b>CatalogID:</b>	LS-A526
<b>Target:</b>	G protein-coupled receptor 173 (GPR173)
<b>Synonyms:</b>	GPR173 Antibody, G protein coupled receptor 173 Antibody, G-protein coupled receptor 173 Antibody, G protein-coupled receptor 173 Antibody, SREB3 Antibody
<b>Family / Subfamily:</b>	GPCR / Orphan-A
<b>Host</b>	GPR173 antibody was produced in Rabbit
<b>Clonality:</b>	Polyclonal
<b>Immunogen Species:</b>	GPR173 / SREB3 antibody was raised against Human
<b>Antigen Type:</b>	Synthetic peptide
<b>Immunogen:</b>	GPR173 / SREB3 antibody was raised against synthetic 20 amino acid peptide from C-terminus of human GPR173. Percent identity with other species by BLAST analysis: Human, Gorilla, Gibbon, Monkey, Marmoset, Mouse, Rat, Dog, Bat, Bovine, Rabbit (100%); Panda (95%); Hamster, Elephant (90%).
<b>Specificity:</b>	Human GPR173. BLAST analysis of the peptide immunogen showed no homology with other human proteins.
<b>Epitope:</b>	C-Terminus
<b>Reactivity:</b>	Human, Gorilla, Gibbon, Monkey, Mouse, Rat, Bat, Bovine, Dog, Rabbit
<b>Predicted Reactivity:</b>	Hamster
<b>Purification:</b>	Immunoaffinity purified
<b>Presentation:</b>	PBS, 0.1% sodium azide.
<b>Recommended Storage:</b>	Long term: -70°C; Short term: +4°C
<b>Uses:</b>	IHC - Paraffin (8.4 µg/ml) (Optimal dilution to be determined by the researcher)
<b>Size:</b>	50 µg
<b>Concentration:</b>	1 mg/ml

**Immunohistochemistry Image:**



Human, Brain, Cortex: Formalin-Fixed Paraffin-Embedded (FFPE)

**Requested From:**

Japan

Laboratory Reagent For In Vitro Research Use Only

Not for resale without prior written consent from LifeSpan BioSciences, Inc.

Created on 9/23/2014

© 2014 LifeSpan BioSciences