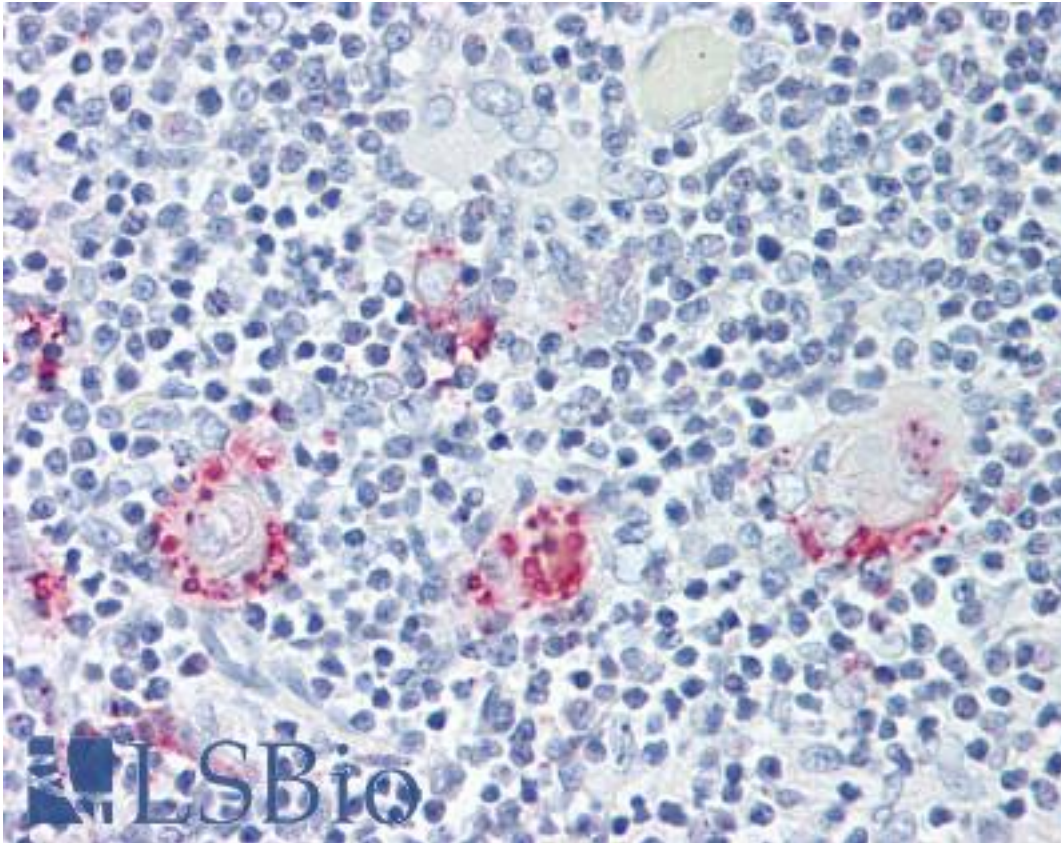


RORC / ROR Gamma Rabbit anti-Human Polyclonal (Ligand-binding Domain) Antibody - LS-A5200 - LSBio	
CatalogID:	LS-A5200
Target:	RAR-related orphan receptor C (RORC)
Synonyms:	RORC Antibody, Nuclear receptor ROR-gamma Antibody, Nuclear receptor RZR-gamma Antibody, RAR-related orphan receptor C Antibody, RORG Antibody, RORgamma Antibody, TOR Antibody, ROR Gamma Antibody, RZRG Antibody, NR1F3 Antibody, RZR-GAMMA Antibody
Family / Subfamily:	NHR / NR1 Thyroid hormone-like
Host	RORC antibody was produced in Rabbit
Clonality:	Polyclonal
Immunogen Species:	RORC / ROR Gamma antibody was raised against Human
Antigen Type:	Synthetic peptide
Immunogen:	RORC / ROR Gamma antibody was raised against synthetic 19 amino acid peptide from ligand-binding domain of human ROR Gamma. Percent identity with other species by BLAST analysis: Human, Chimpanzee, Gorilla, Orangutan, Gibbon, Monkey, Marmoset, Tamarin, Elephant (100%); Mouse, Rat, Hamster, Panda, Bat (95%); Bovine, Dog, Rabbit, Horse, Opossum (89%).
Specificity:	Human ROR Gamma. BLAST analysis of the peptide immunogen showed no homology with other human proteins.
Epitope:	Ligand-binding Domain
Reactivity:	Human, Chimpanzee, Gorilla, Orangutan, Gibbon, Monkey
Predicted Reactivity:	Mouse, Rat, Bat, Hamster
Purification:	Immunoaffinity purified
Presentation:	PBS, 0.1% sodium azide.
Recommended Storage:	Long term: -70°C; Short term: +4°C
Uses:	IHC - Paraffin (22 µg/ml) (Optimal dilution to be determined by the researcher)
Size:	50 µg
Concentration:	1 mg/ml

Immunohistochemistry Image:



Anti-ROR Gamma antibody LS-A5200 IHC of human thymus. Immunohistochemistry of formalin-fixed, paraffin-embedded tissue after heat-induced antigen retrieval.

Requested From:

Japan

Laboratory Reagent For In Vitro Research Use Only

Not for resale without prior written consent from LifeSpan BioSciences, Inc.

Created on 9/23/2014

© 2014 LifeSpan BioSciences