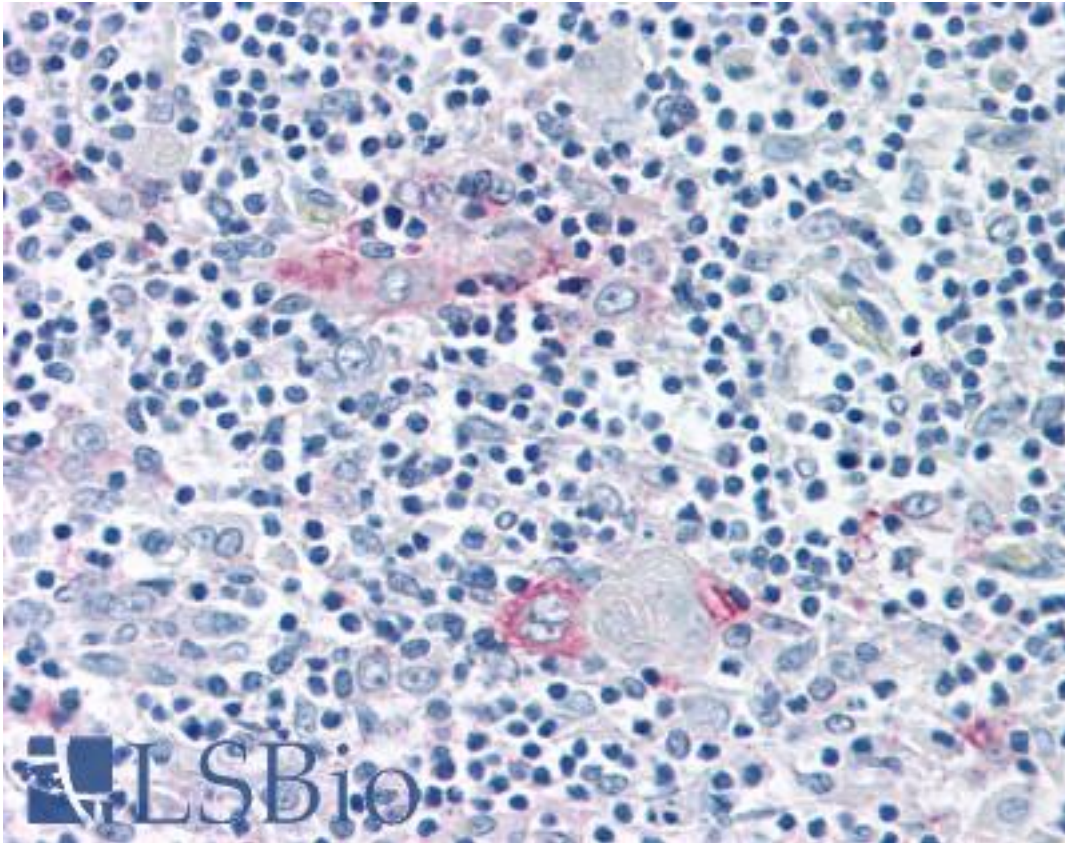


RORC / ROR Gamma Rabbit anti-Human Polyclonal (Ligand-binding Domain) Antibody - LS-A5195 - LSBio	
<b>CatalogID:</b>	LS-A5195
<b>Target:</b>	RAR-related orphan receptor C (RORC)
<b>Synonyms:</b>	RORC Antibody, Nuclear receptor ROR-gamma Antibody, Nuclear receptor RZR-gamma Antibody, RAR-related orphan receptor C Antibody, RORG Antibody, RORgamma Antibody, TOR Antibody, ROR Gamma Antibody, RZRG Antibody, NR1F3 Antibody, RZR-GAMMA Antibody
<b>Family / Subfamily:</b>	NHR / NR1 Thyroid hormone-like
<b>Host</b>	RORC antibody was produced in Rabbit
<b>Clonality:</b>	Polyclonal
<b>Immunogen Species:</b>	RORC / ROR Gamma antibody was raised against Human
<b>Antigen Type:</b>	Synthetic peptide
<b>Immunogen:</b>	RORC / ROR Gamma antibody was raised against synthetic 16 amino acid peptide from ligand-binding domain of human ROR Gamma. Percent identity with other species by BLAST analysis: Human, Chimpanzee, Gorilla, Orangutan, Gibbon, Monkey, Marmoset, Tamarin, Opossum (100%); Elephant, Panda, Bovine, Bat, Dog, Horse, Rabbit (94%); Mouse, Rat, Hamster (88%).
<b>Specificity:</b>	Human ROR Gamma. BLAST analysis of the peptide immunogen showed no homology with other human proteins, except RORA (56%).
<b>Epitope:</b>	Ligand-binding Domain
<b>Reactivity:</b>	Human, Chimpanzee, Gorilla, Orangutan, Gibbon, Monkey
<b>Predicted Reactivity:</b>	Bat, Bovine, Dog, Horse, Rabbit
<b>Purification:</b>	Immunoaffinity purified
<b>Presentation:</b>	PBS, 0.1% sodium azide.
<b>Recommended Storage:</b>	Long term: -70°C; Short term: +4°C
<b>Uses:</b>	IHC - Paraffin (15 - 20 µg/ml), ELISA (Optimal dilution to be determined by the researcher)
<b>Size:</b>	50 µg
<b>Concentration:</b>	1 mg/ml

**Immunohistochemistry Image:**



Anti-ROR Gamma antibody LS-A5195 IHC of human thymus. Immunohistochemistry of formalin-fixed, paraffin-embedded tissue after heat-induced antigen retrieval.

**Requested From:**

Japan

Laboratory Reagent For In Vitro Research Use Only

Not for resale without prior written consent from LifeSpan BioSciences, Inc.

Created on 9/23/2014

© 2014 LifeSpan BioSciences