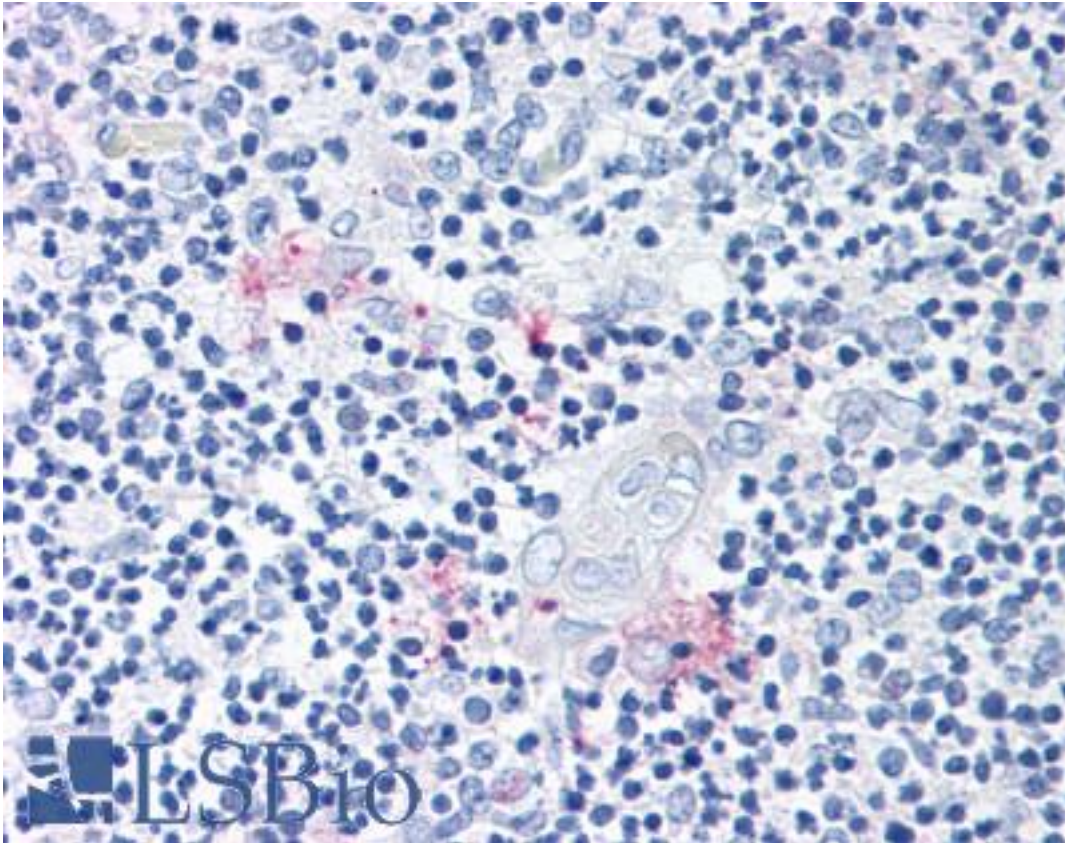


| RORC / ROR Gamma Rabbit anti-Human Polyclonal (Modulating Domain) Antibody - LS-A5188 - LSBio | |
|---|--|
| CatalogID: | LS-A5188 |
| Target: | RAR-related orphan receptor C (RORC) |
| Synonyms: | RORC Antibody, Nuclear receptor ROR-gamma Antibody, Nuclear receptor RZR-gamma Antibody, RAR-related orphan receptor C Antibody, RORG Antibody, RORgamma Antibody, TOR Antibody, ROR Gamma Antibody, RZRG Antibody, NR1F3 Antibody, RZR-GAMMA Antibody |
| Family / Subfamily: | NHR / NR1 Thyroid hormone-like |
| Host | RORC antibody was produced in Rabbit |
| Clonality: | Polyclonal |
| Immunogen Species: | RORC / ROR Gamma antibody was raised against Human |
| Antigen Type: | Synthetic peptide |
| Immunogen: | RORC / ROR Gamma antibody was raised against synthetic 14 amino acid peptide from modulating domain of human ROR Gamma. Percent identity with other species by BLAST analysis: Human, Gorilla (100%); Orangutan, Monkey, Dog, Rabbit (93%); Marmoset, Mouse, Rat, Bat, Bovine (86%). |
| Specificity: | Human ROR Gamma. BLAST analysis of the peptide immunogen showed no homology with other human proteins. |
| Epitope: | Modulating Domain |
| Reactivity: | Human, Gorilla |
| Predicted Reactivity: | Orangutan, Monkey, Dog, Rabbit |
| Purification: | Immunoaffinity purified |
| Presentation: | PBS, 0.1% sodium azide. |
| Recommended Storage: | Long term: -70°C; Short term: +4°C |
| Uses: | IHC - Paraffin (10 - 15 µg/ml), ELISA (Optimal dilution to be determined by the researcher) |
| Size: | 50 µg |
| Concentration: | 1 mg/ml |

Immunohistochemistry Image:



Anti-ROR Gamma antibody LS-A5188 IHC of human thymus. Immunohistochemistry of formalin-fixed, paraffin-embedded tissue after heat-induced antigen retrieval.

Requested From:

Japan

Laboratory Reagent For In Vitro Research Use Only

Not for resale without prior written consent from LifeSpan BioSciences, Inc.

Created on 9/23/2014

© 2014 LifeSpan BioSciences