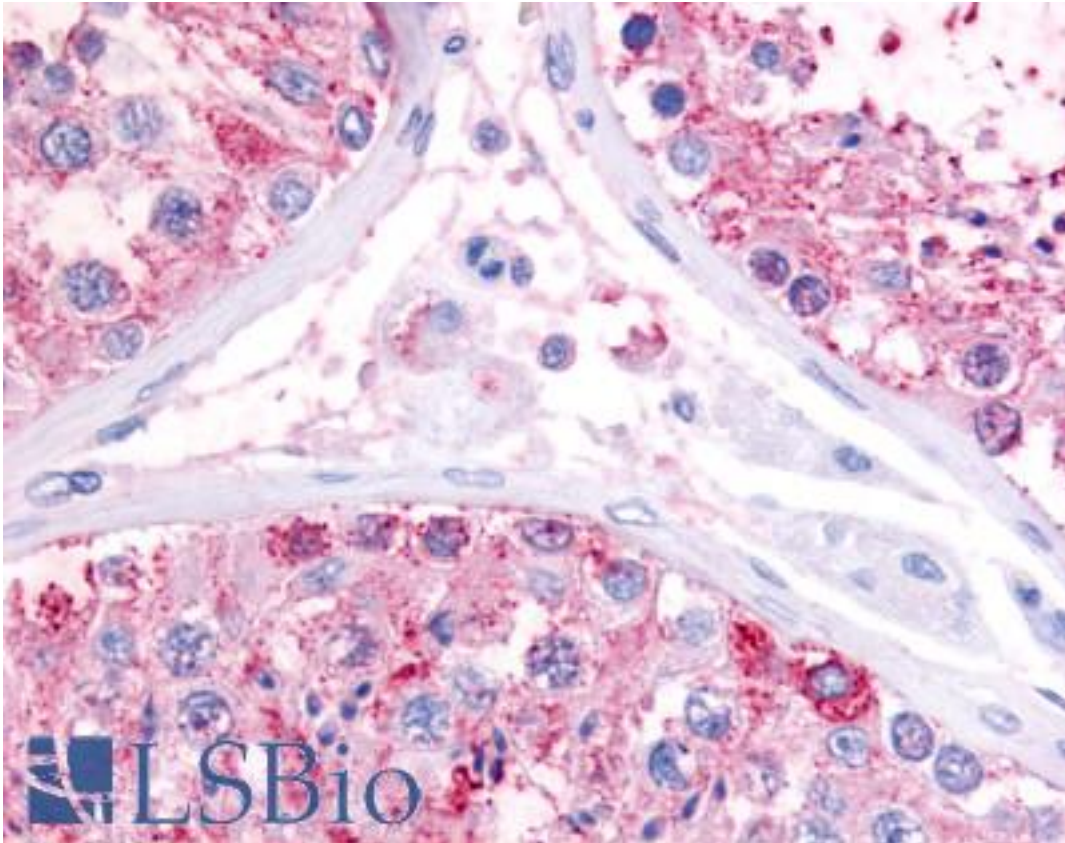


GPR22 Rabbit anti-Human Polyclonal (Cytoplasmic Domain) Antibody - LS-A5149 - LSBio

CatalogID:	LS-A5149
Target:	G protein-coupled receptor 22 (GPR22)
Synonyms:	GPR22 Antibody, G protein-coupled receptor 22 Antibody
Family / Subfamily:	GPCR / Orphan-A
Host	GPR22 antibody was produced in Rabbit
Clonality:	Polyclonal
Immunogen Species:	GPR22 antibody was raised against Human
Antigen Type:	Synthetic peptide
Immunogen:	GPR22 antibody was raised against synthetic 15 amino acid peptide from 3rd cytoplasmic domain of human GPR22. Percent identity with other species by BLAST analysis: Human, Gorilla, Monkey, Marmoset (100%); Elephant, Panda, Bat, Horse, Rabbit, Pig, Turkey, Chicken (93%); Rat, Bovine (87%); Mouse, Lizard, Xenopus (80%).
Specificity:	Human GPR22. BLAST analysis of the peptide immunogen showed no homology with other human proteins.
Epitope:	Cytoplasmic Domain
Reactivity:	Human, Gorilla, Monkey
Predicted Reactivity:	Bat, Horse, Pig, Rabbit, Chicken
Purification:	Immunoaffinity purified
Presentation:	PBS, 0.1% sodium azide.
Recommended Storage:	Long term: -70°C; Short term: +4°C
Uses:	IHC - Paraffin (20 µg/ml) (Optimal dilution to be determined by the researcher)
Size:	50 µg
Concentration:	1 mg/ml

Immunohistochemistry Image:



Anti-GPR22 antibody LS-A5149 IHC of human testis. Immunohistochemistry of formalin-fixed, paraffin-embedded tissue after heat-induced antigen retrieval.

Requested From:

Japan

Laboratory Reagent For In Vitro Research Use Only

Not for resale without prior written consent from LifeSpan BioSciences, Inc.

Created on 9/23/2014

© 2014 LifeSpan BioSciences