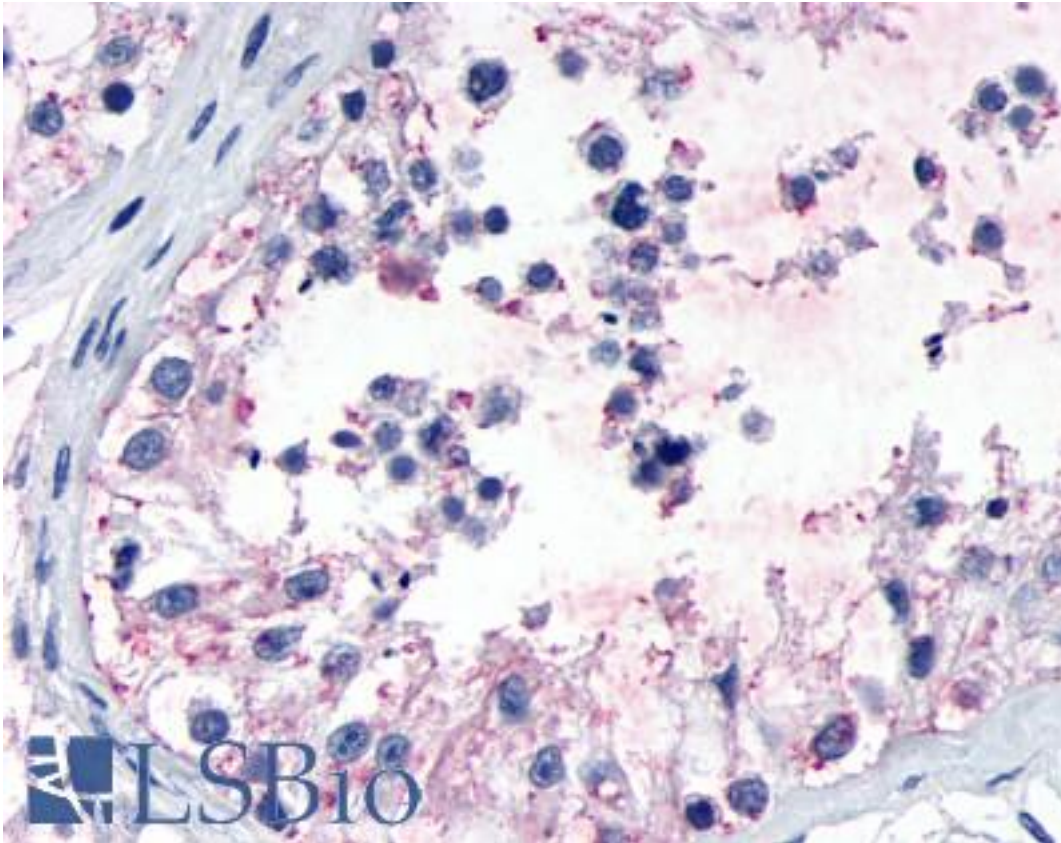


GPR149 / PGR10 Rabbit anti-Human Polyclonal (N-Terminus) Antibody - LS-A5107 - LSBio	
<b>CatalogID:</b>	LS-A5107
<b>Target:</b>	G protein-coupled receptor 149 (GPR149)
<b>Synonyms:</b>	GPR149 Antibody, PGR10 Antibody, G protein-coupled receptor 149 Antibody, IEDA Antibody
<b>Family / Subfamily:</b>	GPCR / Orphan-U
<b>Host</b>	GPR149 antibody was produced in Rabbit
<b>Clonality:</b>	Polyclonal
<b>Immunogen Species:</b>	GPR149 / PGR10 antibody was raised against Human
<b>Antigen Type:</b>	Synthetic peptide
<b>Immunogen:</b>	GPR149 / PGR10 antibody was raised against synthetic 15 amino acid peptide from N-terminal extracellular domain of human GPR149. Percent identity with other species by BLAST analysis: Human, Gorilla, Gibbon, Monkey, Marmoset, Bat, Pig (100%); Rabbit (93%); Élephant, Bovine (87%).
<b>Specificity:</b>	Human GPR149. BLAST analysis of the peptide immunogen showed no homology with other human proteins.
<b>Epitope:</b>	N-Terminus
<b>Reactivity:</b>	Human, Gorilla, Gibbon, Monkey, Bat, Pig
<b>Predicted Reactivity:</b>	Rabbit
<b>Purification:</b>	Immunoaffinity purified
<b>Presentation:</b>	PBS, 0.1% sodium azide.
<b>Recommended Storage:</b>	Long term: -70°C; Short term: +4°C
<b>Uses:</b>	IHC - Paraffin (7 - 18 µg/ml) (Optimal dilution to be determined by the researcher)
<b>Size:</b>	50 µg
<b>Concentration:</b>	1 mg/ml

**Immunohistochemistry Image:**



Anti-GPR149 antibody LS-A5107 IHC of human testis, seminiferous epithelium.  
Immunohistochemistry of formalin-fixed, paraffin-embedded tissue after heat-induced antigen retrieval.

**Requested From:**

Japan

Laboratory Reagent For In Vitro Research Use Only

Not for resale without prior written consent from LifeSpan BioSciences, Inc.

Created on 9/23/2014

© 2014 LifeSpan BioSciences