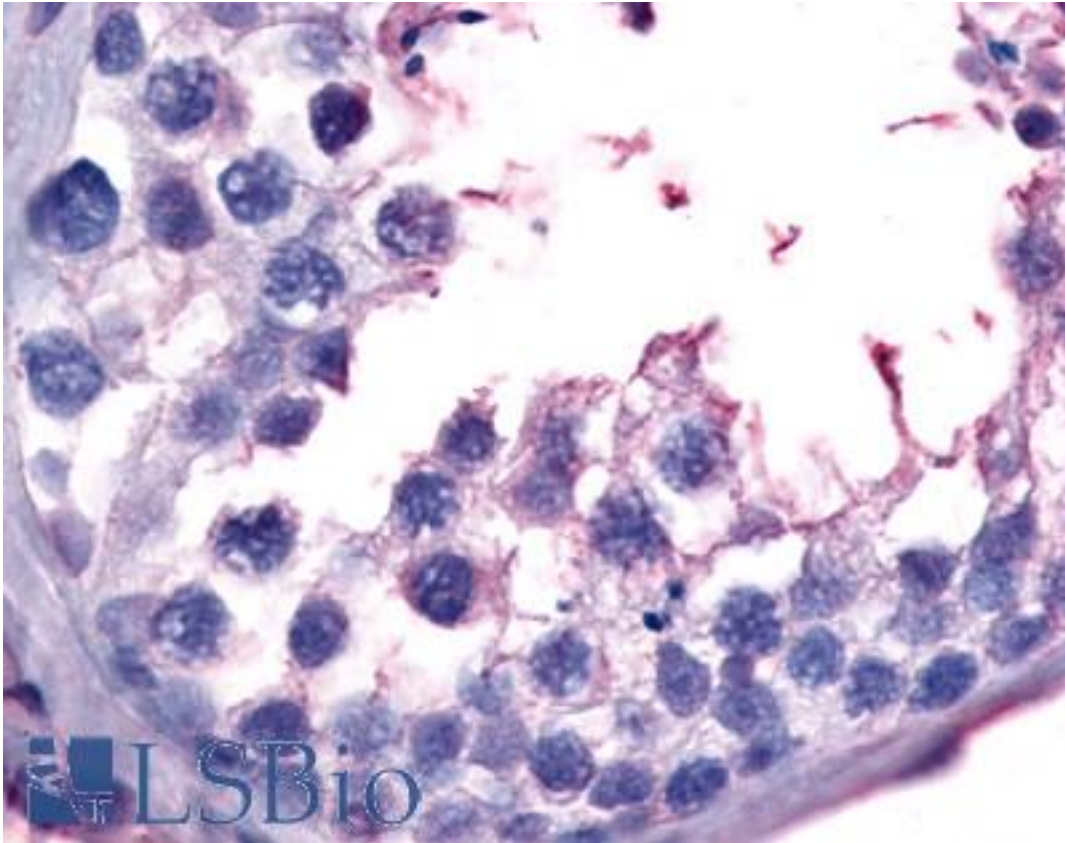


| GPR149 / PGR10 Rabbit anti-Human Polyclonal (C-Terminus) Antibody - LS-A5100 - LSBio | |
|--|---|
| CatalogID: | LS-A5100 |
| Target: | G protein-coupled receptor 149 (GPR149) |
| Synonyms: | GPR149 Antibody, PGR10 Antibody, G protein-coupled receptor 149 Antibody, IEDA Antibody |
| Family / Subfamily: | GPCR / Orphan-U |
| Host | GPR149 antibody was produced in Rabbit |
| Clonality: | Polyclonal |
| Immunogen Species: | GPR149 / PGR10 antibody was raised against Human |
| Antigen Type: | Synthetic peptide |
| Immunogen: | GPR149 / PGR10 antibody was raised against synthetic 16 amino acid peptide from C-terminus of human GPR149. Percent identity with other species by BLAST analysis: Human, Gorilla (100%); Gibbon, Rabbit (94%); Marmoset (81%). |
| Specificity: | Human GPR149. BLAST analysis of the peptide immunogen showed no homology with other human proteins. |
| Epitope: | C-Terminus |
| Reactivity: | Human, Gorilla |
| Predicted Reactivity: | Gibbon, Rabbit |
| Purification: | Immunoaffinity purified |
| Presentation: | PBS, 0.1% sodium azide. |
| Recommended Storage: | Long term: -70°C; Short term: +4°C |
| Uses: | IHC - Paraffin (6 µg/ml) (Optimal dilution to be determined by the researcher) |
| Size: | 50 µg |
| Concentration: | 1 mg/ml |

Immunohistochemistry Image:



Anti-GPR149 antibody LS-A5100 IHC of human testis, spermatocytic precursors.
Immunohistochemistry of formalin-fixed, paraffin-embedded tissue after heat-induced antigen retrieval.

Requested From:

Japan

Laboratory Reagent For In Vitro Research Use Only

Not for resale without prior written consent from LifeSpan BioSciences, Inc.

Created on 9/23/2014

© 2014 LifeSpan BioSciences