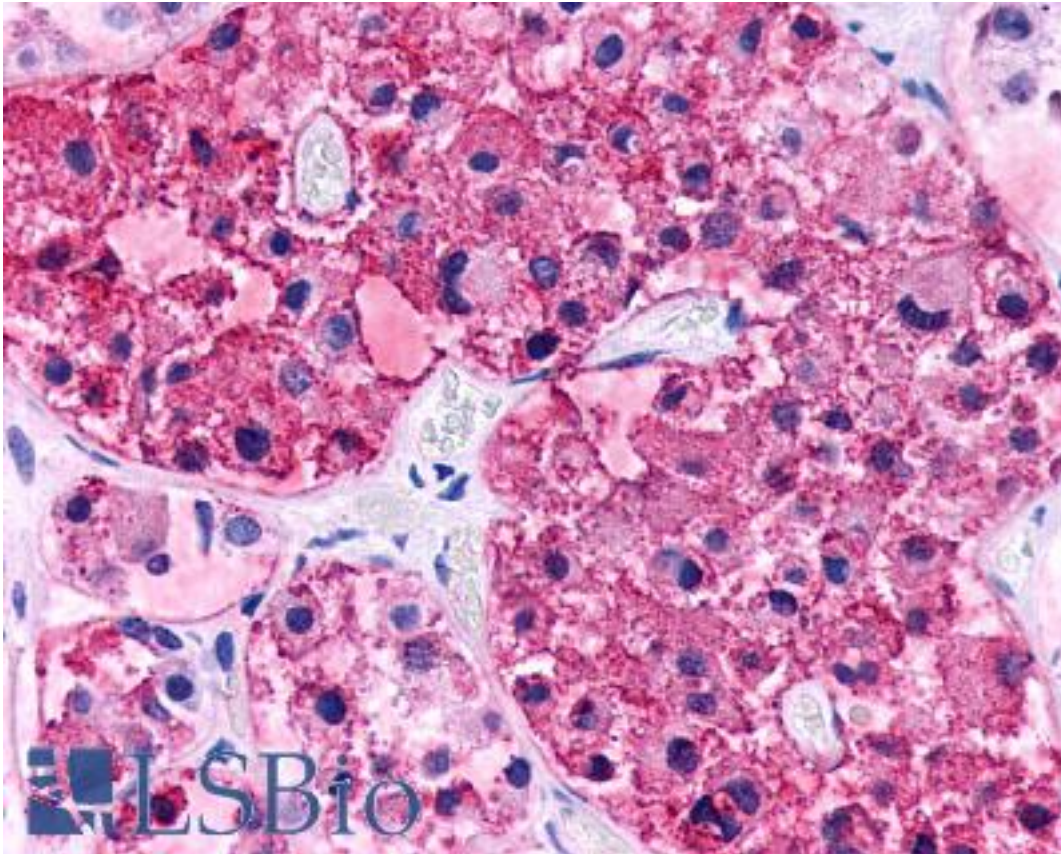


CRHR2 / CRF2 Receptor Rabbit anti-Human Polyclonal (N-Terminus) Antibody - LS-A505 - LSBio	
CatalogID:	LS-A505
Target:	corticotropin releasing hormone receptor 2 (CRHR2)
Synonyms:	CRHR2 Antibody, CRF-R-2 Antibody, CRF-R2 Antibody, CRF2R Antibody, Crh2 receptor Antibody, CRF2 receptor, beta isoform Antibody, CRFR2 Antibody, CRFR-2 Antibody, CRH-R-2 Antibody, CRH2R Antibody, CRF-RB Antibody, CRF2 Antibody, CRH-R2 Antibody, HM-CRF Antibody
Family / Subfamily:	GPCR / Corticotropin releasing factor
Host	CRHR2 antibody was produced in Rabbit
Clonality:	Polyclonal
Immunogen Species:	CRHR2 / CRF2 Receptor antibody was raised against Human
Antigen Type:	Synthetic peptide
Immunogen:	CRHR2 / CRF2 Receptor antibody was raised against synthetic 20 amino acid peptide from N-terminal extracellular domain of human CRHR2. Percent identity with other species by BLAST analysis: Human, Gorilla, Gibbon, Monkey, Marmoset, Rat, Horse (100%); Mouse, Bovine, Rabbit (95%); Dog, Pig (90%); Panda, Bat (85%).
Specificity:	Human CRHR2. BLAST analysis of the peptide immunogen showed no homology with other human proteins, except CRHR1 (40%).
Epitope:	N-Terminus
Reactivity:	Human, Gorilla, Gibbon, Monkey, Rat, Horse
Predicted Reactivity:	Mouse, Bovine, Dog, Pig, Rabbit
Purification:	Immunoaffinity purified
Presentation:	PBS, 0.1% sodium azide.
Recommended Storage:	Long term: -70°C; Short term: +4°C
Uses:	IHC - Paraffin (6 µg/ml) (Optimal dilution to be determined by the researcher)
Size:	50 µg
Concentration:	1 mg/ml

Immunohistochemistry Image:



Anti-CRHR2 antibody LS-A505 IHC of human brain, pituitary. Immunohistochemistry of formalin-fixed, paraffin-embedded tissue after heat-induced antigen retrieval.

Requested From:

Japan

Laboratory Reagent For In Vitro Research Use Only

Not for resale without prior written consent from LifeSpan BioSciences, Inc.

Created on 9/23/2014

© 2014 LifeSpan BioSciences