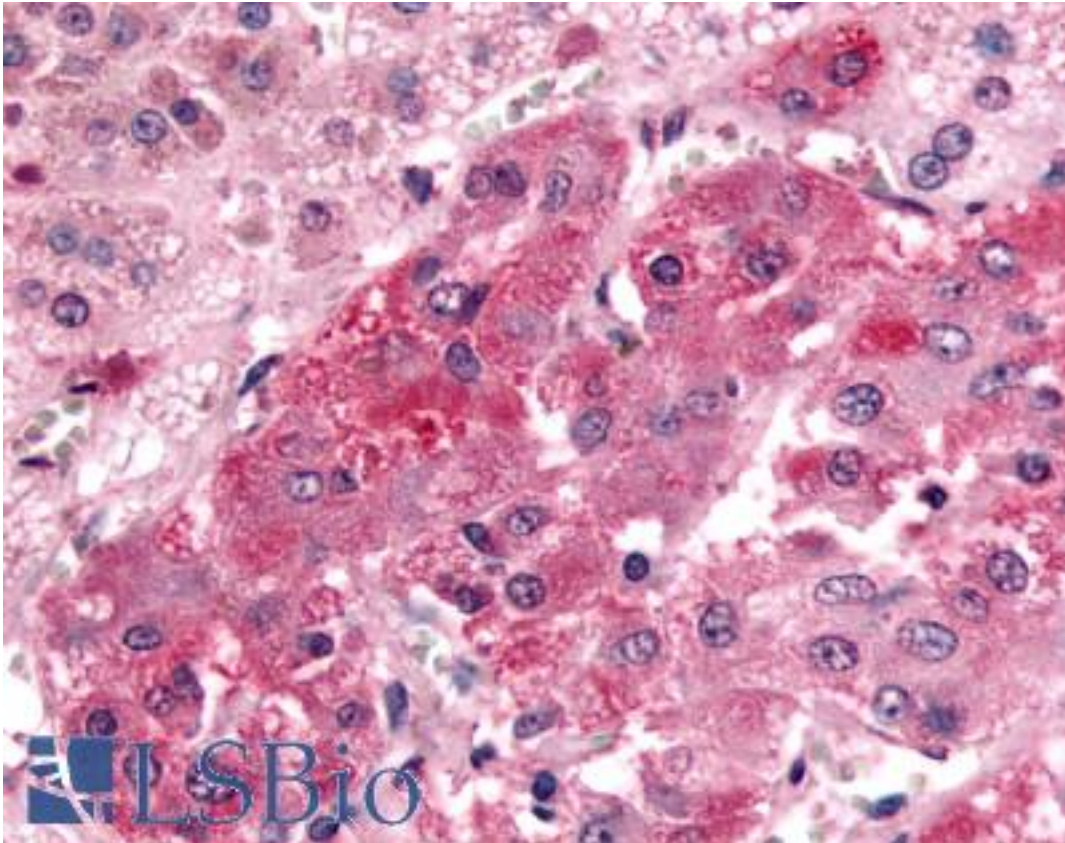


GPR108 Rabbit anti-Human Polyclonal (Cytoplasmic Domain) Antibody - LS-A4946 - LSBio	
CatalogID:	LS-A4946
Target:	G protein-coupled receptor 108 (GPR108)
Synonyms:	GPR108 Antibody, G protein-coupled receptor 108 Antibody, LUSTR2 Antibody, Protein GPR108 Antibody
Family / Subfamily:	GPCR / Orphan-U
Host	GPR108 antibody was produced in Rabbit
Clonality:	Polyclonal
Immunogen Species:	GPR108 antibody was raised against Human
Antigen Type:	Synthetic peptide
Immunogen:	GPR108 antibody was raised against synthetic 18 amino acid peptide from 1st cytoplasmic domain of human GPR108. Percent identity with other species by BLAST analysis: Human (100%); Gorilla, Monkey, Marmoset, Pig (94%); Mouse, Rat, Bovine, Horse (89%); Panda (83%).
Specificity:	Human GPR108. BLAST analysis of the peptide immunogen showed no homology with other human proteins.
Epitope:	Cytoplasmic Domain
Reactivity:	Human
Predicted Reactivity:	Gorilla, Monkey, Pig
Purification:	Immunoaffinity purified
Presentation:	PBS, 0.1% sodium azide.
Recommended Storage:	Long term: -70°C; Short term: +4°C
Uses:	IHC - Paraffin (20 µg/ml) (Optimal dilution to be determined by the researcher)
Size:	50 µg
Concentration:	1 mg/ml

Immunohistochemistry Image:



Anti-GPR108 antibody LS-A4946 IHC of human adrenal, medulla. Immunohistochemistry of formalin-fixed, paraffin-embedded tissue after heat-induced antigen retrieval.

Requested From:

Japan

Laboratory Reagent For In Vitro Research Use Only

Not for resale without prior written consent from LifeSpan BioSciences, Inc.

Created on 9/23/2014

© 2014 LifeSpan BioSciences