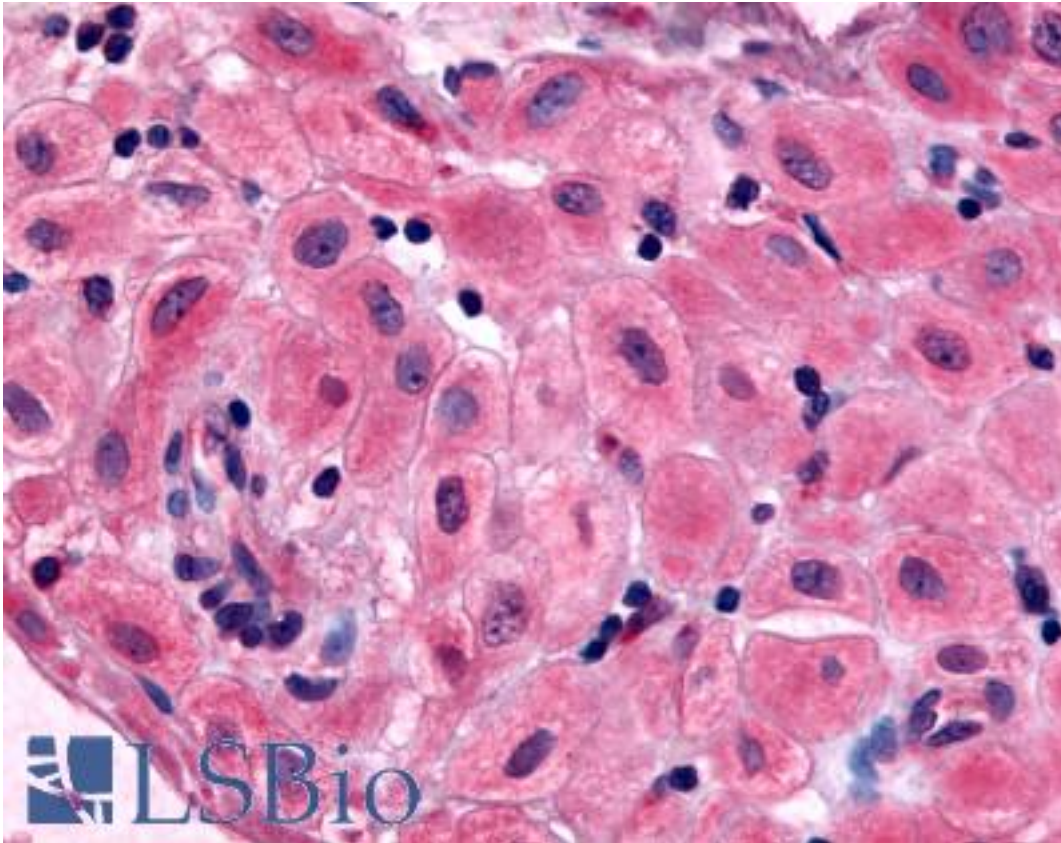


BRS3 / BRS-3 Rabbit anti-Human Polyclonal (Extracellular Domain) Antibody - LS-A4920 - LSBio	
<b>CatalogID:</b>	LS-A4920
<b>Target:</b>	bombesin-like receptor 3 (BRS3)
<b>Synonyms:</b>	BRS3 Antibody, BB3 receptor Antibody, Bombesin-like receptor 3 Antibody, Bombesin receptor subtype 3 Antibody, Bombesin receptor subtype-3 Antibody, BRS-3 Antibody, BLP receptor subtype 3 Antibody, Bombesin receptor 3 Antibody
<b>Family / Subfamily:</b>	GPCR / Orphan-A
<b>Host</b>	BRS3 antibody was produced in Rabbit
<b>Clonality:</b>	Polyclonal
<b>Immunogen Species:</b>	BRS3 / BRS-3 antibody was raised against Human
<b>Antigen Type:</b>	Synthetic peptide
<b>Immunogen:</b>	BRS3 / BRS-3 antibody was raised against synthetic 15 amino acid peptide from 2nd extracellular domain of human BRS3. Percent identity with other species by BLAST analysis: Human, Gorilla, Gibbon, Marmoset, Bat (100%); Monkey, Hamster, Rabbit (87%); Mouse, Rat (80%).
<b>Specificity:</b>	Human BRS3. BLAST analysis of the peptide immunogen showed no homology with other human proteins.
<b>Epitope:</b>	Extracellular Domain
<b>Reactivity:</b>	Human, Gorilla, Gibbon, Monkey, Bat
<b>Purification:</b>	Immunoaffinity purified
<b>Presentation:</b>	PBS, 0.1% sodium azide.
<b>Recommended Storage:</b>	Long term: -70°C; Short term: +4°C
<b>Uses:</b>	IHC - Paraffin (2.5 µg/ml) (Optimal dilution to be determined by the researcher)
<b>Size:</b>	50 µg
<b>Concentration:</b>	1 mg/ml

**Immunohistochemistry Image:**



Anti-BRS3 antibody LS-A4920 IHC of human uterus, pregnant. Immunohistochemistry of formalin-fixed, paraffin-embedded tissue after heat-induced antigen retrieval.

**Requested From:**

Japan

Laboratory Reagent For In Vitro Research Use Only

Not for resale without prior written consent from LifeSpan BioSciences, Inc.

Created on 9/23/2014

© 2014 LifeSpan BioSciences