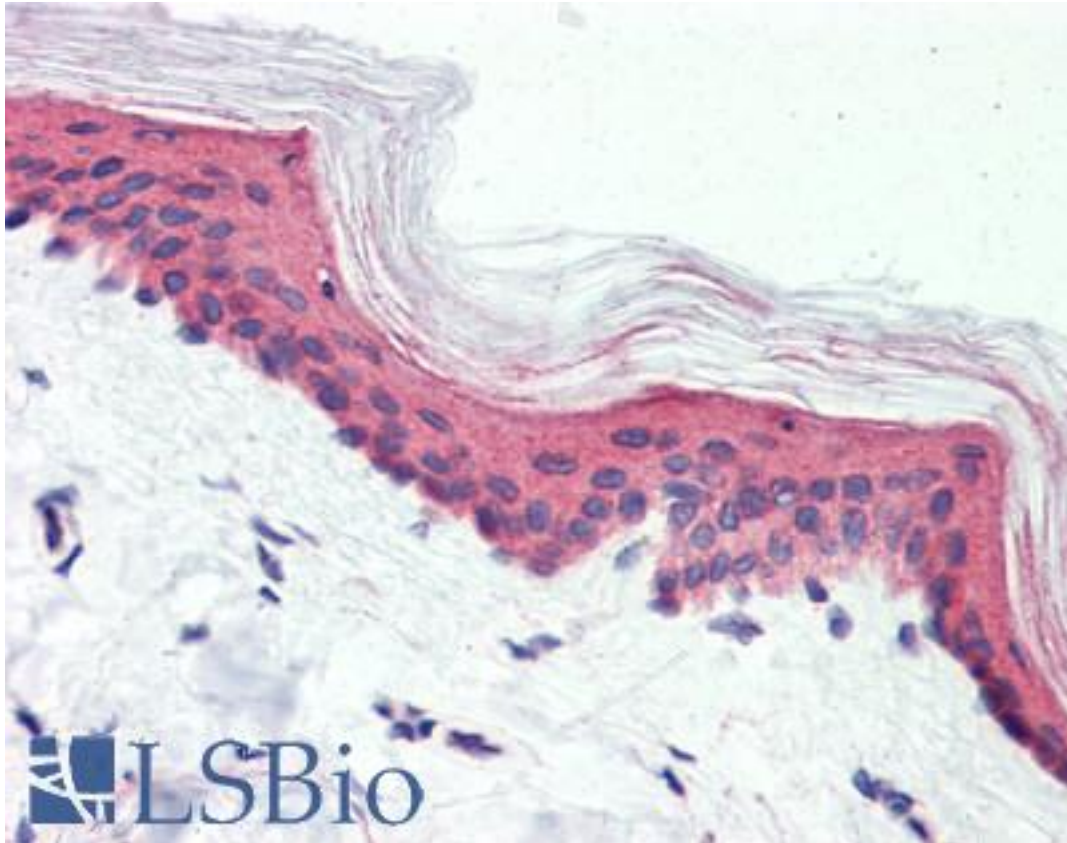


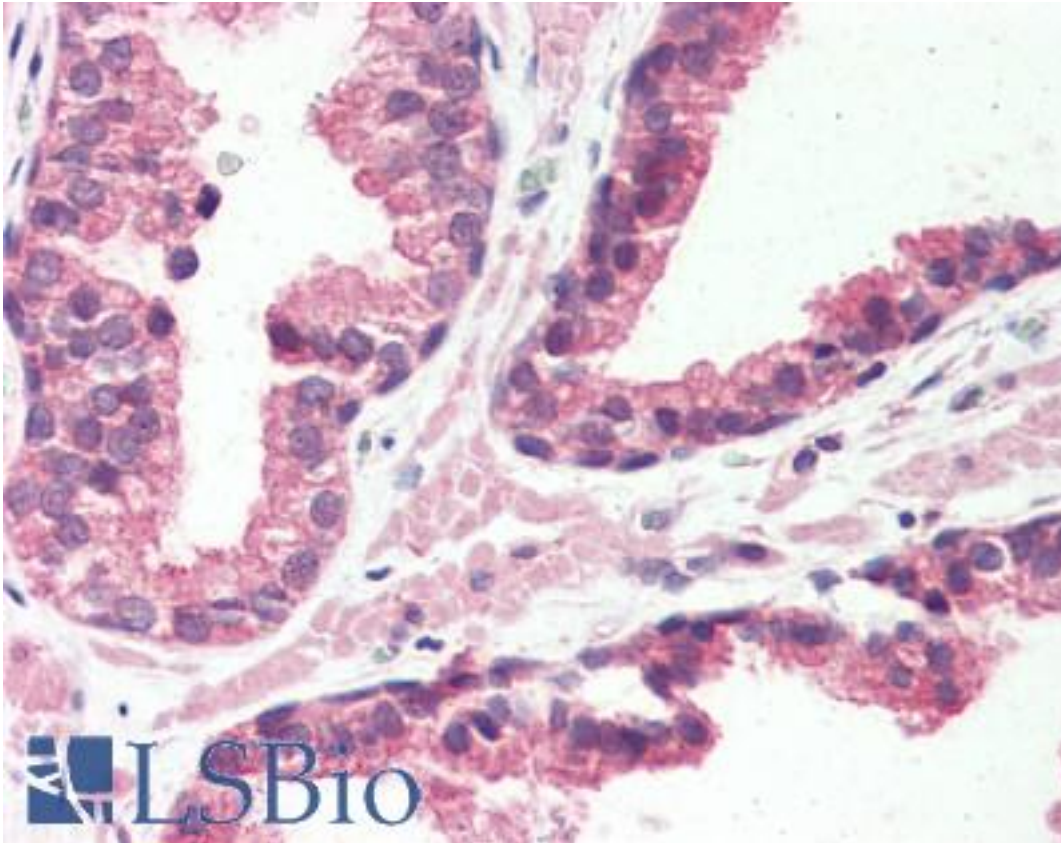
DREG / GPR126 Rabbit anti-Human Polyclonal (N-Terminus) Antibody - LS-A4882 - LSBio	
<b>CatalogID:</b>	LS-A4882
<b>Target:</b>	G protein-coupled receptor 126 (GPR126)
<b>Synonyms:</b>	GPR126 Antibody, APG1 Antibody, G-protein coupled receptor 126 Antibody, PS1TP2 Antibody, VIGR Antibody, DREG Antibody, G protein-coupled receptor 126 Antibody
<b>Family / Subfamily:</b>	GPCR / Orphan-B
<b>Host</b>	GPR126 antibody was produced in Rabbit
<b>Clonality:</b>	Polyclonal
<b>Immunogen Species:</b>	DREG / GPR126 antibody was raised against Human
<b>Antigen Type:</b>	Synthetic peptide
<b>Immunogen:</b>	DREG / GPR126 antibody was raised against synthetic 18 amino acid peptide from N-terminal extracellular domain of human GPR126. Percent identity with other species by BLAST analysis: Gorilla, Gibbon, Monkey, Marmoset, Mouse, Rat, Hamster, Elephant, Panda, Bovine, Dog, Bat, Horse, Rabbit, Opossum, Turkey, Chicken (100%); Human, Lizard (94%); Xenopus, Stickleback, Pufferfish, Zebrafish (83%).
<b>Specificity:</b>	Human GPR126. BLAST analysis of the peptide immunogen showed no homology with other human proteins, except GPR64 (72%).
<b>Epitope:</b>	N-Terminus
<b>Reactivity:</b>	Human, Gorilla, Gibbon, Monkey, Mouse, Rat, Bat, Bovine, Dog, Hamster, Horse, Rabbit, Chicken
<b>Purification:</b>	Immunoaffinity purified
<b>Presentation:</b>	PBS, 0.1% sodium azide.
<b>Recommended Storage:</b>	Long term: -70°C; Short term: +4°C
<b>Usage Summary:</b>	Proteinase K treatment is required for antigen retrieval.
<b>Uses:</b>	IHC - Paraffin (10 µg/ml) (Optimal dilution to be determined by the researcher)
<b>Size:</b>	50 µg
<b>Concentration:</b>	1 mg/ml

**Immunohistochemistry Image:**



Anti-GPR126 antibody LS-A4882 IHC of human skin. Immunohistochemistry of formalin-fixed, paraffin-embedded tissue after heat-induced antigen retrieval.

**Immunohistochemistry Image:**



Anti-GPR126 antibody LS-A4882 IHC of human prostate. Immunohistochemistry of formalin-fixed, paraffin-embedded tissue after heat-induced antigen retrieval.

**Requested From:**

Japan

Laboratory Reagent For In Vitro Research Use Only

Not for resale without prior written consent from LifeSpan BioSciences, Inc.

Created on 9/23/2014

© 2014 LifeSpan BioSciences