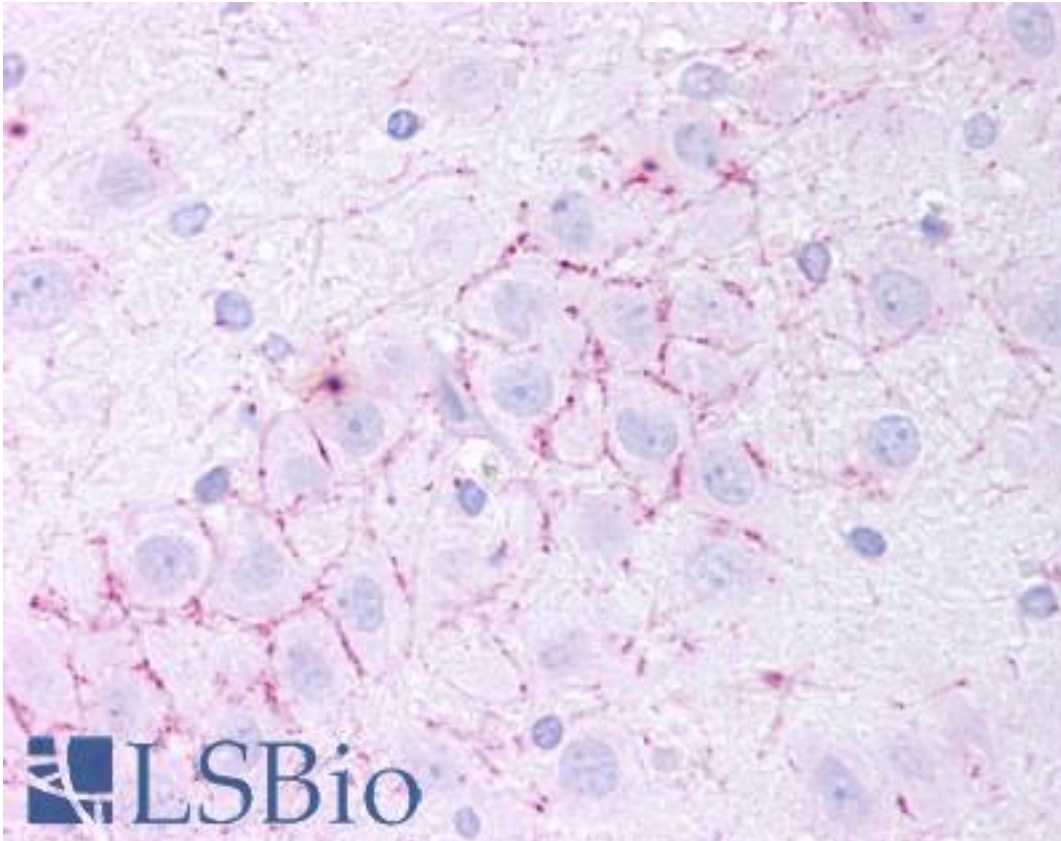


TAAR5 Rabbit anti-Human Polyclonal (N-Terminus) Antibody - LS-A485 - LSBio

CatalogID:	LS-A485
Target:	trace amine associated receptor 5 (TAAR5)
Synonyms:	TAAR5 Antibody, PNR Antibody, RP11-295F4.5 Antibody, Trace amine receptor 5 Antibody, TaR-5 Antibody
Family / Subfamily:	GPCR / Trace Amine Associated Receptor
Host	TAAR5 antibody was produced in Rabbit
Clonality:	Polyclonal
Immunogen Species:	TAAR5 antibody was raised against Human
Antigen Type:	Synthetic peptide
Immunogen:	TAAR5 antibody was raised against synthetic 15 amino acid peptide from N-terminal extracellular domain of human TAAR5. Percent identity with other species by BLAST analysis: Human, Chimpanzee, Gorilla, Gibbon, Baboon, Marmoset, Tamarin, Rabbit (100%); Orangutan, Monkey, Rat, Horse (93%); Mouse, Bat, Hamster, Panda, Pig (87%); Bovine, Dog, Elephant (80%).
Specificity:	Human TAAR5. BLAST analysis of the peptide immunogen showed no homology with other human proteins.
Epitope:	N-Terminus
Reactivity:	Human, Chimpanzee, Gorilla, Gibbon, Rabbit
Predicted Reactivity:	Orangutan, Monkey, Rat, Horse
Purification:	Immunoaffinity purified
Presentation:	PBS, 0.1% sodium azide.
Recommended Storage:	Long term: -70°C; Short term: +4°C
Usage Summary:	Immunohistochemistry: LS-A485 was validated for use in immunohistochemistry on a panel of 21 formalin-fixed, paraffin-embedded (FFPE) human tissues after heat induced antigen retrieval in pH 6.0 citrate buffer. After incubation with the primary antibody, slides were incubated with biotinylated secondary antibody, followed by alkaline phosphatase-streptavidin and chromogen. The stained slides were evaluated by a pathologist to confirm staining specificity. The optimal working concentration for LS-A485 was determined to be 20 ug/ml.
Uses:	IHC - Paraffin (20 µg/ml), ELISA (Optimal dilution to be determined by the researcher)
Size:	50 µg
Concentration:	1 mg/ml

Immunohistochemistry Image:



Anti-TAAR5 antibody LS-A485 IHC of human dentate gyrus. Immunohistochemistry of formalin-fixed, paraffin-embedded tissue after heat-induced antigen retrieval.

Requested From:

Japan

Laboratory Reagent For In Vitro Research Use Only

Not for resale without prior written consent from LifeSpan BioSciences, Inc.

Created on 9/23/2014

© 2014 LifeSpan BioSciences