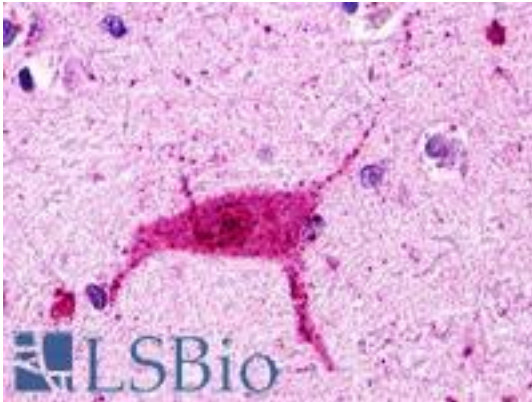
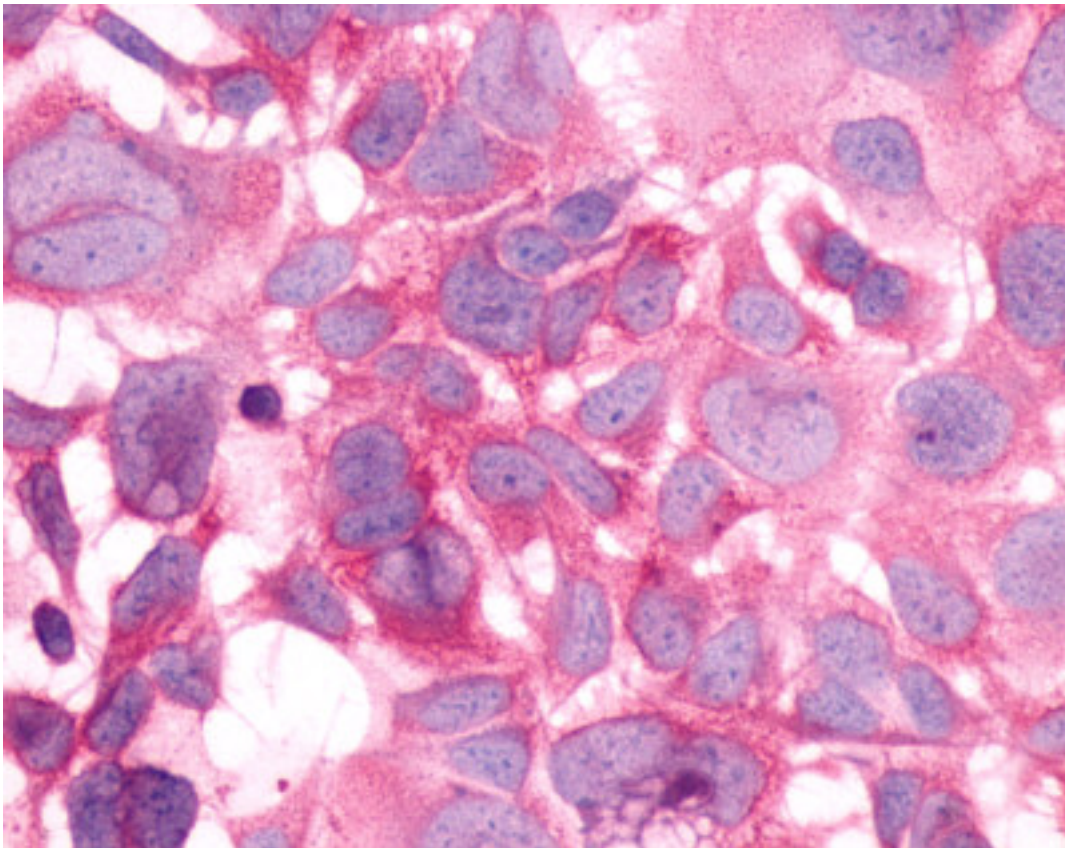


HRH3 / Histamine 3 Receptor Rabbit anti-Human Polyclonal (Cytoplasmic Domain) Antibody - LS-A476 - LSBio	
<b>CatalogID:</b>	LS-A476
<b>Target:</b>	histamine receptor H3 (HRH3)
<b>Synonyms:</b>	HRH3 Antibody, G protein-coupled receptor 97 Antibody, GPCR97 Antibody, H3 histamine receptor Antibody, H3R Antibody, HH3R Antibody, Histamine H3 receptor Antibody, Histamine receptor H3 Antibody, G-protein coupled receptor 97 Antibody, Histamine 3 receptor Antibody
<b>Family / Subfamily:</b>	GPCR / Histamine
<b>Host</b>	HRH3 antibody was produced in Rabbit
<b>Clonality:</b>	Polyclonal
<b>Immunogen Species:</b>	HRH3 / Histamine 3 Receptor antibody was raised against Human
<b>Antigen Type:</b>	Synthetic peptide
<b>Immunogen:</b>	HRH3 / Histamine 3 Receptor antibody was raised against synthetic 16 amino acid peptide from 3rd cytoplasmic domain of human HRH3 / Histamine H3 Receptor. Percent identity with other species by BLAST analysis: Human, Gorilla, Gibbon, Monkey (100%); Mouse, Rat, Hamster, Elephant, Bovine, Dog, Horse, Opossum, Guinea pig, Platypus (88%); Bat, Turkey (81%).
<b>Specificity:</b>	Human HRH3 / Histamine H3 Receptor. BLAST analysis of the peptide immunogen showed no homology with other human proteins.
<b>Epitope:</b>	Cytoplasmic Domain
<b>Reactivity:</b>	Human, Gorilla, Gibbon, Monkey
<b>Purification:</b>	Immunoaffinity purified
<b>Presentation:</b>	PBS, 0.1% sodium azide.
<b>Recommended Storage:</b>	Long term: -70°C; Short term: +4°C
<b>Uses:</b>	IHC - Paraffin (18 - 36 µg/ml), ICC (Optimal dilution to be determined by the researcher)
<b>Size:</b>	50 µg
<b>Concentration:</b>	1 mg/ml

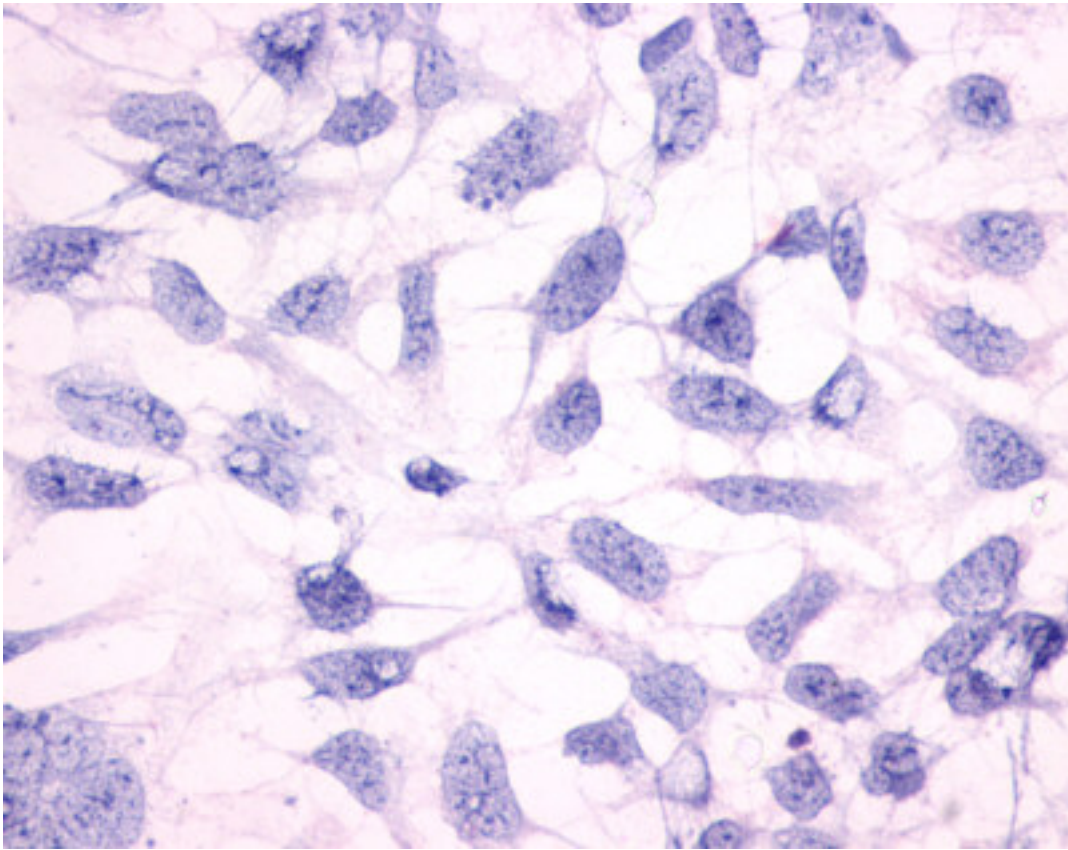
**Immunohistochemistry Image:**



Anti-HRH3 / Histamine H3 Receptor antibody LS-A476 IHC of human brain, neurons and glia. Immunohistochemistry of formalin-fixed, paraffin-embedded tissue after heat-induced antigen retrieval.



Cells expressing vector only - immunostained with target antibody



Cells expressing vector only - immunostained with target antibody

**Requested From:**

Japan

Laboratory Reagent For In Vitro Research Use Only

Not for resale without prior written consent from LifeSpan BioSciences, Inc.

Created on 9/23/2014

© 2014 LifeSpan BioSciences