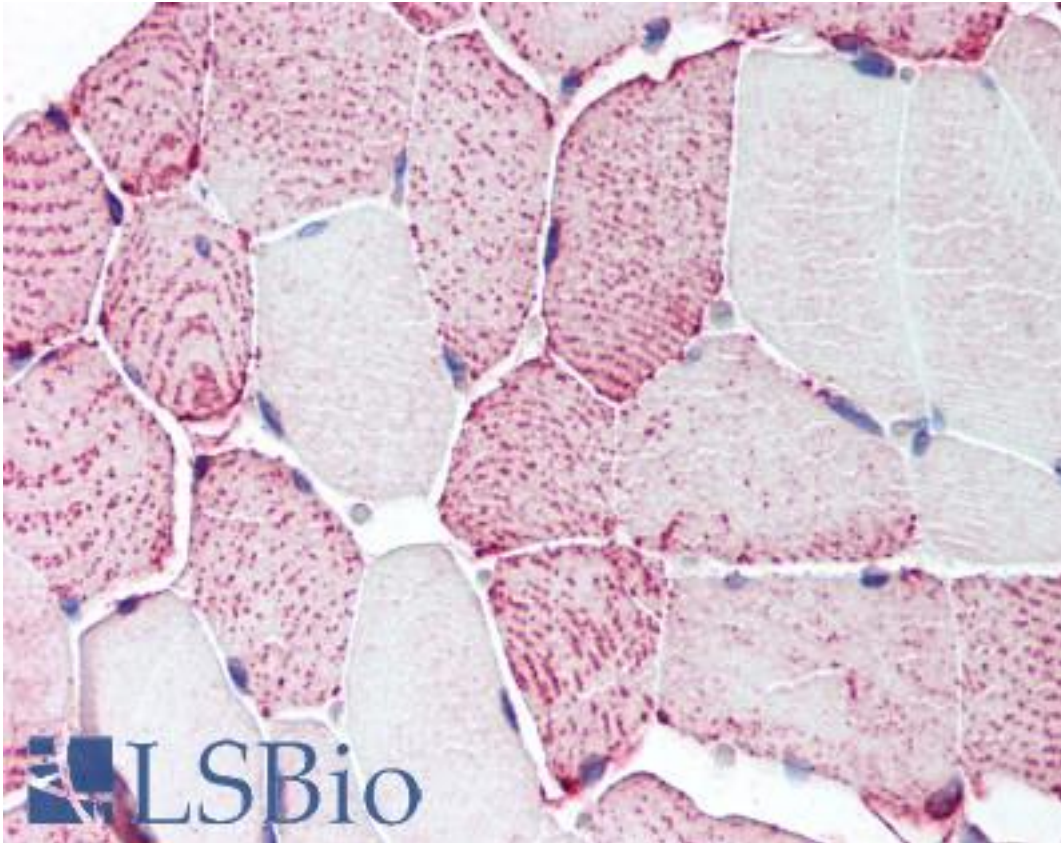


| RXFP2 / LGR8 Rabbit anti-Human Polyclonal (Cytoplasmic Domain) Antibody - LS-A4754 - LSBio | |
|--|--|
| CatalogID: | LS-A4754 |
| Target: | relaxin/insulin-like family peptide receptor 2 (RXFP2) |
| Synonyms: | RXFP2 Antibody, G-protein coupled receptor 106 Antibody, GPR106 Antibody, INSL3R Antibody, LGR8 Antibody, GREAT Antibody, Relaxin receptor 2 Antibody, LGR8.1 Antibody, RXFPR2 Antibody |
| Family / Subfamily: | GPCR / Relaxin |
| Host | RXFP2 antibody was produced in Rabbit |
| Clonality: | Polyclonal |
| Immunogen Species: | RXFP2 / LGR8 antibody was raised against Human |
| Antigen Type: | Synthetic peptide |
| Immunogen: | RXFP2 / LGR8 antibody was raised against synthetic 14 amino acid peptide from 3rd cytoplasmic domain of human RXFP2. Percent identity with other species by BLAST analysis: Human, Gorilla (100%); Gibbon, Monkey (93%). |
| Specificity: | Human RXFP2. BLAST analysis of the peptide immunogen showed no homology with other human proteins. |
| Epitope: | Cytoplasmic Domain |
| Reactivity: | Human, Gorilla |
| Predicted Reactivity: | Gibbon, Monkey |
| Purification: | Immunoaffinity purified |
| Presentation: | PBS, 0.1% sodium azide. |
| Recommended Storage: | Long term: -70°C; Short term: +4°C |
| Uses: | IHC - Paraffin (7 µg/ml) (Optimal dilution to be determined by the researcher) |
| Size: | 50 µg |
| Concentration: | 1 mg/ml |

Immunohistochemistry Image:



Anti-RXFP2 antibody LS-A4754 IHC of human skeletal muscle. Immunohistochemistry of formalin-fixed, paraffin-embedded tissue after heat-induced antigen retrieval.

Requested From:

Japan

Laboratory Reagent For In Vitro Research Use Only

Not for resale without prior written consent from LifeSpan BioSciences, Inc.

Created on 9/23/2014

© 2014 LifeSpan BioSciences