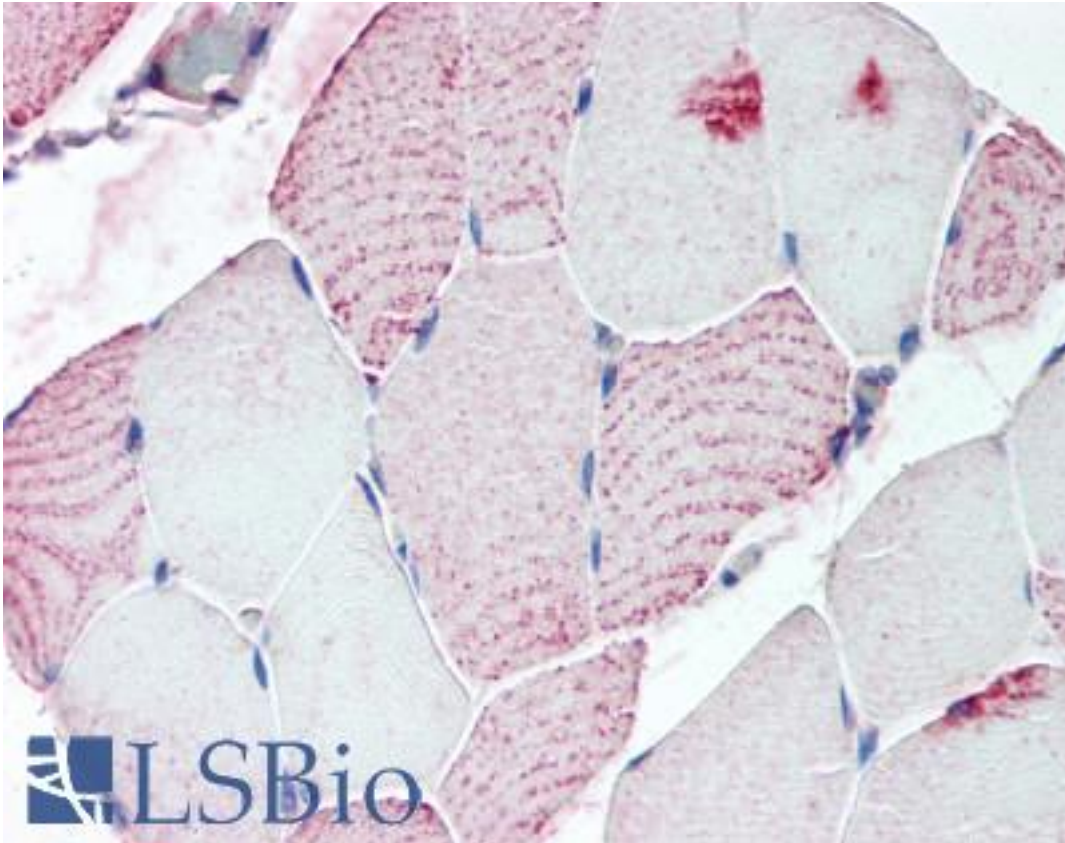


RXFP2 / LGR8 Rabbit anti-Human Polyclonal (C-Terminus) Antibody - LS-A4752 - LSBio

CatalogID:	LS-A4752
Target:	relaxin/insulin-like family peptide receptor 2 (RXFP2)
Synonyms:	RXFP2 Antibody, G-protein coupled receptor 106 Antibody, GPR106 Antibody, INSL3R Antibody, LGR8 Antibody, GREAT Antibody, Relaxin receptor 2 Antibody, LGR8.1 Antibody, RXFPR2 Antibody
Family / Subfamily:	GPCR / Relaxin
Host	RXFP2 antibody was produced in Rabbit
Clonality:	Polyclonal
Immunogen Species:	RXFP2 / LGR8 antibody was raised against Human
Antigen Type:	Synthetic peptide
Immunogen:	RXFP2 / LGR8 antibody was raised against synthetic 18 amino acid peptide from C-terminus of human RXFP2. Percent identity with other species by BLAST analysis: Human, Gorilla (100%); Gibbon, Rabbit (94%); Monkey, Rat, Panda, Bovine, Dog, Horse (89%); Mouse (83%).
Specificity:	Human RXFP2. BLAST analysis of the peptide immunogen showed no homology with other human proteins, except DSEL (39%).
Epitope:	C-Terminus
Reactivity:	Human, Gorilla
Predicted Reactivity:	Gibbon, Rabbit
Purification:	Immunoaffinity purified
Presentation:	PBS, 0.1% sodium azide.
Recommended Storage:	Long term: -70°C; Short term: +4°C
Uses:	IHC - Paraffin (18 µg/ml) (Optimal dilution to be determined by the researcher)
Size:	50 µg
Concentration:	1 mg/ml

Immunohistochemistry Image:



Anti-RXFP2 antibody LS-A4752 IHC of human skeletal muscle. Immunohistochemistry of formalin-fixed, paraffin-embedded tissue after heat-induced antigen retrieval.

Requested From:

Japan

Laboratory Reagent For In Vitro Research Use Only

Not for resale without prior written consent from LifeSpan BioSciences, Inc.

Created on 9/23/2014

© 2014 LifeSpan BioSciences