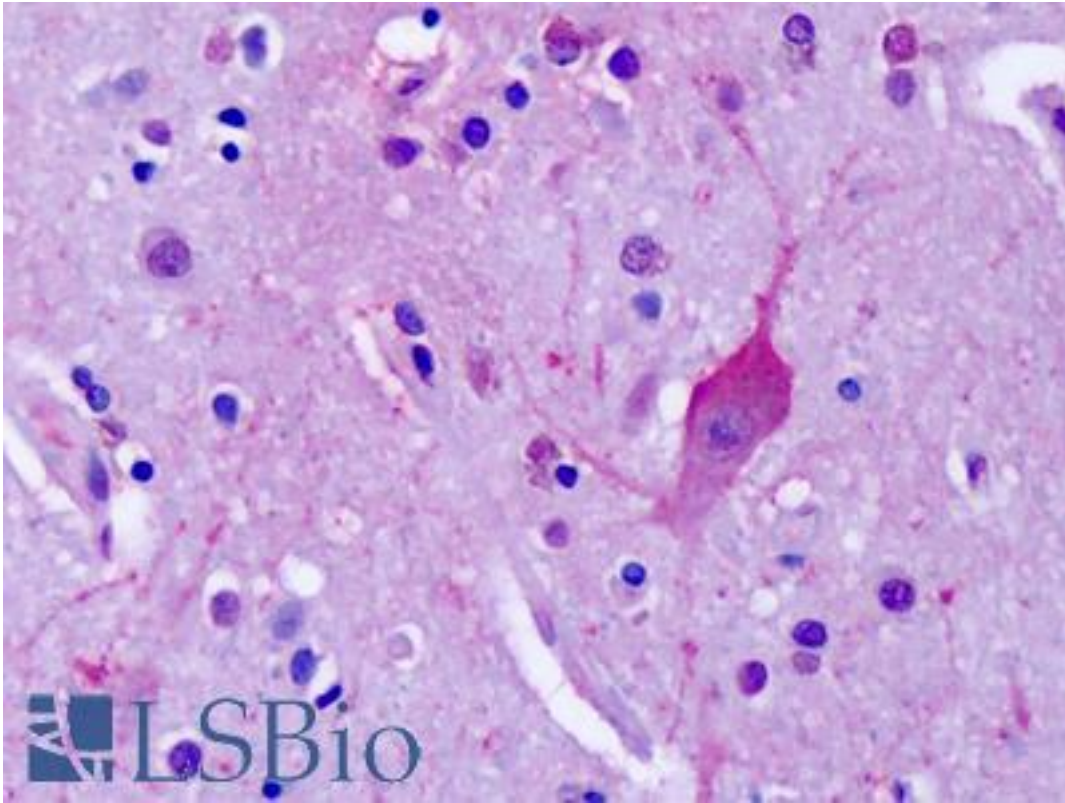


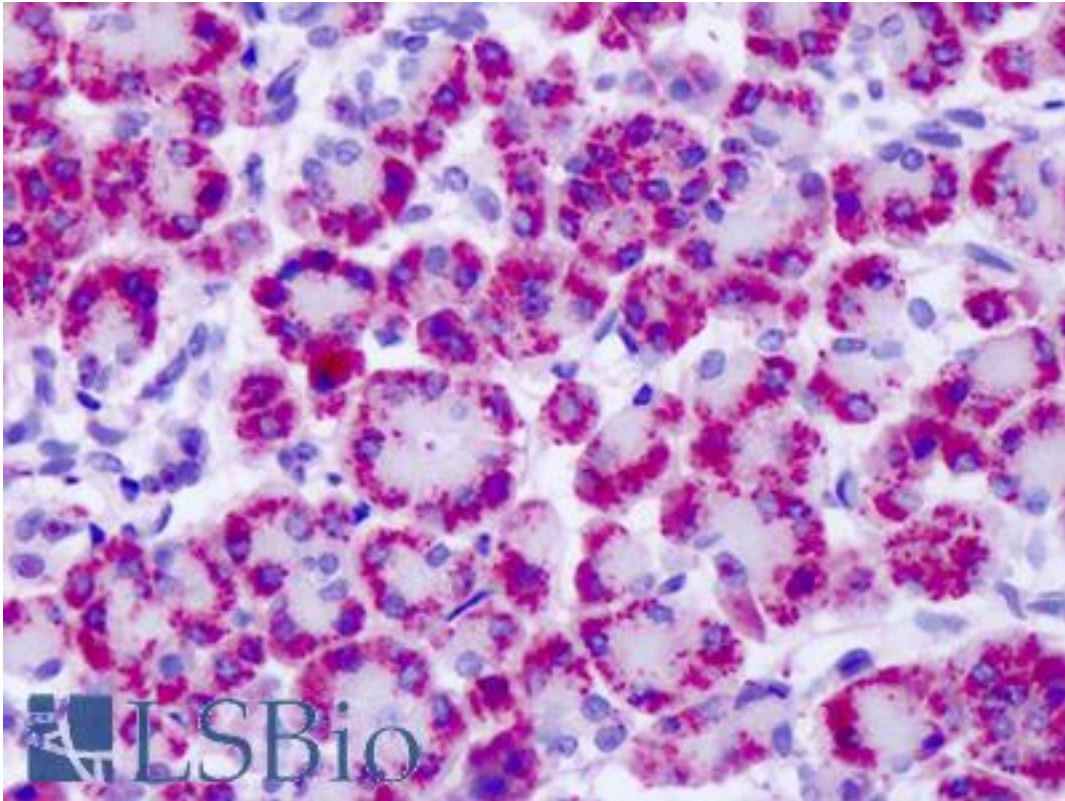
GRM4 / MGLUR4 Rabbit anti-Human Polyclonal (C-Terminus) Antibody - LS-A4713 - LSBio	
CatalogID:	LS-A4713
Target:	glutamate receptor, metabotropic 4 (GRM4)
Synonyms:	GRM4 Antibody, GPRC1D Antibody, MGLu4 Antibody, MGLUR4 Antibody
Family / Subfamily:	GPCR / Metabotropic glutamate
Host	GRM4 antibody was produced in Rabbit
Clonality:	Polyclonal
Immunogen Species:	GRM4 / MGLUR4 antibody was raised against Human
Antigen Type:	Synthetic peptide
Immunogen:	GRM4 / MGLUR4 antibody was raised against synthetic 16 amino acid peptide from C-terminus of human GRM4 / MGLUR4. Percent identity with other species by BLAST analysis: Human, Chimpanzee, Gorilla, Gibbon, Monkey, Mouse, Rabbit, Pig (100%); Rat, Hamster, Dog (94%); Horse, Opossum (88%); Turkey, Chicken (81%).
Specificity:	Human GRM4 / MGLUR4. BLAST analysis of the peptide immunogen showed no homology with other human proteins.
Epitope:	C-Terminus
Reactivity:	Human, Chimpanzee, Gorilla, Gibbon, Monkey, Mouse, Pig, Rabbit
Predicted Reactivity:	Rat, Dog, Hamster
Purification:	Immunoaffinity purified
Presentation:	PBS, 0.1% sodium azide.
Recommended Storage:	Long term: -70°C; Short term: +4°C
Uses:	IHC - Paraffin (19 µg/ml), Western blot (Optimal dilution to be determined by the researcher)
Size:	50 µg
Concentration:	1 mg/ml

Immunohistochemistry Image:



Anti-MGLUR4 antibody IHC of human brain, cortex, neurons. Immunohistochemistry of formalin-fixed, paraffin-embedded tissue after heat-induced antigen retrieval. Antibody LS-A4713 dilution 19 ug/ml.

Immunohistochemistry Image:



Anti-MGLUR4 antibody IHC of human pancreas. Immunohistochemistry of formalin-fixed, paraffin-embedded tissue after heat-induced antigen retrieval. Antibody LS-A4713 dilution 19 ug/ml.

Requested From:

Japan

Laboratory Reagent For In Vitro Research Use Only

Not for resale without prior written consent from LifeSpan BioSciences, Inc.

Created on 9/23/2014

© 2014 LifeSpan BioSciences