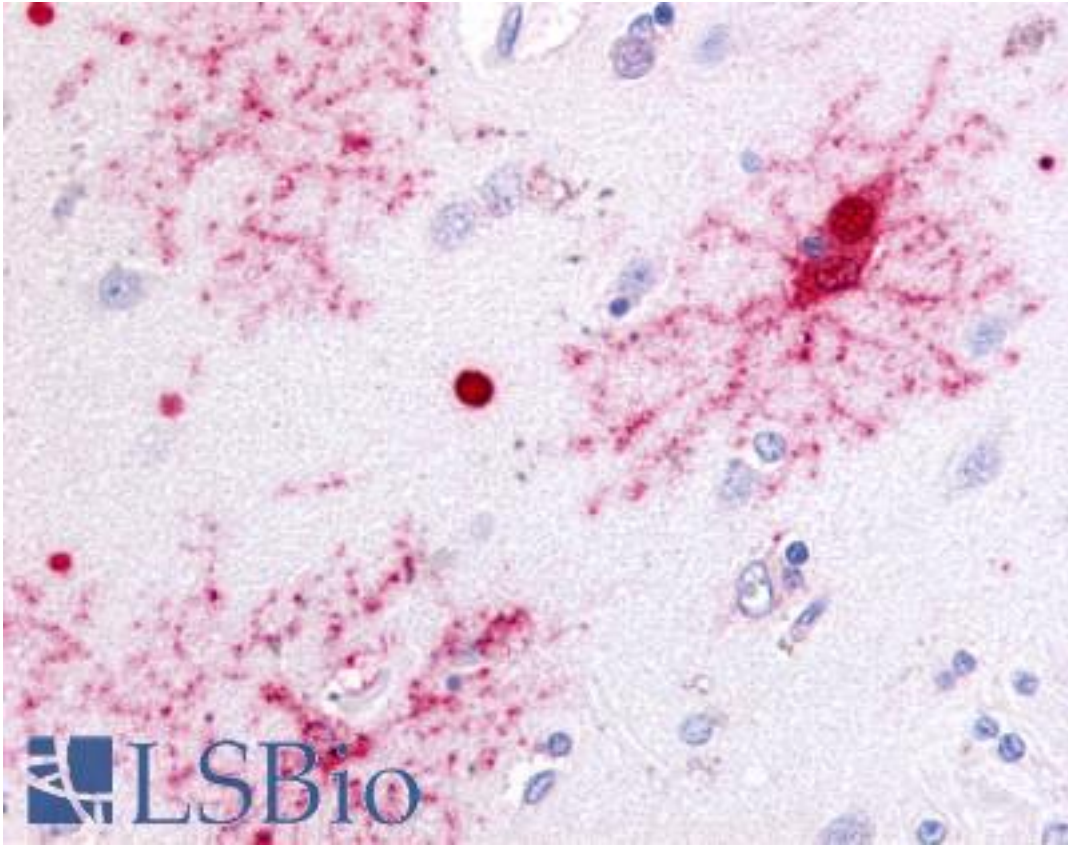


PAEL Receptor / GPR37 Rabbit anti-Human Polyclonal (N-Terminus) Antibody - LS-A4564 - LSBio	
<b>CatalogID:</b>	LS-A4564
<b>Target:</b>	G protein-coupled receptor 37 (endothelin receptor type B-like) (GPR37)
<b>Synonyms:</b>	GPR37 Antibody, EDNRBL Antibody, ETBR-LP-1 Antibody, Gpcr/cns1 Antibody, HET(B)R-LP Antibody, Het-b-r-lp Antibody, PAELR Antibody, Pael receptor Antibody
<b>Family / Subfamily:</b>	GPCR / Orphan-A
<b>Host</b>	GPR37 antibody was produced in Rabbit
<b>Clonality:</b>	Polyclonal
<b>Immunogen Species:</b>	PAEL Receptor / GPR37 antibody was raised against Human
<b>Antigen Type:</b>	Synthetic peptide
<b>Immunogen:</b>	PAEL Receptor / GPR37 antibody was raised against synthetic 16 amino acid peptide from N-terminal extracellular domain of human GPR37. Percent identity with other species by BLAST analysis: Human, Gorilla (100%); Monkey, Rabbit (88%); Gibbon, Bovine (81%).
<b>Specificity:</b>	Human GPR37. BLAST analysis of the peptide immunogen showed no homology with other human proteins.
<b>Epitope:</b>	N-Terminus
<b>Reactivity:</b>	Human, Gorilla
<b>Purification:</b>	Immunoaffinity purified
<b>Presentation:</b>	PBS, 0.1% sodium azide.
<b>Recommended Storage:</b>	Long term: -70°C; Short term: +4°C
<b>Usage Summary:</b>	Immunohistochemistry: LS-A4564 was validated for use in immunohistochemistry on a panel of 21 formalin-fixed, paraffin-embedded (FFPE) human tissues after heat induced antigen retrieval in pH 6.0 citrate buffer. After incubation with the primary antibody, slides were incubated with biotinylated secondary antibody, followed by alkaline phosphatase-streptavidin and chromogen. The stained slides were evaluated by a pathologist to confirm staining specificity. The optimal working concentration for LS-A4564 was determined to be 20 ug/ml.
<b>Uses:</b>	IHC - Paraffin (20 µg/ml) (Optimal dilution to be determined by the researcher)
<b>Size:</b>	50 µg
<b>Concentration:</b>	1 mg/ml

**Immunohistochemistry Image:**



Anti-GPR37 antibody LS-A4564 IHC of human brain. Immunohistochemistry of formalin-fixed, paraffin-embedded tissue after heat-induced antigen retrieval.

**Requested From:**

Japan

Laboratory Reagent For In Vitro Research Use Only

Not for resale without prior written consent from LifeSpan BioSciences, Inc.

Created on 9/23/2014

© 2014 LifeSpan BioSciences