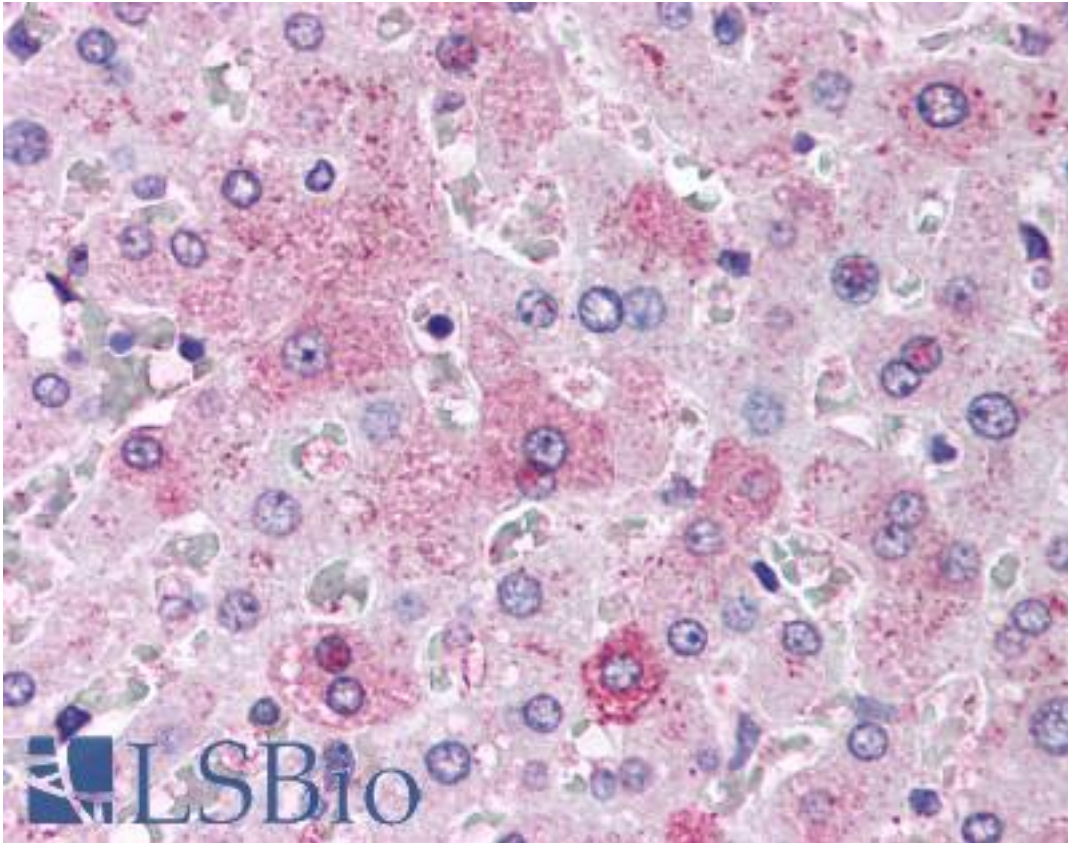


| GCGR / Glucagon Receptor Rabbit anti-Human Polyclonal (C-Terminus) Antibody - LS-A4263 - LSBio | |
|--|--|
| CatalogID: | LS-A4263 |
| Target: | glucagon receptor (GCGR) |
| Synonyms: | GCGR Antibody, GL-R Antibody, Glucagon receptor Antibody, GGR Antibody |
| Family / Subfamily: | GPCR / Glucagon |
| Host | GCGR antibody was produced in Rabbit |
| Clonality: | Polyclonal |
| Immunogen Species: | GCGR / Glucagon Receptor antibody was raised against Human |
| Antigen Type: | Synthetic peptide |
| Immunogen: | GCGR / Glucagon Receptor antibody was raised against synthetic 18 amino acid peptide from C-terminus of human Glucagon Receptor. Percent identity with other species by BLAST analysis: Human (100%); Gorilla (94%); Monkey (83%). |
| Specificity: | Human Glucagon Receptor. BLAST analysis of the peptide immunogen showed no homology with other human proteins. |
| Epitope: | C-Terminus |
| Reactivity: | Human |
| Predicted Reactivity: | Gorilla |
| Purification: | Immunoaffinity purified |
| Presentation: | PBS, 0.1% sodium azide. |
| Recommended Storage: | Long term: -70°C; Short term: +4°C |
| Uses: | IHC - Paraffin (6 µg/ml) (Optimal dilution to be determined by the researcher) |
| Size: | 50 µg |
| Concentration: | 1 mg/ml |

Immunohistochemistry Image:



Anti-Glucagon Receptor antibody LS-A4263 IHC of human liver. Immunohistochemistry of formalin-fixed, paraffin-embedded tissue after heat-induced antigen retrieval.

Requested From:

Japan

Laboratory Reagent For In Vitro Research Use Only

Not for resale without prior written consent from LifeSpan BioSciences, Inc.

Created on 9/23/2014

© 2014 LifeSpan BioSciences