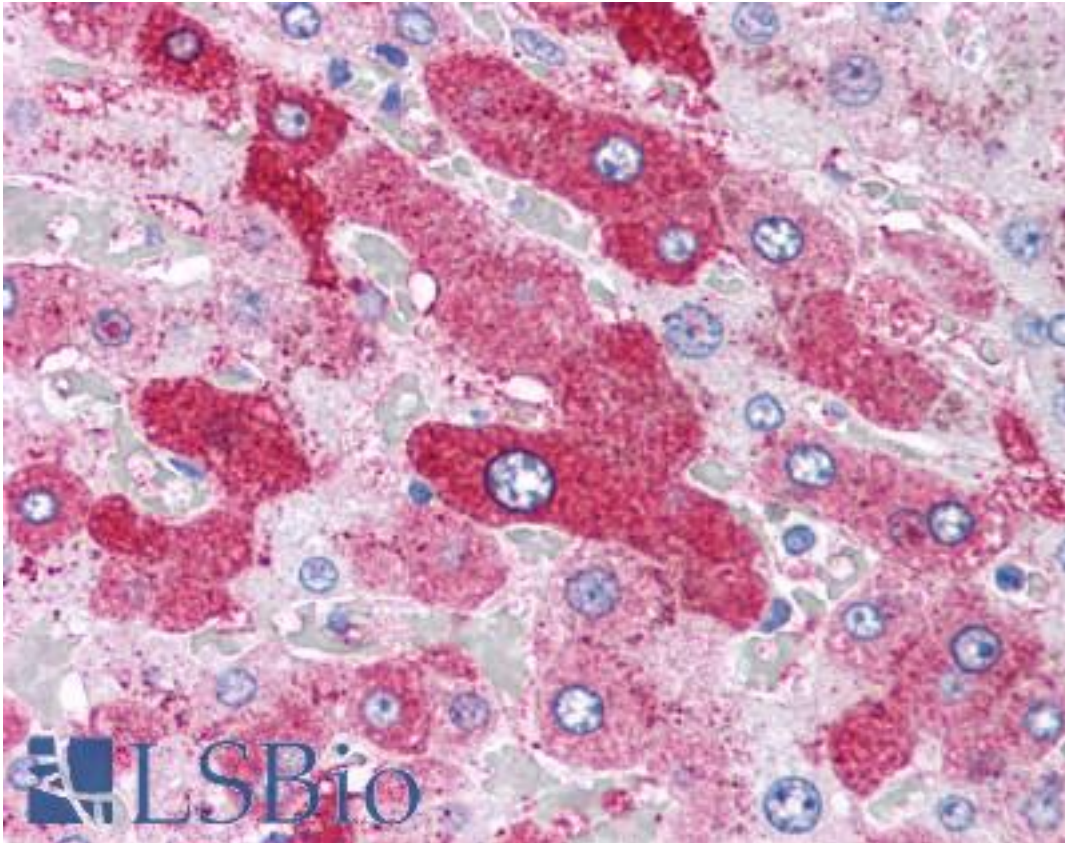


GCGR / Glucagon Receptor Rabbit anti-Human Polyclonal (N-Terminus) Antibody - LS-A4258 - LSBio	
CatalogID:	LS-A4258
Target:	glucagon receptor (GCGR)
Synonyms:	GCGR Antibody, GL-R Antibody, Glucagon receptor Antibody, GGR Antibody
Family / Subfamily:	GPCR / Glucagon
Host	GCGR antibody was produced in Rabbit
Clonality:	Polyclonal
Immunogen Species:	GCGR / Glucagon Receptor antibody was raised against Human
Antigen Type:	Synthetic peptide
Immunogen:	GCGR / Glucagon Receptor antibody was raised against synthetic 15 amino acid peptide from N-terminal extracellular domain of human Glucagon Receptor. Percent identity with other species by BLAST analysis: Human, Gorilla, Gibbon, Monkey (100%); Mouse, Rat, Hamster, Elephant, Panda, Bovine, Dog, Horse (93%); Opossum (87%).
Specificity:	Human Glucagon Receptor. BLAST analysis of the peptide immunogen showed no homology with other human proteins.
Epitope:	N-Terminus
Reactivity:	Human, Gorilla, Gibbon, Monkey
Predicted Reactivity:	Mouse, Rat, Bovine, Dog, Hamster, Horse
Purification:	Immunoaffinity purified
Presentation:	PBS, 0.1% sodium azide.
Recommended Storage:	Long term: -70°C; Short term: +4°C
Uses:	IHC - Paraffin (15 µg/ml) (Optimal dilution to be determined by the researcher)
Size:	50 µg
Concentration:	1 mg/ml

Immunohistochemistry Image:



Anti-Glucagon Receptor antibody LS-A4258 IHC of human liver. Immunohistochemistry of formalin-fixed, paraffin-embedded tissue after heat-induced antigen retrieval.

Requested From:

Japan

Laboratory Reagent For In Vitro Research Use Only

Not for resale without prior written consent from LifeSpan BioSciences, Inc.

Created on 9/23/2014

© 2014 LifeSpan BioSciences