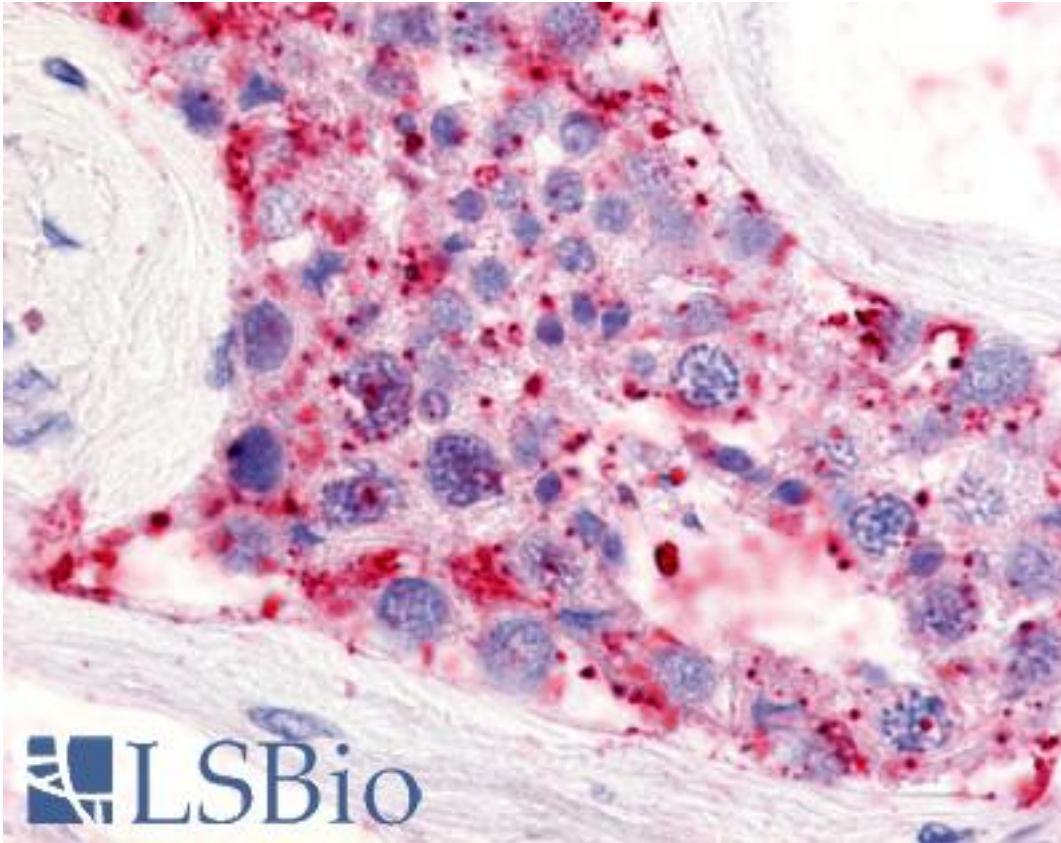


LPA5 / GPR92 Rabbit anti-Human Polyclonal (Extracellular Domain) Antibody - LS-A425 - LSBio	
CatalogID:	LS-A425
Target:	lysophosphatidic acid receptor 5 (LPA5)
Synonyms:	LPA5 Antibody, G-protein coupled receptor 92 Antibody, GPR92 Antibody, GPR93 Antibody, LPA receptor 5 Antibody, LPA-5 Antibody, KPG_010 Antibody, LPA5 Antibody, G protein-coupled receptor 92 Antibody, G-protein coupled receptor 93 Antibody
Family / Subfamily:	GPCR / Orphan-A
Host	LPA5 antibody was produced in Rabbit
Clonality:	Polyclonal
Immunogen Species:	LPA5 / GPR92 antibody was raised against Human
Antigen Type:	Synthetic peptide
Immunogen:	LPA5 / GPR92 antibody was raised against synthetic 15 amino acid peptide from 2nd extracellular domain of human LPA5 / GPR92. Percent identity with other species by BLAST analysis: Human, Gorilla, Gibbon, Monkey, Marmoset (100%); Rabbit (80%).
Specificity:	Human LPA5 / GPR92. BLAST analysis of the peptide immunogen showed no homology with other human proteins.
Epitope:	Extracellular Domain
Reactivity:	Human, Gorilla, Gibbon, Monkey
Purification:	Immunoaffinity purified
Presentation:	PBS, 0.1% sodium azide.
Recommended Storage:	Long term: -70°C; Short term: +4°C
Uses:	IHC - Paraffin (3.6 µg/ml), ICC (Optimal dilution to be determined by the researcher)
Size:	50 µg
Concentration:	1 mg/ml

Immunohistochemistry Image:



Anti-LPAR5 / GPR92 antibody LS-A425 IHC of human testis, seminiferous tubule.
Immunohistochemistry of formalin-fixed, paraffin-embedded tissue after heat-induced antigen retrieval.

Requested From:

Japan

Laboratory Reagent For In Vitro Research Use Only

Not for resale without prior written consent from LifeSpan BioSciences, Inc.

Created on 9/23/2014

© 2014 LifeSpan BioSciences