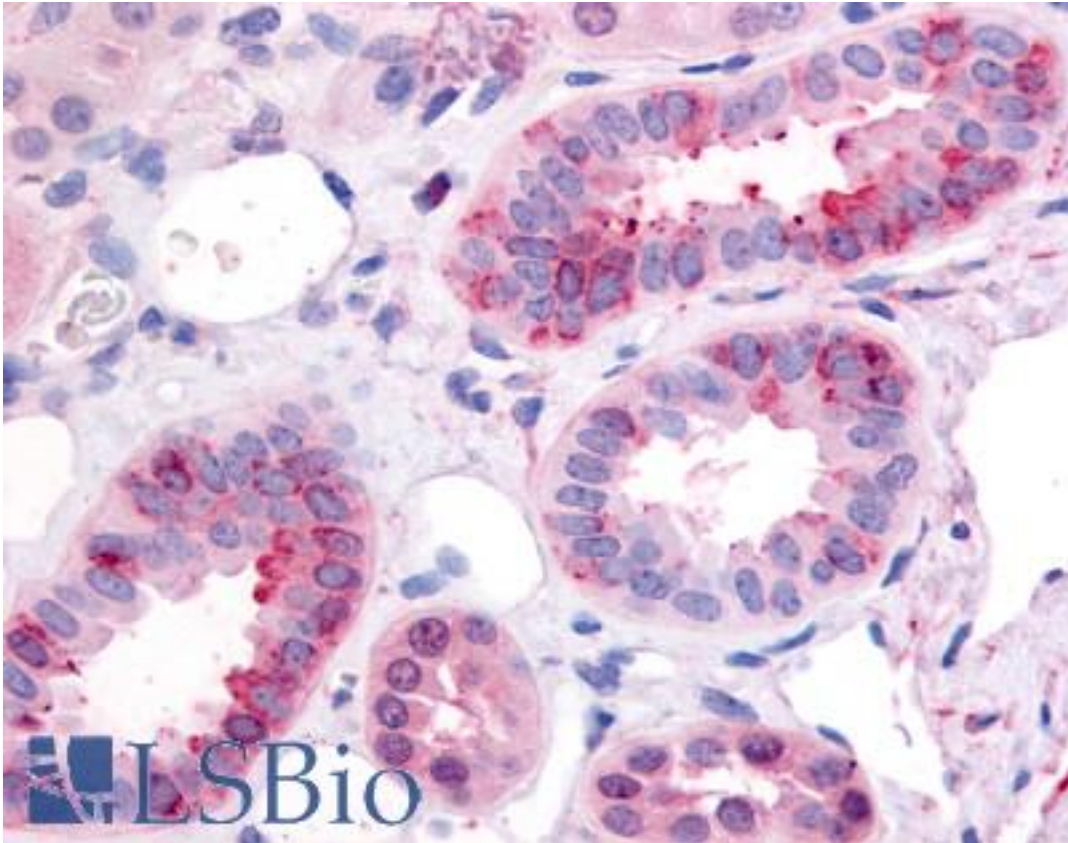


GPR1 Rabbit anti-Human Polyclonal (Cytoplasmic Domain) Antibody - LS-A4234 - LSBio	
CatalogID:	LS-A4234
Target:	G protein-coupled receptor 1 (GPR1)
Synonyms:	GPR1 Antibody, G-protein coupled receptor 1 Antibody, G protein-coupled receptor 1 Antibody, Gpr-1 Antibody
Family / Subfamily:	GPCR / Orphan-A
Host	GPR1 antibody was produced in Rabbit
Clonality:	Polyclonal
Immunogen Species:	GPR1 antibody was raised against Human
Antigen Type:	Synthetic peptide
Immunogen:	GPR1 antibody was raised against synthetic 15 amino acid peptide from 2nd cytoplasmic domain of human GPR1. Percent identity with other species by BLAST analysis: Human, Gorilla, Gibbon, Monkey (100%); Hamster, Dog, Rabbit (93%); Marmoset, Mouse, Rat, Elephant, Panda (87%); Bovine, Horse, Pig, Opossum (80%).
Specificity:	Human GPR1. BLAST analysis of the peptide immunogen showed no homology with other human proteins, except LONRF2 (47%).
Epitope:	Cytoplasmic Domain
Reactivity:	Human, Gorilla, Gibbon, Monkey
Predicted Reactivity:	Dog, Hamster, Rabbit
Purification:	Immunoaffinity purified
Presentation:	PBS, 0.1% sodium azide.
Recommended Storage:	Long term: -70°C; Short term: +4°C
Uses:	IHC - Paraffin (15 - 20 µg/ml) (Optimal dilution to be determined by the researcher)
Size:	50 µg
Concentration:	1 mg/ml

Immunohistochemistry Image:



Anti-GPR1 antibody LS-A4234 IHC of human kidney. Immunohistochemistry of formalin-fixed, paraffin-embedded tissue after heat-induced antigen retrieval.

Requested From:

Japan

Laboratory Reagent For In Vitro Research Use Only

Not for resale without prior written consent from LifeSpan BioSciences, Inc.

Created on 9/23/2014

© 2014 LifeSpan BioSciences