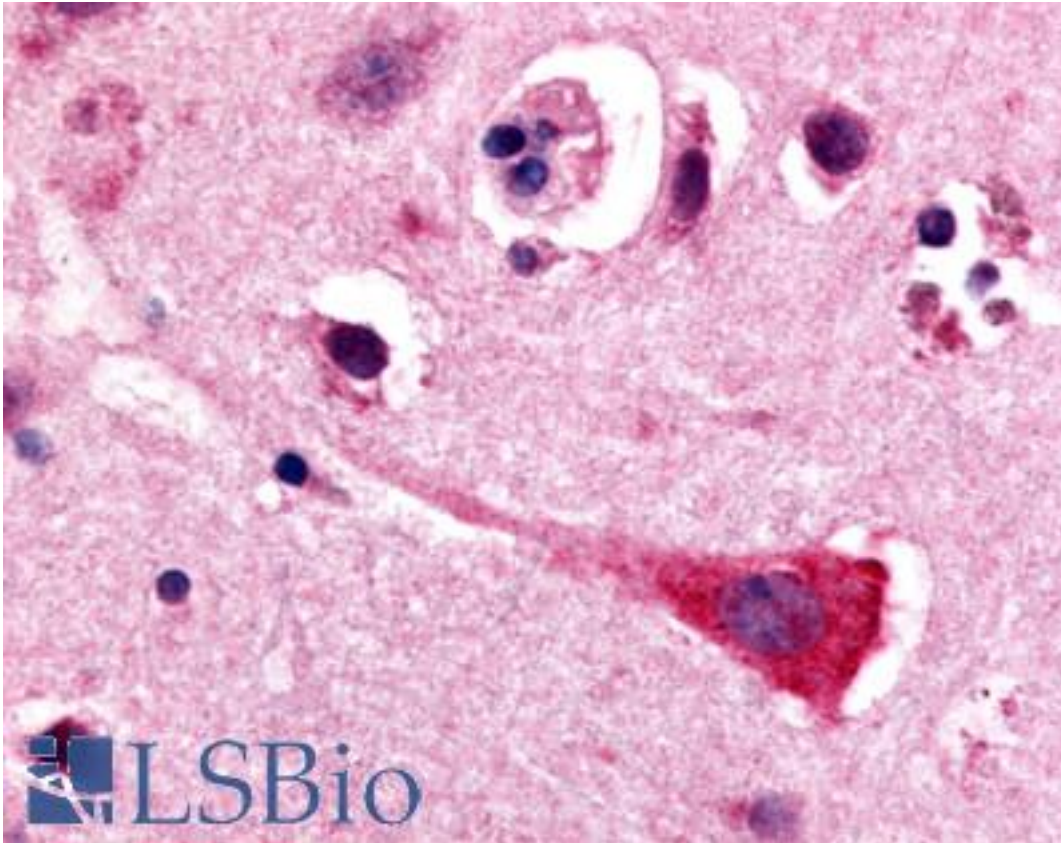


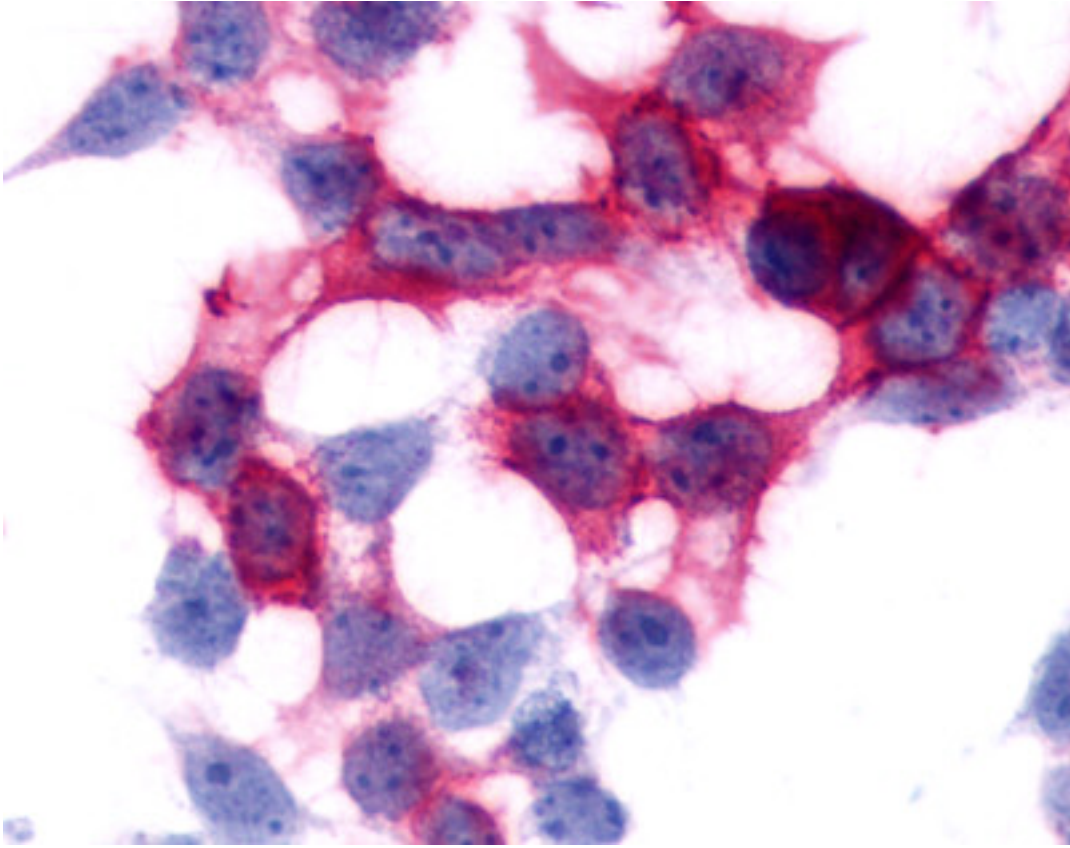
**GPR17 Rabbit anti-Human Polyclonal (N-Terminus) Antibody - LS-A4229 - LSBio**

<b>CatalogID:</b>	LS-A4229
<b>Target:</b>	G protein-coupled receptor 17 (GPR17)
<b>Synonyms:</b>	GPR17 Antibody, G protein-coupled receptor 17 Antibody, G-protein coupled receptor 17 Antibody, p2Y-like receptor Antibody, Y12546 Antibody, Z94155 Antibody, R12 Antibody, UDP/CysLT receptor Antibody
<b>Family / Subfamily:</b>	GPCR / Orphan-A
<b>Host</b>	GPR17 antibody was produced in Rabbit
<b>Clonality:</b>	Polyclonal
<b>Immunogen Species:</b>	GPR17 antibody was raised against Human
<b>Antigen Type:</b>	Synthetic peptide
<b>Immunogen:</b>	GPR17 antibody was raised against synthetic 16 amino acid peptide from N-terminal extracellular domain of human GPR17. Percent identity with other species by BLAST analysis: Human, Gorilla, Gibbon (100%).
<b>Specificity:</b>	Human GPR17. BLAST analysis of the peptide immunogen showed no homology with other human proteins.
<b>Epitope:</b>	N-Terminus
<b>Reactivity:</b>	Human, Gorilla, Gibbon
<b>Purification:</b>	Immunoaffinity purified
<b>Presentation:</b>	PBS, 0.1% sodium azide.
<b>Recommended Storage:</b>	Long term: -70°C; Short term: +4°C
<b>Uses:</b>	IHC - Paraffin (3 µg/ml), ICC (3 - 16 µg/ml) (Optimal dilution to be determined by the researcher)
<b>Size:</b>	50 µg
<b>Concentration:</b>	1 mg/ml

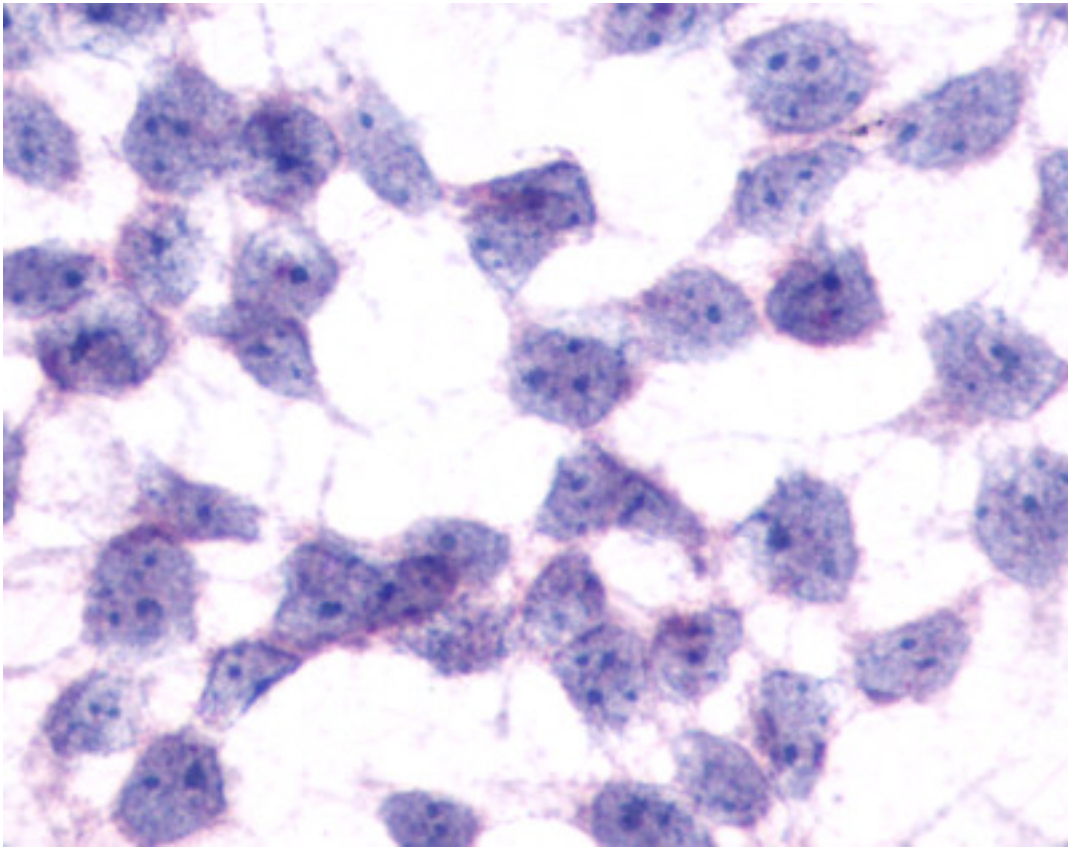
**Immunohistochemistry Image:**



Anti-GPR17 antibody LS-A4229 IHC of human brain, neurons and glia.  
Immunohistochemistry of formalin-fixed, paraffin-embedded tissue after heat-induced antigen retrieval.



Cells expressing vector only - immunostained with target antibody



Cells expressing vector only - immunostained with target antibody

**Requested From:**

Japan

Laboratory Reagent For In Vitro Research Use Only

Not for resale without prior written consent from LifeSpan BioSciences, Inc.

Created on 9/23/2014

© 2014 LifeSpan BioSciences