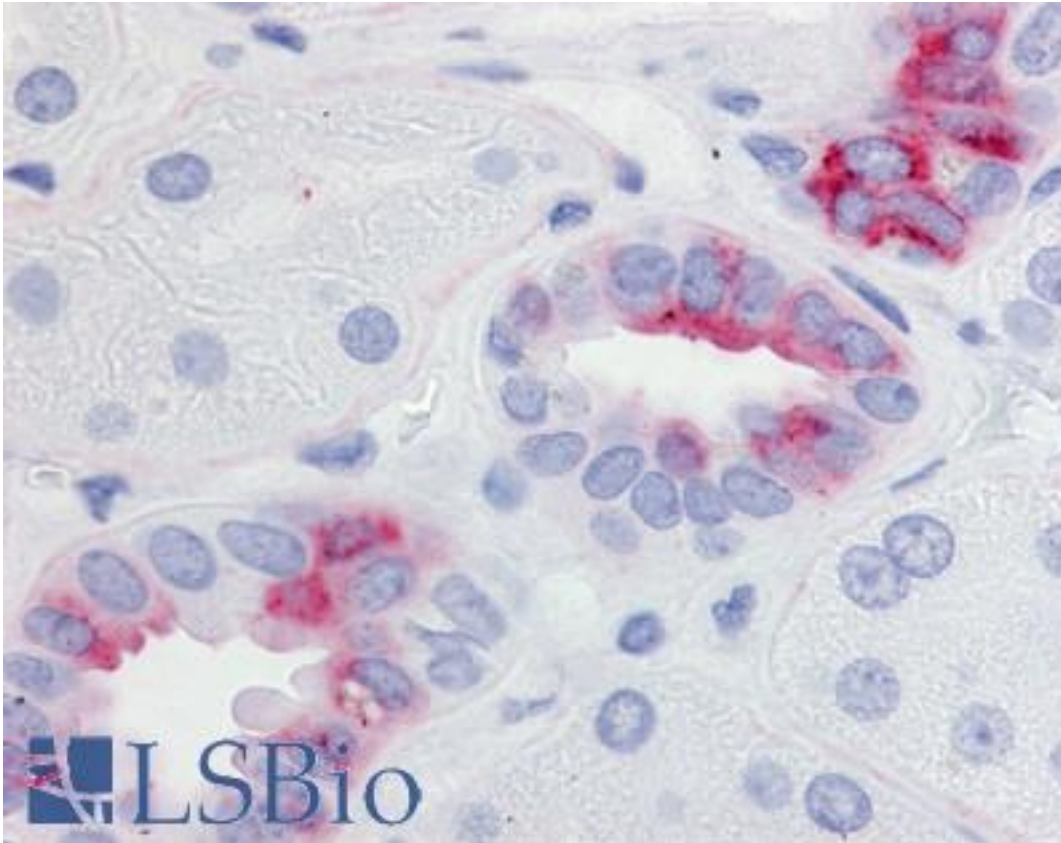


PTGER2 / EP2 Rabbit anti-Human Polyclonal (Cytoplasmic Domain) Antibody - LS-A4219 - LSBio	
<b>CatalogID:</b>	LS-A4219
<b>Target:</b>	prostaglandin E receptor 2 (subtype EP2), 53kDa (PTGER2)
<b>Synonyms:</b>	PTGER2 Antibody, EP2 prostaglandin e2 receptor Antibody, EP2 prostaglandin receptor Antibody, EP2 Antibody, Pge2-r ep2 Antibody, PGE2 receptor EP2 subtype Antibody, Prostaglandin E receptor 2 Antibody, Prostanoid EP2 receptor Antibody, EP2 receptor Antibody, PGE receptor EP2 subtype Antibody
<b>Family / Subfamily:</b>	GPCR / Prostanoid
<b>Host</b>	PTGER2 antibody was produced in Rabbit
<b>Clonality:</b>	Polyclonal
<b>Immunogen Species:</b>	PTGER2 / EP2 antibody was raised against Human
<b>Antigen Type:</b>	Synthetic peptide
<b>Immunogen:</b>	PTGER2 / EP2 antibody was raised against synthetic 16 amino acid peptide from 2nd cytoplasmic domain of human EP2. Percent identity with other species by BLAST analysis: Human, Gorilla, Gibbon, Monkey, Marmoset (100%); Elephant (94%); Rat, Sheep, Bovine, Horse (88%); Dog, Hamster, Panda (81%).
<b>Specificity:</b>	Human EP2. BLAST analysis of the peptide immunogen showed no homology with other human proteins, except PTGER4 (50%).
<b>Epitope:</b>	Cytoplasmic Domain
<b>Reactivity:</b>	Human, Gorilla, Gibbon, Monkey
<b>Purification:</b>	Immunoaffinity purified
<b>Presentation:</b>	PBS, 0.1% sodium azide.
<b>Recommended Storage:</b>	Long term: -70°C; Short term: +4°C
<b>Usage Summary:</b>	Immunohistochemistry: LS-A4219 was validated for use in immunohistochemistry on a panel of 21 formalin-fixed, paraffin-embedded (FFPE) human tissues after heat induced antigen retrieval in pH 6.0 citrate buffer. After incubation with the primary antibody, slides were incubated with biotinylated secondary antibody, followed by alkaline phosphatase-streptavidin and chromogen. The stained slides were evaluated by a pathologist to confirm staining specificity. The optimal working concentration for LS-A4219 was determined to be 20-40 ug/ml.
<b>Uses:</b>	IHC - Paraffin (40 µg/ml), ELISA (Optimal dilution to be determined by the researcher)
<b>Size:</b>	50 µg
<b>Concentration:</b>	1 mg/ml

**Immunohistochemistry Image:**



Anti-EP2 antibody LS-A4219 IHC of human kidney. Immunohistochemistry of formalin-fixed, paraffin-embedded tissue after heat-induced antigen retrieval.

**Requested From:**

Japan

Laboratory Reagent For In Vitro Research Use Only

Not for resale without prior written consent from LifeSpan BioSciences, Inc.

Created on 9/23/2014

© 2014 LifeSpan BioSciences