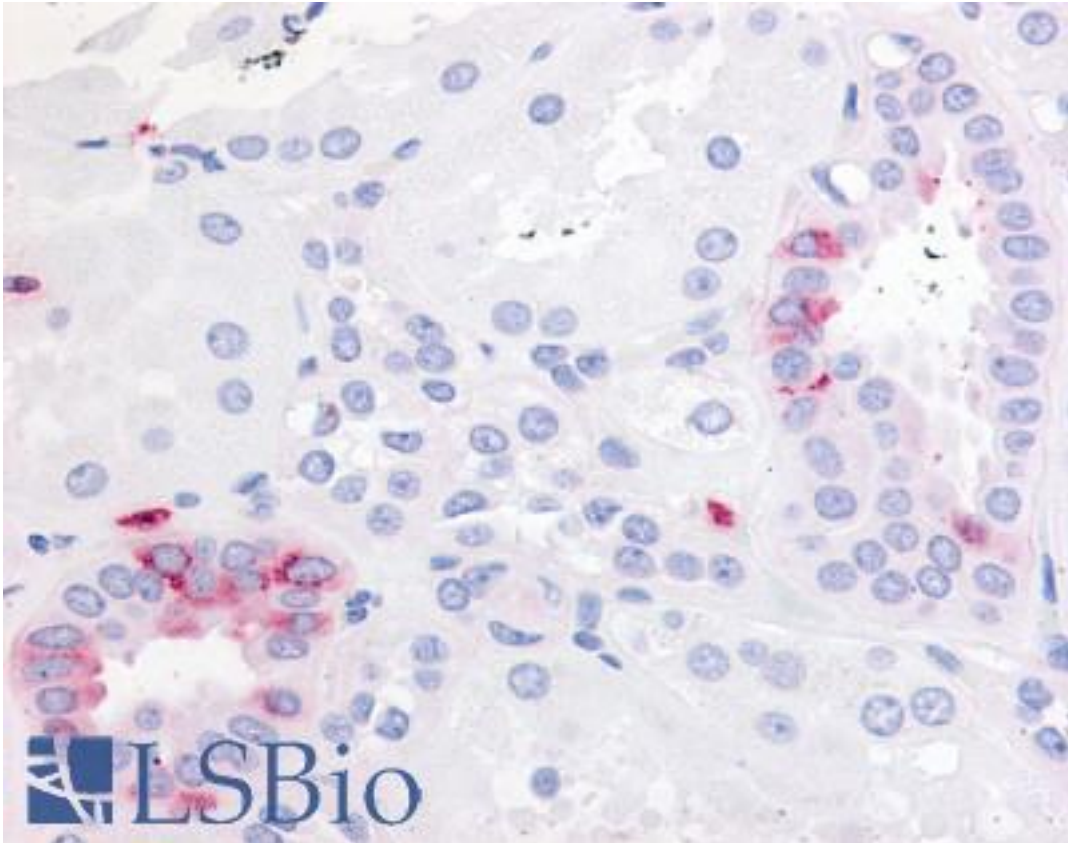


PTGER2 / EP2 Rabbit anti-Human Polyclonal (Extracellular Domain) Antibody - LS-A4202 - LSBio	
CatalogID:	LS-A4202
Target:	prostaglandin E receptor 2 (subtype EP2), 53kDa (PTGER2)
Synonyms:	PTGER2 Antibody, EP2 prostaglandin e2 receptor Antibody, EP2 prostaglandin receptor Antibody, EP2 Antibody, Pge2-r ep2 Antibody, PGE2 receptor EP2 subtype Antibody, Prostaglandin E receptor 2 Antibody, Prostanoid EP2 receptor Antibody, EP2 receptor Antibody, PGE receptor EP2 subtype Antibody
Family / Subfamily:	GPCR / Prostanoid
Host	PTGER2 antibody was produced in Rabbit
Clonality:	Polyclonal
Immunogen Species:	PTGER2 / EP2 antibody was raised against Human
Antigen Type:	Synthetic peptide
Immunogen:	PTGER2 / EP2 antibody was raised against synthetic 14 amino acid peptide from 3rd extracellular domain of human EP2. Percent identity with other species by BLAST analysis: Human, Gorilla, Gibbon, Monkey, Mouse, Bovine, Bat, Panda, Pig (100%); Marmoset, Rat, Dog, Elephant (93%); Turkey, Chicken, Platypus (86%).
Specificity:	Human EP2. BLAST analysis of the peptide immunogen showed no homology with other human proteins.
Epitope:	Extracellular Domain
Reactivity:	Human, Gorilla, Gibbon, Mouse, Bat, Bovine, Pig
Predicted Reactivity:	Monkey, Rat, Dog
Purification:	Immunoaffinity purified
Presentation:	PBS, 0.1% sodium azide.
Recommended Storage:	Long term: -70°C; Short term: +4°C
Usage Summary:	Immunohistochemistry: LS-A4202 was validated for use in immunohistochemistry on a panel of 21 formalin-fixed, paraffin-embedded (FFPE) human tissues after heat induced antigen retrieval in pH 6.0 citrate buffer. After incubation with the primary antibody, slides were incubated with biotinylated secondary antibody, followed by alkaline phosphatase-streptavidin and chromogen. The stained slides were evaluated by a pathologist to confirm staining specificity. The optimal working concentration for LS-A4202 was determined to be 20-40 ug/ml.
Uses:	IHC - Paraffin (40 µg/ml), ELISA (Optimal dilution to be determined by the researcher)
Size:	50 µg
Concentration:	1 mg/ml

Immunohistochemistry Image:



Anti-EP2 antibody LS-A4202 IHC of human kidney. Immunohistochemistry of formalin-fixed, paraffin-embedded tissue after heat-induced antigen retrieval.

Requested From:

Japan

Laboratory Reagent For In Vitro Research Use Only

Not for resale without prior written consent from LifeSpan BioSciences, Inc.

Created on 9/23/2014

© 2014 LifeSpan BioSciences