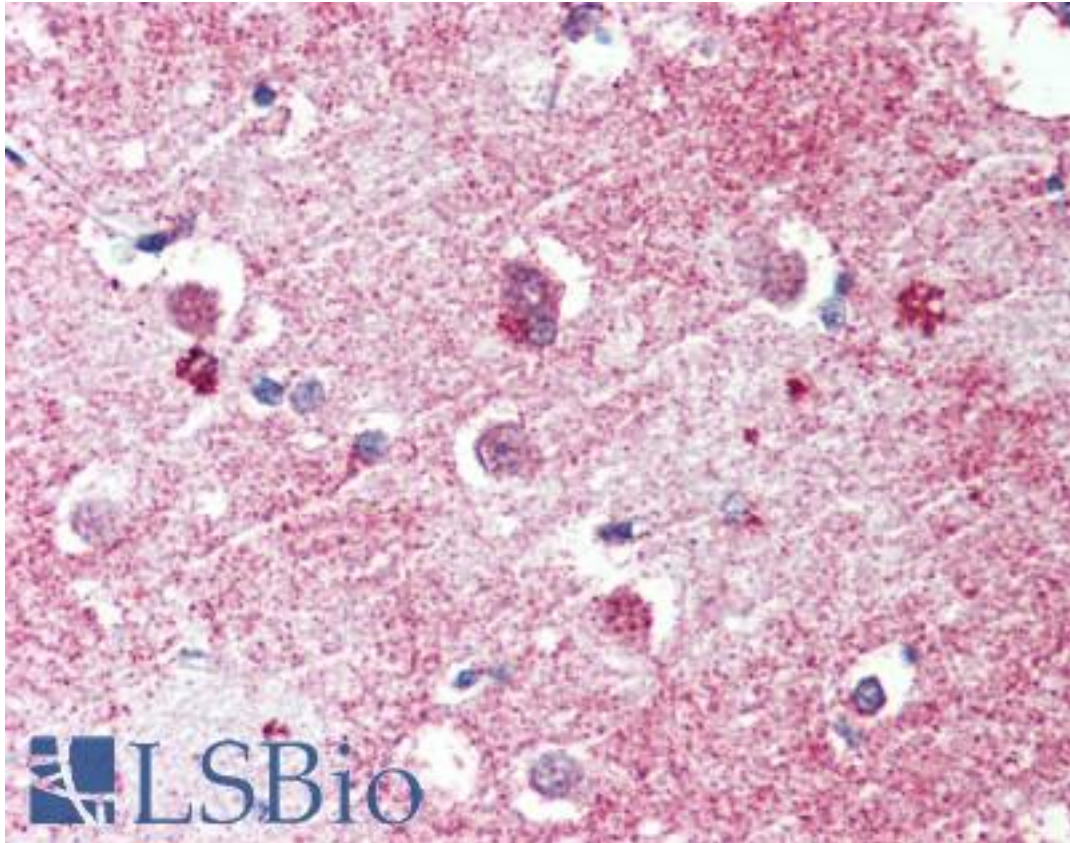


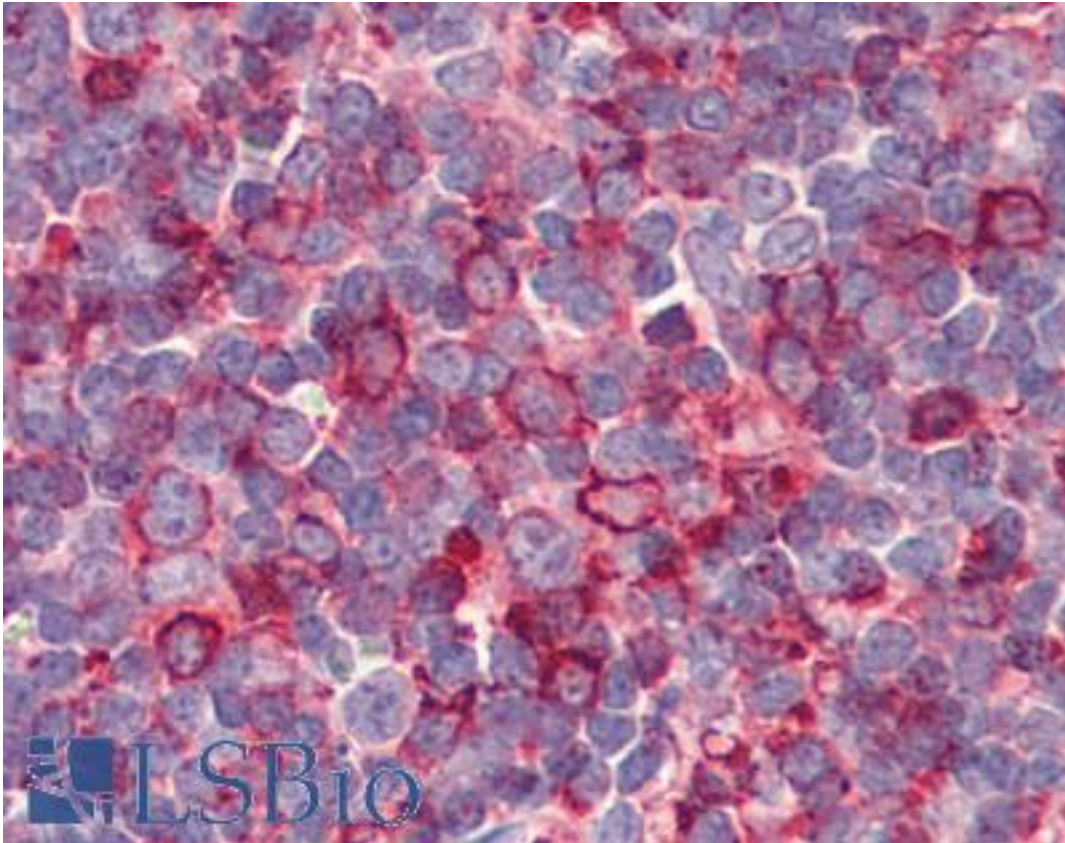
GPR26 Rabbit anti-Human Polyclonal (Internal) Antibody - LS-A4143 - LSBio	
CatalogID:	LS-A4143
Target:	G protein-coupled receptor 26 (GPR26)
Synonyms:	GPR26 Antibody, G-protein coupled receptor 26 Antibody, G protein-coupled receptor 26 Antibody
Family / Subfamily:	GPCR / Orphan-A
Host	GPR26 antibody was produced in Rabbit
Clonality:	Polyclonal
Immunogen Species:	GPR26 antibody was raised against Human
Antigen Type:	Synthetic peptide
Immunogen:	GPR26 antibody was raised against synthetic 11 amino acid peptide from internal region of human GPR26. Percent identity with other species by BLAST analysis: Human, Gibbon, Monkey, Marmoset, Bovine, Dog, Elephant, Panda, Horse (100%); Mouse, Rat, Rabbit, Pig (91%); Stickleback (82%).
Specificity:	Human GPR26. BLAST analysis of the peptide immunogen showed no homology with other human proteins.
Epitope:	Internal
Reactivity:	Human, Gibbon, Monkey, Bovine, Dog, Horse
Predicted Reactivity:	Mouse, Rat, Pig, Rabbit
Purification:	Immunoaffinity purified
Presentation:	PBS, 0.1% sodium azide.
Recommended Storage:	Long term: -70°C; Short term: +4°C
Usage Summary:	Immunohistochemistry with formalin-fixed paraffin-embedded tissues requires pretreatment with Proteinase K.
Uses:	IHC - Paraffin (5 µg/ml) (Optimal dilution to be determined by the researcher)
Size:	50 µg
Concentration:	1 mg/ml

Immunohistochemistry Image:



Anti-GPR26 antibody LS-A4143 IHC of human brain, cortex. Immunohistochemistry of formalin-fixed, paraffin-embedded tissue after heat-induced antigen retrieval.

Immunohistochemistry Image:



Anti-GPR26 antibody LS-A4143 IHC of human tonsil. Immunohistochemistry of formalin-fixed, paraffin-embedded tissue after heat-induced antigen retrieval.

Requested From:

Japan

Laboratory Reagent For In Vitro Research Use Only

Not for resale without prior written consent from LifeSpan BioSciences, Inc.

Created on 9/23/2014

© 2014 LifeSpan BioSciences