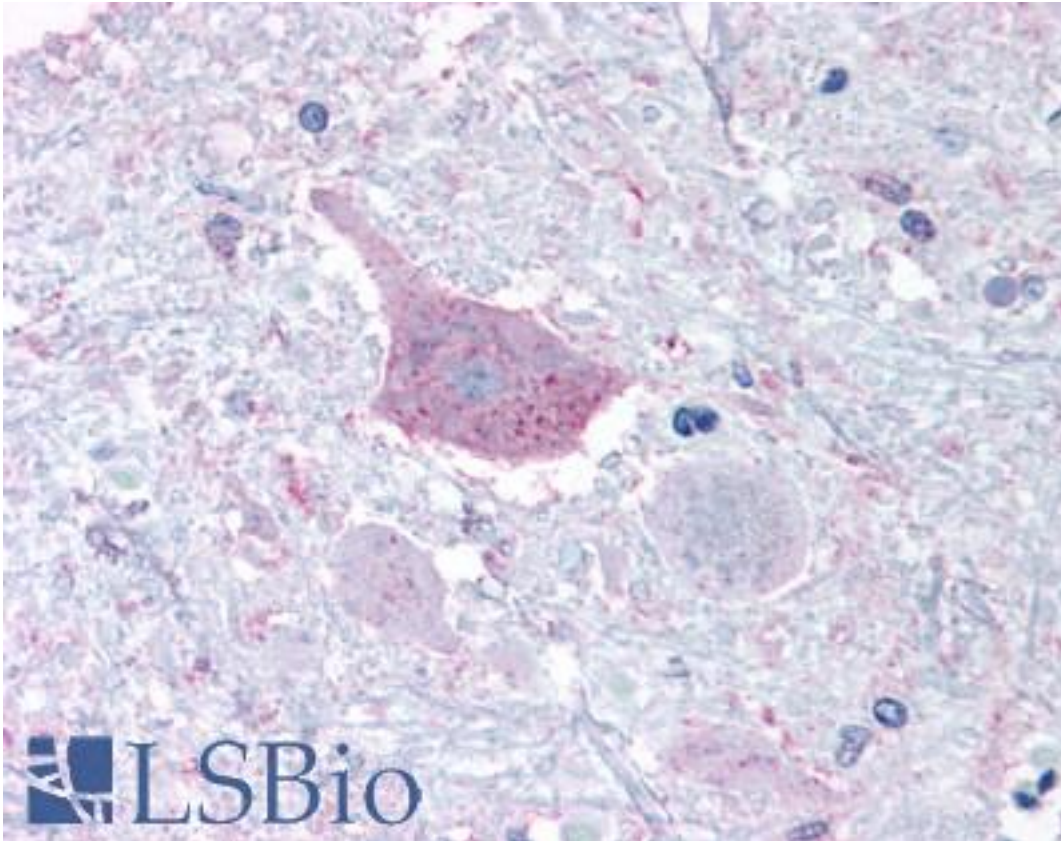


MRGD / MRGPRD Rabbit anti-Human Polyclonal (Cytoplasmic Domain) Antibody - LS-A4128 - LSBio

CatalogID:	LS-A4128
Target:	MAS-related GPR, member D (MRGPRD)
Synonyms:	MRGPRD Antibody, Beta-alanine receptor Antibody, MRGD Antibody, MAS-related GPR, member D Antibody, TGR7 Antibody
Family / Subfamily:	GPCR / Orphan-A
Host	MRGPRD antibody was produced in Rabbit
Clonality:	Polyclonal
Immunogen Species:	MRGD / MRGPRD antibody was raised against Human
Antigen Type:	Synthetic peptide
Immunogen:	MRGD / MRGPRD antibody was raised against synthetic 18 amino acid peptide from 3rd cytoplasmic domain of human MRGPRD. Percent identity with other species by BLAST analysis: Human (100%); Gorilla (94%); Gibbon (89%).
Specificity:	Human MRGPRD. BLAST analysis of the peptide immunogen showed no homology with other human proteins.
Epitope:	Cytoplasmic Domain
Reactivity:	Human
Predicted Reactivity:	Gorilla
Purification:	Immunoaffinity purified
Presentation:	PBS, 0.1% sodium azide.
Recommended Storage:	Long term: -70°C; Short term: +4°C
Uses:	IHC - Paraffin (10 µg/ml) (Optimal dilution to be determined by the researcher)
Size:	50 µg
Concentration:	1 mg/ml

Immunohistochemistry Image:



Anti-MRGPRD antibody LS-A4128 IHC of human brain, medulla. Immunohistochemistry of formalin-fixed, paraffin-embedded tissue after heat-induced antigen retrieval.

Requested From:

Japan

Laboratory Reagent For In Vitro Research Use Only

Not for resale without prior written consent from LifeSpan BioSciences, Inc.

Created on 9/23/2014

© 2014 LifeSpan BioSciences