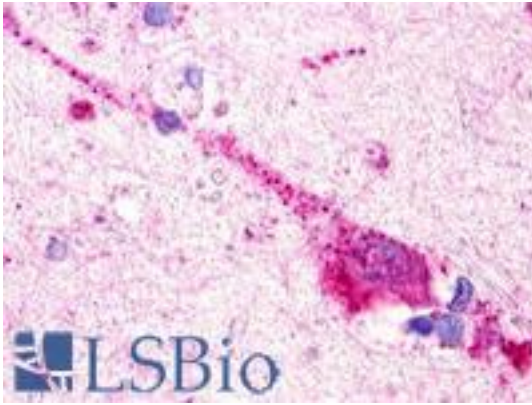


GPR174 Rabbit anti-Human Polyclonal (Extracellular Domain) Antibody - LS-A409 - LSBio

CatalogID:	LS-A409
Target:	G protein-coupled receptor 174 (GPR174)
Synonyms:	GPR174 Antibody, FKSG79 Antibody, Jeg18 Antibody, Purinergic receptor fks79 Antibody, G protein-coupled receptor 174 Antibody
Family / Subfamily:	GPCR / Orphan-A
Host	GPR174 antibody was produced in Rabbit
Clonality:	Polyclonal
Immunogen Species:	GPR174 antibody was raised against Human
Antigen Type:	Synthetic peptide
Immunogen:	GPR174 antibody was raised against synthetic 16 amino acid peptide from 3rd extracellular domain of human GPR174. Percent identity with other species by BLAST analysis: Human, Gorilla, Gibbon, Monkey, Mouse, Rat, Bovine, Horse, Rabbit, Pig (100%); Bat (94%); Panda, Dog (88%); Opossum (81%).
Specificity:	Human GPR174. BLAST analysis of the peptide immunogen showed no homology with other human proteins.
Epitope:	Extracellular Domain
Reactivity:	Human, Gorilla, Gibbon, Monkey, Mouse, Rat, Bovine, Horse, Pig, Rabbit
Predicted Reactivity:	Bat
Purification:	Immunoaffinity purified
Presentation:	PBS, 0.1% sodium azide.
Recommended Storage:	Long term: -70°C; Short term: +4°C
Uses:	IHC - Paraffin (7 - 13 µg/ml) (Optimal dilution to be determined by the researcher)
Size:	50 µg
Concentration:	1 mg/ml

Immunohistochemistry Image:



Anti-GPR174 antibody LS-A409 IHC of human brain, neuron. Immunohistochemistry of formalin-fixed, paraffin-embedded tissue after heat-induced antigen retrieval.

Requested From:

Japan

Laboratory Reagent For In Vitro Research Use Only

Not for resale without prior written consent from LifeSpan BioSciences, Inc.

Created on 9/23/2014

© 2014 LifeSpan BioSciences