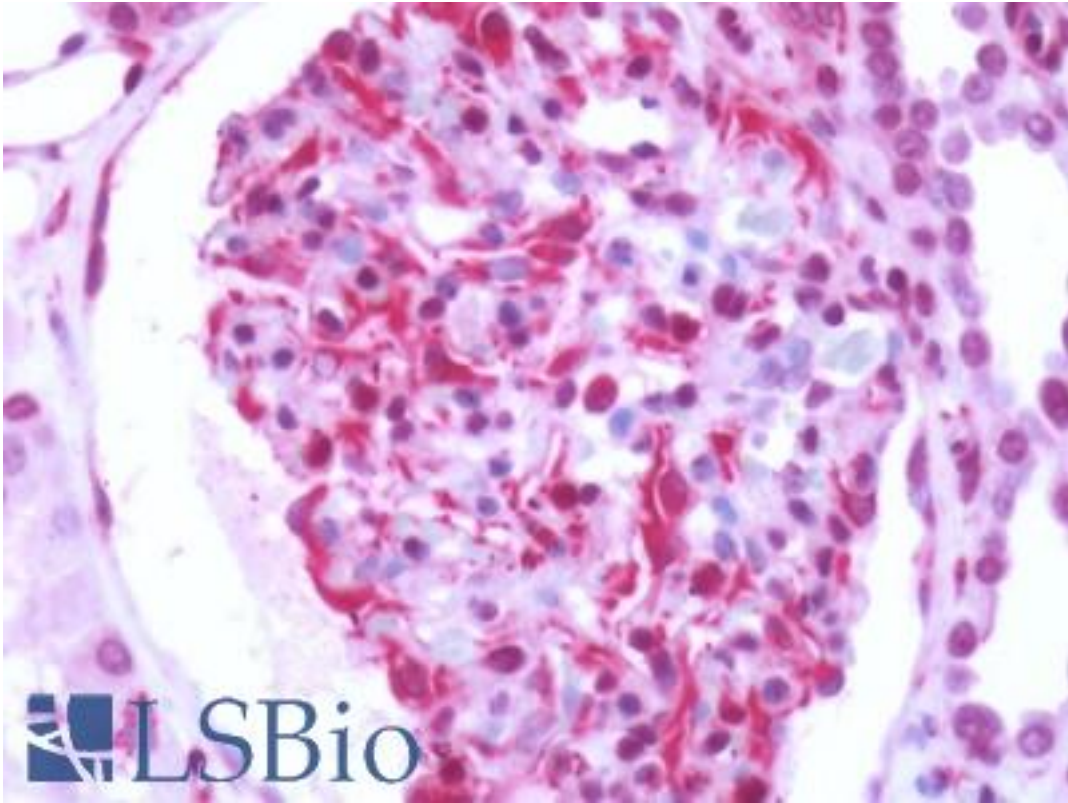


**RAIG2 / GPRC5B Rabbit anti-Human Polyclonal (N-Terminus) Antibody - LS-A4084 - LSBio**

<b>CatalogID:</b>	LS-A4084
<b>Target:</b>	G protein-coupled receptor, class C, group 5, member B (GPRC5B)
<b>Synonyms:</b>	GPRC5B Antibody, A-69G12.1 Antibody, RAIG2 Antibody, RAIG-2 Antibody
<b>Family / Subfamily:</b>	GPCR / Orphan-C
<b>Host</b>	GPRC5B antibody was produced in Rabbit
<b>Clonality:</b>	Polyclonal
<b>Immunogen Species:</b>	RAIG2 / GPRC5B antibody was raised against Human
<b>Antigen Type:</b>	Synthetic peptide
<b>Immunogen:</b>	RAIG2 / GPRC5B antibody was raised against synthetic 18 amino acid peptide from N-terminal extracellular domain of human GPRC5B. Percent identity with other species by BLAST analysis: Human, Gorilla, Orangutan, Gibbon, Monkey, Marmoset, Mouse, Rat, Elephant, Panda, Dog, Bovine, Horse, Rabbit, Opossum (100%); Turkey, Chicken (94%).
<b>Specificity:</b>	Human GPRC5B. BLAST analysis of the peptide immunogen showed no homology with other human proteins.
<b>Epitope:</b>	N-Terminus
<b>Reactivity:</b>	Human, Gorilla, Orangutan, Gibbon, Monkey, Mouse, Rat, Bovine, Dog, Horse, Rabbit
<b>Predicted Reactivity:</b>	Chicken
<b>Purification:</b>	Immunoaffinity purified
<b>Presentation:</b>	PBS, 0.1% sodium azide.
<b>Recommended Storage:</b>	Long term: -70°C; Short term: +4°C
<b>Uses:</b>	IHC - Paraffin (5 - 10 µg/ml) (Optimal dilution to be determined by the researcher)
<b>Size:</b>	50 µg
<b>Concentration:</b>	1 mg/ml

**Immunohistochemistry Image:**



Human Kidney: Formalin-Fixed, Paraffin-Embedded (FFPE)

**Requested From:**

Japan

Laboratory Reagent For In Vitro Research Use Only

Not for resale without prior written consent from LifeSpan BioSciences, Inc.

Created on 9/23/2014

© 2014 LifeSpan BioSciences