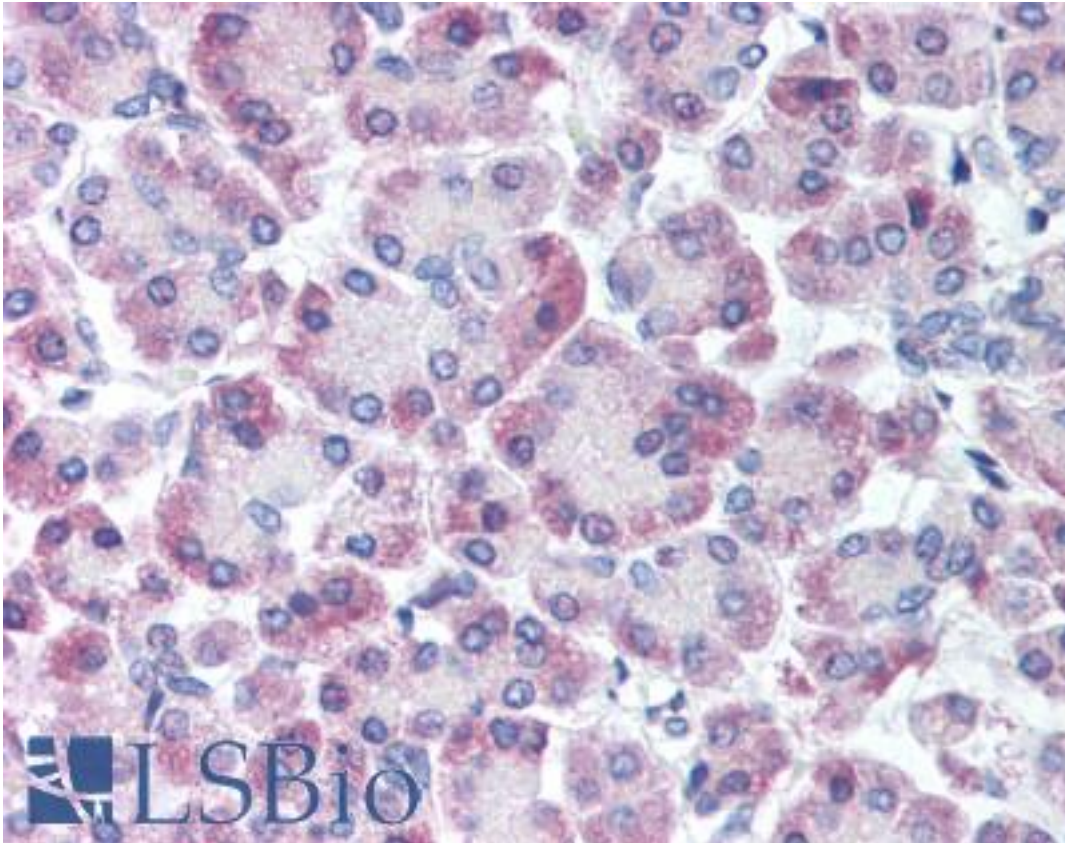


| GPRC5C Rabbit anti-Human Polyclonal (C-Terminus) Antibody - LS-A4082 - LSBio | |
|--|--|
| CatalogID: | LS-A4082 |
| Target: | G protein-coupled receptor, class C, group 5, member C (GPRC5C) |
| Synonyms: | GPRC5C Antibody, RAIG-3 Antibody, RAIG3 Antibody |
| Family / Subfamily: | GPCR / Orphan-C |
| Host | GPRC5C antibody was produced in Rabbit |
| Clonality: | Polyclonal |
| Immunogen Species: | GPRC5C antibody was raised against Human |
| Antigen Type: | Synthetic peptide |
| Immunogen: | GPRC5C antibody was raised against synthetic 18 amino acid peptide from C-terminal cytoplasmic domain of human GPRC5C. Percent identity with other species by BLAST analysis: Human (100%); Gorilla, Orangutan, Gibbon, Monkey, Marmoset (94%); Mouse, Rat, Dog, Bovine, Hamster, Elephant, Horse, Rabbit, Opossum, Xenopus (89%); Bat, Turkey, Lizard (83%). |
| Specificity: | Human GPRC5C. BLAST analysis of the peptide immunogen showed no homology with other human proteins. |
| Epitope: | C-Terminus |
| Reactivity: | Human |
| Predicted Reactivity: | Gorilla, Orangutan, Gibbon, Monkey |
| Purification: | Immunoaffinity purified |
| Presentation: | PBS, 0.1% sodium azide. |
| Recommended Storage: | Long term: -70°C; Short term: +4°C |
| Usage Summary: | Immunohistochemistry: LS-A4082 was validated for use in immunohistochemistry on a panel of 21 formalin-fixed, paraffin-embedded (FFPE) human tissues after heat induced antigen retrieval in pH 6.0 citrate buffer. After incubation with the primary antibody, slides were incubated with biotinylated secondary antibody, followed by alkaline phosphatase-streptavidin and chromogen. The stained slides were evaluated by a pathologist to confirm staining specificity. The optimal working concentration for LS-A4082 was determined to be 3-32 ug/ml. |
| Uses: | IHC - Paraffin (5 µg/ml), ELISA (Optimal dilution to be determined by the researcher) |
| Size: | 50 µg |
| Concentration: | 1 mg/ml |

Immunohistochemistry Image:



Anti-GPRC5C antibody LS-A4082 IHC of human pancreas. Immunohistochemistry of formalin-fixed, paraffin-embedded tissue after heat-induced antigen retrieval.

Requested From:

Japan

Laboratory Reagent For In Vitro Research Use Only

Not for resale without prior written consent from LifeSpan BioSciences, Inc.

Created on 9/23/2014

© 2014 LifeSpan BioSciences