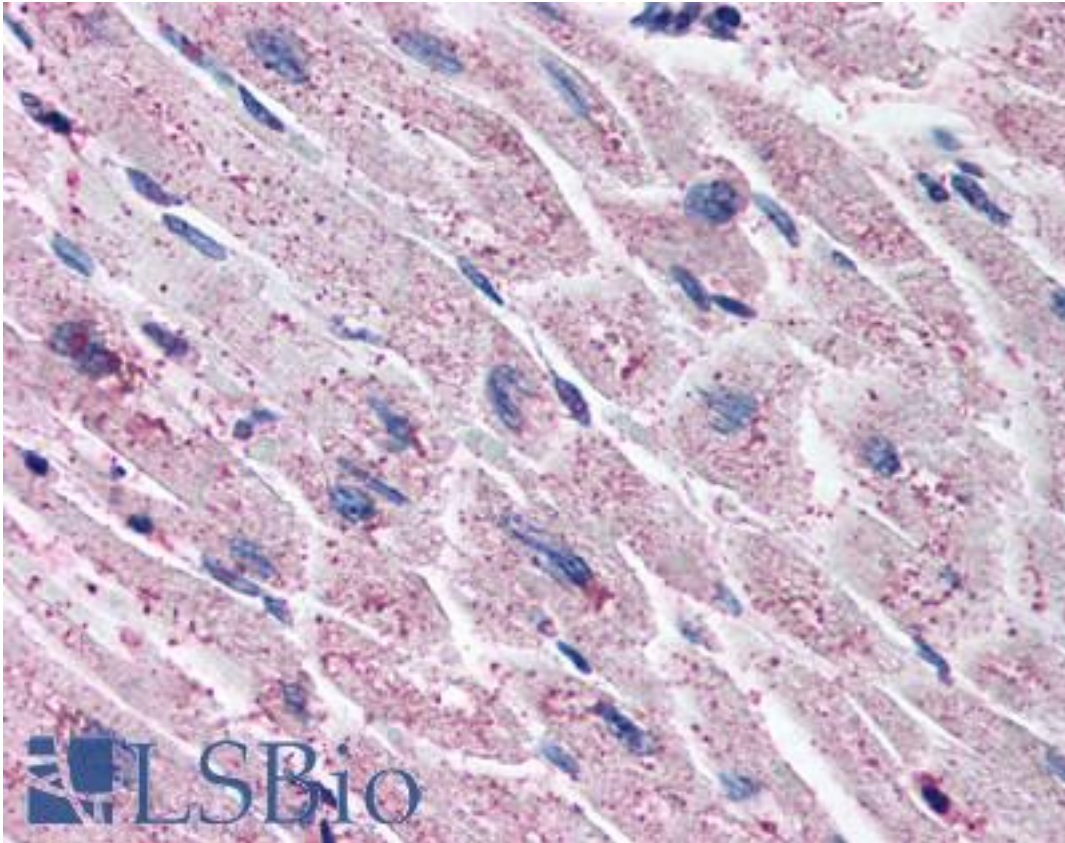


EDNRA / Endothelin A Receptor Rabbit anti-Human Polyclonal (C-Terminus) Antibody - LS-A4072 - LSBio	
<b>CatalogID:</b>	LS-A4072
<b>Target:</b>	endothelin receptor type A (EDNRA)
<b>Synonyms:</b>	EDNRA Antibody, Endothelin receptor subtype A Antibody, Et-a-r Antibody, ETRA Antibody, Endothelin A receptor Antibody, Endothelin eta receptor Antibody, Endothelin type a receptor Antibody, Endothelin-1 receptor Antibody, ETAR Antibody, Endothelin receptor type A Antibody, HET-AR Antibody, Et-a receptor Antibody, ETA Antibody, ETA-R Antibody, Endothelin receptor: subtype a Antibody, Endothelin-1-specific receptor Antibody, ET-A Antibody, ET-RA Antibody
<b>Family / Subfamily:</b>	GPCR / Endothelin
<b>Host</b>	EDNRA antibody was produced in Rabbit
<b>Clonality:</b>	Polyclonal
<b>Immunogen Species:</b>	EDNRA / Endothelin A Receptor antibody was raised against Human
<b>Antigen Type:</b>	Synthetic peptide
<b>Immunogen:</b>	EDNRA / Endothelin A Receptor antibody was raised against synthetic 18 amino acid peptide from C-terminus of human Endothelin A Receptor. Percent identity with other species by BLAST analysis: Human, Gorilla, Gibbon, Marmoset (100%); Monkey, Hamster, Rabbit, Platypus (94%); Panda, Bat, Bovine, Dog, Horse, Pig (89%); Mouse, Sheep, Opossum, Turkey, Chicken (83%).
<b>Specificity:</b>	Human Endothelin A Receptor. BLAST analysis of the peptide immunogen showed no homology with other human proteins.
<b>Epitope:</b>	C-Terminus
<b>Reactivity:</b>	Human, Gorilla, Gibbon
<b>Predicted Reactivity:</b>	Monkey, Hamster, Rabbit
<b>Purification:</b>	Immunoaffinity purified
<b>Presentation:</b>	PBS, 0.1% sodium azide.
<b>Recommended Storage:</b>	Long term: -70°C; Short term: +4°C
<b>Uses:</b>	IHC - Paraffin (3 - 16 µg/ml) (Optimal dilution to be determined by the researcher)
<b>Size:</b>	50 µg
<b>Concentration:</b>	1 mg/ml

**Immunohistochemistry Image:**



Anti-Endothelin A Receptor antibody LS-A4072 IHC of human heart. Immunohistochemistry of formalin-fixed, paraffin-embedded tissue after heat-induced antigen retrieval.

**Requested From:**

Japan

Laboratory Reagent For In Vitro Research Use Only

Not for resale without prior written consent from LifeSpan BioSciences, Inc.

Created on 9/23/2014

© 2014 LifeSpan BioSciences