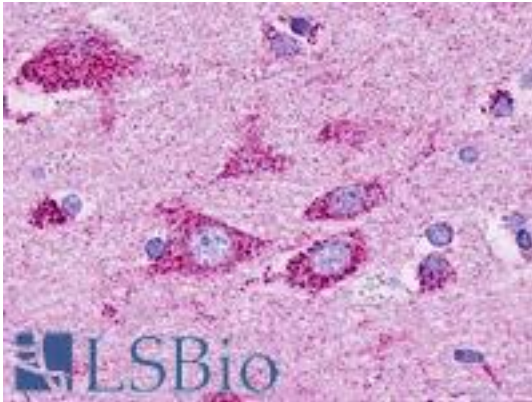


GPR37L1 Rabbit anti-Human Polyclonal (C-Terminus) Antibody - LS-A406 - LSBio

CatalogID:	LS-A406
Target:	G protein-coupled receptor 37 like 1 (GPR37L1)
Synonyms:	GPR37L1 Antibody, ETBRLP2 Antibody, ET(B)R-LP-2 Antibody, ETBR-LP-2 Antibody, GPCR/CNS2 Antibody
Family / Subfamily:	GPCR / Orphan-A
Host	GPR37L1 antibody was produced in Rabbit
Clonality:	Polyclonal
Immunogen Species:	GPR37L1 antibody was raised against Human
Antigen Type:	Synthetic peptide
Immunogen:	GPR37L1 antibody was raised against synthetic 15 amino acid peptide from C-terminus of human GPR37L1. Percent identity with other species by BLAST analysis: Human, Gorilla, Gibbon (100%); Monkey, Marmoset (93%); Horse (87%); Elephant (80%).
Specificity:	Human GPR37L1. BLAST analysis of the peptide immunogen showed no homology with other human proteins.
Epitope:	C-Terminus
Reactivity:	Human, Gorilla, Gibbon
Predicted Reactivity:	Monkey
Purification:	Immunoaffinity purified
Presentation:	PBS, 0.1% sodium azide.
Recommended Storage:	Long term: -70°C; Short term: +4°C
Uses:	IHC - Paraffin (2 - 3 µg/ml) (Optimal dilution to be determined by the researcher)
Size:	50 µg
Concentration:	1 mg/ml

Immunohistochemistry Image:



Anti-GPR37L1 antibody LS-A406 IHC of human brain, cortex. Immunohistochemistry of formalin-fixed, paraffin-embedded tissue after heat-induced antigen retrieval.

Requested From:

Japan

Laboratory Reagent For In Vitro Research Use Only

Not for resale without prior written consent from LifeSpan BioSciences, Inc.

Created on 9/23/2014

© 2014 LifeSpan BioSciences