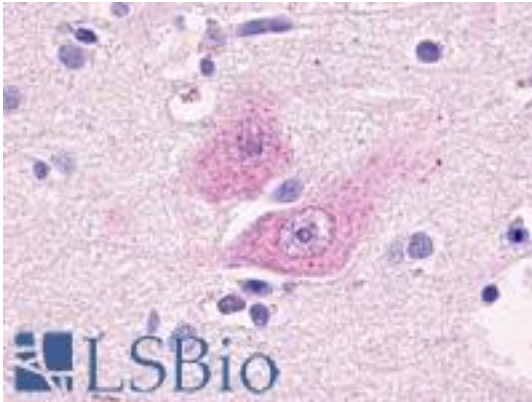


**GPR37L1 Rabbit anti-Human Polyclonal (Cytoplasmic Domain) Antibody - LS-A405 - LSBio**

<b>CatalogID:</b>	LS-A405
<b>Target:</b>	G protein-coupled receptor 37 like 1 (GPR37L1)
<b>Synonyms:</b>	GPR37L1 Antibody, ETBRLP2 Antibody, ET(B)R-LP-2 Antibody, ETBR-LP-2 Antibody, GPCR/CNS2 Antibody
<b>Family / Subfamily:</b>	GPCR / Orphan-A
<b>Host</b>	GPR37L1 antibody was produced in Rabbit
<b>Clonality:</b>	Polyclonal
<b>Immunogen Species:</b>	GPR37L1 antibody was raised against Human
<b>Antigen Type:</b>	Synthetic peptide
<b>Immunogen:</b>	GPR37L1 antibody was raised against synthetic 17 amino acid peptide from 3rd cytoplasmic domain of human GPR37L1. Percent identity with other species by BLAST analysis: Human, Gorilla, Gibbon, Monkey (100%); Marmoset, Mouse, Rat, Hamster, Elephant, Panda, Dog, Horse (94%); Bovine (88%).
<b>Specificity:</b>	Human GPR37L1. BLAST analysis of the peptide immunogen showed no homology with other human proteins.
<b>Epitope:</b>	Cytoplasmic Domain
<b>Reactivity:</b>	Human, Gorilla, Gibbon
<b>Predicted Reactivity:</b>	Monkey, Mouse, Rat, Dog, Hamster, Horse
<b>Purification:</b>	Immunoaffinity purified
<b>Presentation:</b>	PBS, 0.1% sodium azide.
<b>Recommended Storage:</b>	Long term: -70°C; Short term: +4°C
<b>Uses:</b>	IHC - Paraffin (4 - 7 µg/ml) (Optimal dilution to be determined by the researcher)
<b>Size:</b>	50 µg
<b>Concentration:</b>	1 mg/ml

**Immunohistochemistry Image:**



Anti-GPR37L1 antibody LS-A405 IHC of human brain, cortex. Immunohistochemistry of formalin-fixed, paraffin-embedded tissue after heat-induced antigen retrieval.

**Requested From:**

Japan

Laboratory Reagent For In Vitro Research Use Only

Not for resale without prior written consent from LifeSpan BioSciences, Inc.

Created on 9/23/2014

© 2014 LifeSpan BioSciences