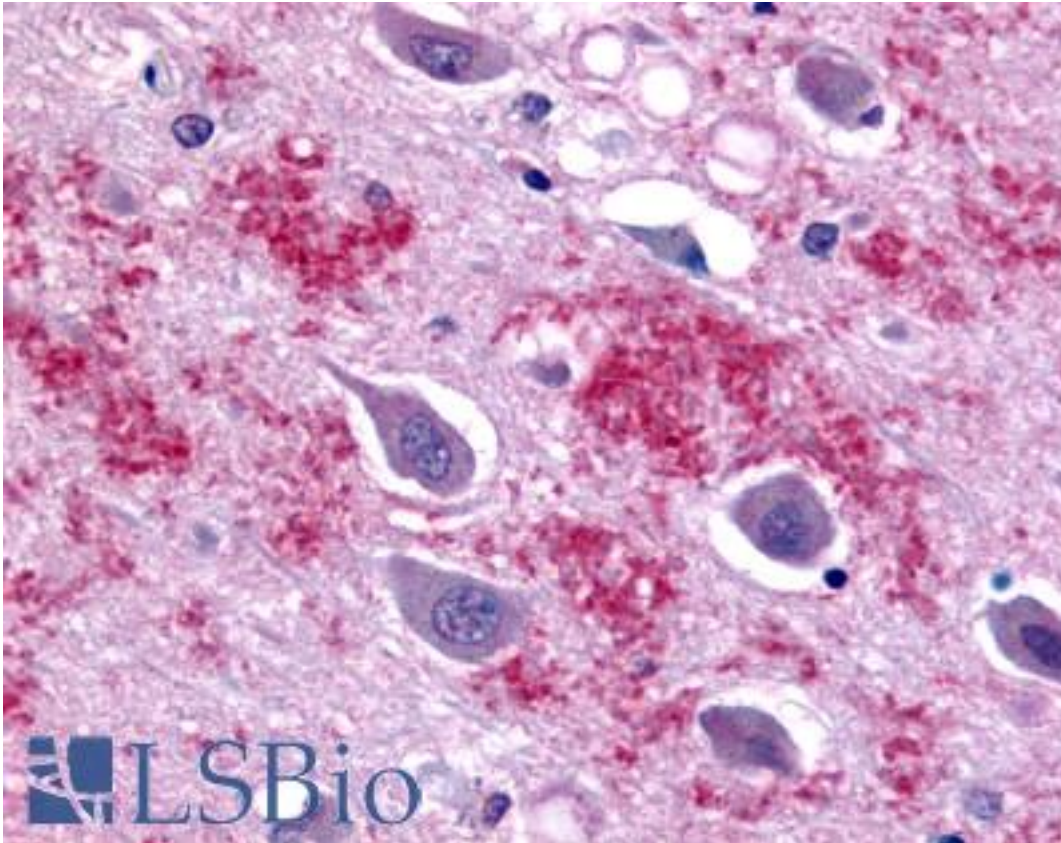


**GALR1 / Galanin Receptor 1 Rabbit anti-Human Polyclonal (C-Terminus) Antibody - LS-A4013 - LSBio**

<b>CatalogID:</b>	LS-A4013
<b>Target:</b>	galanin receptor 1 (GALR1)
<b>Synonyms:</b>	GALR1 Antibody, Galanin receptor type 1 Antibody, Galanin receptor 1 Antibody, Galanin receptor galr1 Antibody, Galanin-1 receptor Antibody, GALNR1 Antibody, Gal receptor 1 Antibody, Gal-r1 Antibody, Galn1r Antibody, Gal-1 receptor Antibody, GAL1-R Antibody, Galanin r1 receptor Antibody, GALNR Antibody, GALR-1 Antibody, Hugal 1-r Antibody
<b>Family / Subfamily:</b>	GPCR / Galanin
<b>Host</b>	GALR1 antibody was produced in Rabbit
<b>Clonality:</b>	Polyclonal
<b>Immunogen Species:</b>	GALR1 / Galanin Receptor 1 antibody was raised against Human
<b>Antigen Type:</b>	Synthetic peptide
<b>Immunogen:</b>	GALR1 / Galanin Receptor 1 antibody was raised against synthetic 20 amino acid peptide from C-terminus of human GALR1. Percent identity with other species by BLAST analysis: Gorilla (100%); Human, Chimpanzee, Orangutan, Gibbon (95%); Monkey (89%).
<b>Specificity:</b>	Human GALR1. BLAST analysis of the peptide immunogen showed no homology with other human proteins.
<b>Epitope:</b>	C-Terminus
<b>Reactivity:</b>	Human, Gorilla
<b>Predicted Reactivity:</b>	Chimpanzee, Orangutan, Gibbon
<b>Purification:</b>	Immunoaffinity purified
<b>Presentation:</b>	PBS, 0.1% sodium azide.
<b>Recommended Storage:</b>	Long term: -70°C; Short term: +4°C
<b>Uses:</b>	IHC - Paraffin (7 µg/ml) (Optimal dilution to be determined by the researcher)
<b>Size:</b>	50 µg
<b>Concentration:</b>	1 mg/ml

**Immunohistochemistry Image:**



Anti-GALR1 antibody LS-A4013 IHC of human brain. Immunohistochemistry of formalin-fixed, paraffin-embedded tissue after heat-induced antigen retrieval.

**Requested From:**

Japan

Laboratory Reagent For In Vitro Research Use Only

Not for resale without prior written consent from LifeSpan BioSciences, Inc.

Created on 9/23/2014

© 2014 LifeSpan BioSciences