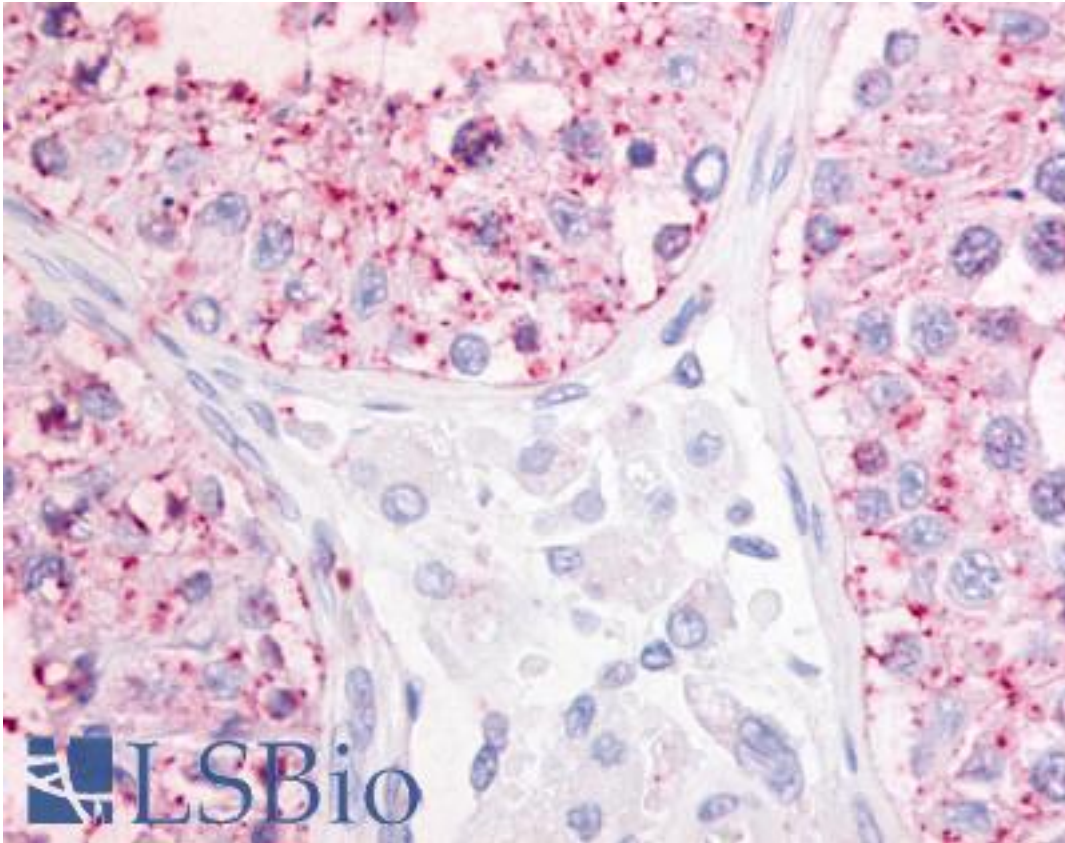


GPR68 / OGR1 Rabbit anti-Human Polyclonal (N-Terminus) Antibody - LS-A3968 - LSBio	
CatalogID:	LS-A3968
Target:	G protein-coupled receptor 68 (GPR68)
Synonyms:	GPR68 Antibody, Brgrb Antibody, G protein-coupled receptor 68 Antibody, G-protein coupled receptor 68 Antibody, OGR1 Antibody, Brgr1 Antibody, GPR12A Antibody, OGR-1 Antibody
Family / Subfamily:	GPCR / Lysophospholipid/Lyso sphingolipid
Host	GPR68 antibody was produced in Rabbit
Clonality:	Polyclonal
Immunogen Species:	GPR68 / OGR1 antibody was raised against Human
Antigen Type:	Synthetic peptide
Immunogen:	GPR68 / OGR1 antibody was raised against synthetic 17 amino acid peptide from N-terminus of human GPR68. Percent identity with other species by BLAST analysis: Human, Gorilla, Gibbon, Monkey, Bat, Elephant, Horse (100%); Marmoset, Mouse, Rat, Dog, Hamster, Rabbit, Pig (94%); Bovine, Panda (88%); Platypus (82%).
Specificity:	Human GPR68. BLAST analysis of the peptide immunogen showed no homology with other human proteins.
Epitope:	N-Terminus
Reactivity:	Human, Gorilla, Gibbon, Bat, Horse
Predicted Reactivity:	Monkey, Mouse, Rat, Dog, Hamster, Pig, Rabbit
Purification:	Immunoaffinity purified
Presentation:	PBS, 0.1% sodium azide.
Recommended Storage:	Long term: -70°C; Short term: +4°C
Usage Summary:	Immunohistochemistry: LS-A3968 was validated for use in immunohistochemistry on a panel of 21 formalin-fixed, paraffin-embedded (FFPE) human tissues after heat induced antigen retrieval in pH 6.0 citrate buffer. After incubation with the primary antibody, slides were incubated with biotinylated secondary antibody, followed by alkaline phosphatase-streptavidin and chromogen. The stained slides were evaluated by a pathologist to confirm staining specificity. The optimal working concentration for LS-A3968 was determined to be 5-10 ug/ml. Antibody does not work for IHC with mouse samples.
Uses:	IHC - Paraffin (5 - 10 µg/ml), ELISA (Optimal dilution to be determined by the researcher)
Size:	50 µg
Concentration:	1 mg/ml

Immunohistochemistry Image:



Anti-GPR68 antibody LS-A3968 IHC of human testis. Immunohistochemistry of formalin-fixed, paraffin-embedded tissue after heat-induced antigen retrieval.

Requested From:

Japan

Laboratory Reagent For In Vitro Research Use Only

Not for resale without prior written consent from LifeSpan BioSciences, Inc.

Created on 9/23/2014

© 2014 LifeSpan BioSciences