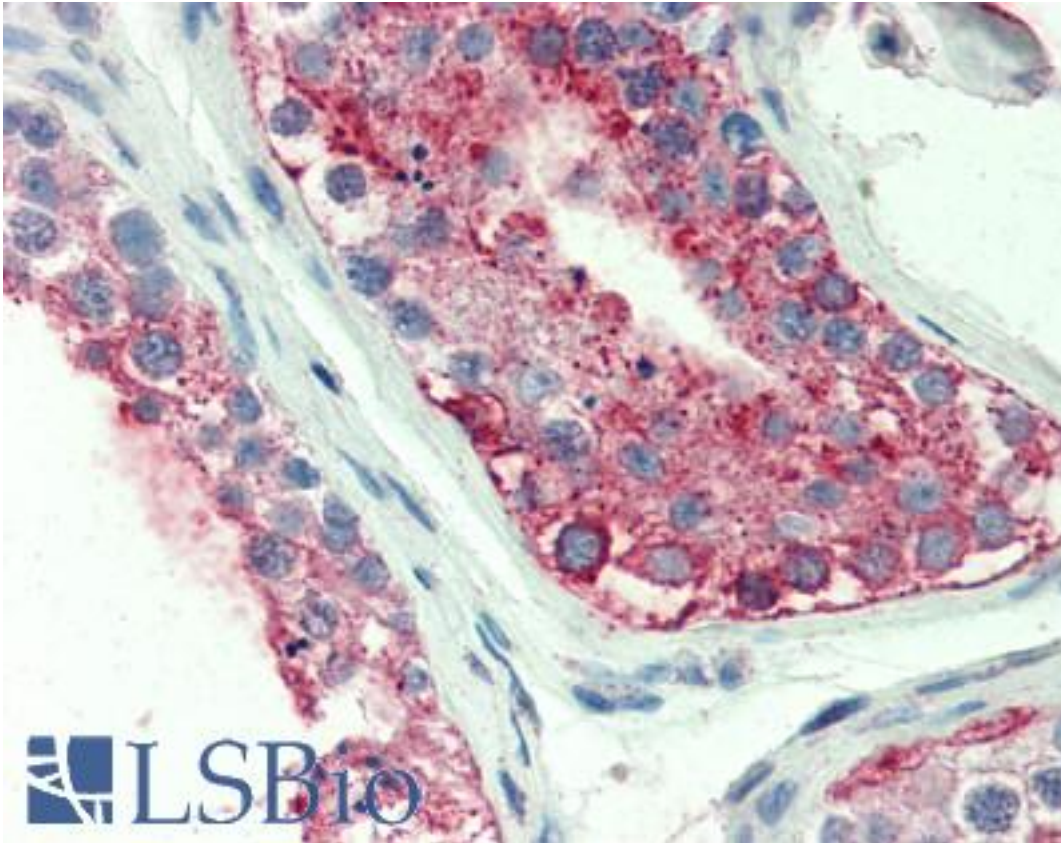


GPCRW / GPR18 Rabbit anti-Human Polyclonal (Extracellular Domain) Antibody - LS-A3953 - LSBio

CatalogID:	LS-A3953
Target:	G protein-coupled receptor 18 (GPR18)
Synonyms:	GPR18 Antibody, GPCRW Antibody, G protein-coupled receptor 18 Antibody, NAGly receptor Antibody, G-protein coupled receptor 18 Antibody, N-arachidonyl glycine receptor Antibody
Family / Subfamily:	GPCR / Orphan-A
Host	GPR18 antibody was produced in Rabbit
Clonality:	Polyclonal
Immunogen Species:	GPCRW / GPR18 antibody was raised against Human
Antigen Type:	Synthetic peptide
Immunogen:	GPCRW / GPR18 antibody was raised against synthetic 18 amino acid peptide from 1st extracellular domain of human GPR18. Percent identity with other species by BLAST analysis: Human, Gorilla, Gibbon, Monkey (100%); Marmoset, Mouse, Hamster, Panda, Dog, Horse (94%); Rat, Bat, Bovine (89%); Elephant, Rabbit, Pig (83%).
Specificity:	Human GPR18. BLAST analysis of the peptide immunogen showed no homology with other human proteins, except GPR174 (44%).
Epitope:	Extracellular Domain
Reactivity:	Human, Gorilla, Gibbon
Predicted Reactivity:	Monkey, Mouse, Dog, Hamster, Horse
Purification:	Immunoaffinity purified
Presentation:	PBS, 0.1% sodium azide.
Recommended Storage:	Long term: -70°C; Short term: +4°C
Uses:	IHC - Paraffin (6 µg/ml) (Optimal dilution to be determined by the researcher)
Size:	50 µg
Concentration:	0.5 mg/ml

Immunohistochemistry Image:



Anti-GPR18 antibody LS-A3953 IHC of human testis. Immunohistochemistry of formalin-fixed, paraffin-embedded tissue after heat-induced antigen retrieval.

Requested From:

Japan

Laboratory Reagent For In Vitro Research Use Only

Not for resale without prior written consent from LifeSpan BioSciences, Inc.

Created on 9/23/2014

© 2014 LifeSpan BioSciences