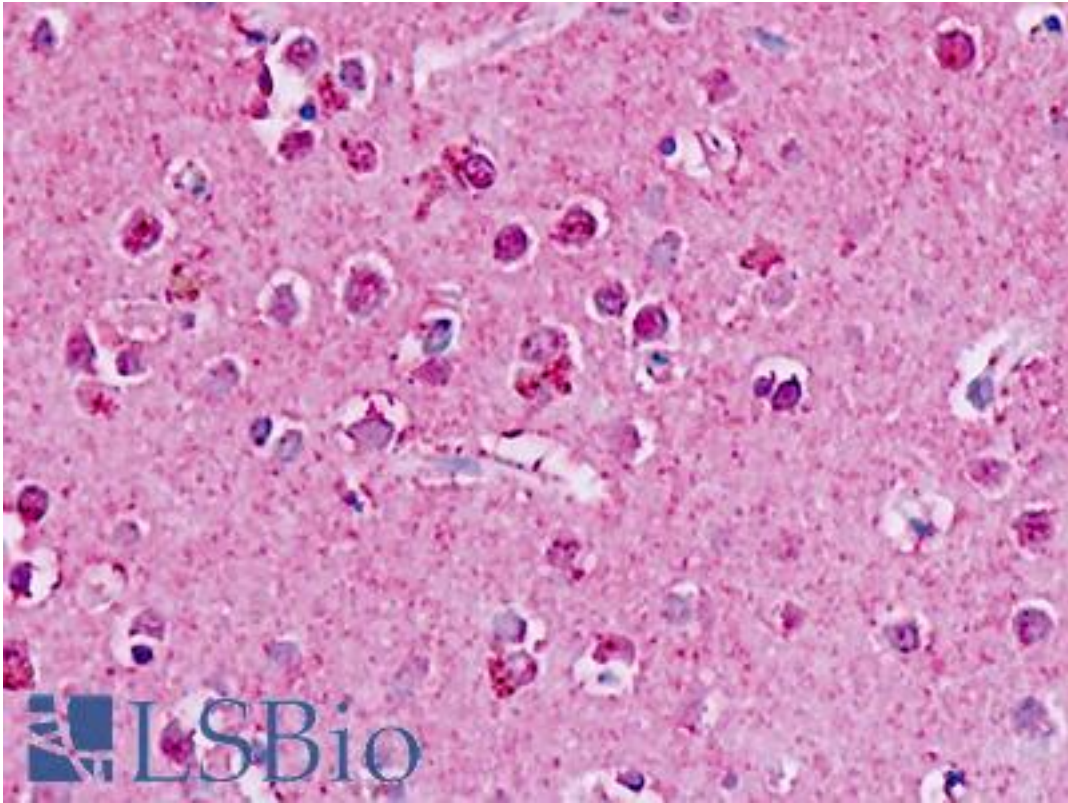


**GPR182 / ADMR Rabbit anti-Human Polyclonal Antibody - LS-A392 - LSBio**

<b>CatalogID:</b>	LS-A392
<b>Target:</b>	G protein-coupled receptor 182 (GPR182)
<b>Synonyms:</b>	GPR182 Antibody, 7TMR Antibody, Adrenomedullin L1 receptor Antibody, AM-R Antibody, AMR Antibody, ADMR Antibody, Adrenomedullin receptor Antibody, G protein-coupled receptor 182 Antibody, HrhAMR Antibody, G-protein coupled receptor 182 Antibody, Gamrh Antibody, HAMR Antibody, RAMR Antibody, G10D Antibody
<b>Family / Subfamily:</b>	GPCR / Orphan-A
<b>Host</b>	GPR182 antibody was produced in Rabbit
<b>Clonality:</b>	Polyclonal
<b>Immunogen Species:</b>	GPR182 / ADMR antibody was raised against Human
<b>Antigen Type:</b>	Synthetic peptide
<b>Immunogen:</b>	GPR182 / ADMR antibody was raised against synthetic 18 amino acid peptide from C-terminus of human GPR182 / ADMR. Percent identity with other species by BLAST analysis: Human (100%); Gorilla, Gibbon (94%).
<b>Reactivity:</b>	Human
<b>Predicted Reactivity:</b>	Gorilla, Gibbon
<b>Purification:</b>	Immunoaffinity purified
<b>Presentation:</b>	PBS, 0.1% sodium azide.
<b>Recommended Storage:</b>	Long term: -70°C; Short term: +4°C
<b>Uses:</b>	IHC - Paraffin (5 - 10 µg/ml) (Optimal dilution to be determined by the researcher)
<b>Size:</b>	50 µg
<b>Concentration:</b>	1 mg/ml

**Immunohistochemistry Image:**



Human, Brain, neurons: Formalin-Fixed Paraffin-Embedded (FFPE)

**Requested From:**

Japan

Laboratory Reagent For In Vitro Research Use Only

Not for resale without prior written consent from LifeSpan BioSciences, Inc.

Created on 9/23/2014

© 2014 LifeSpan BioSciences