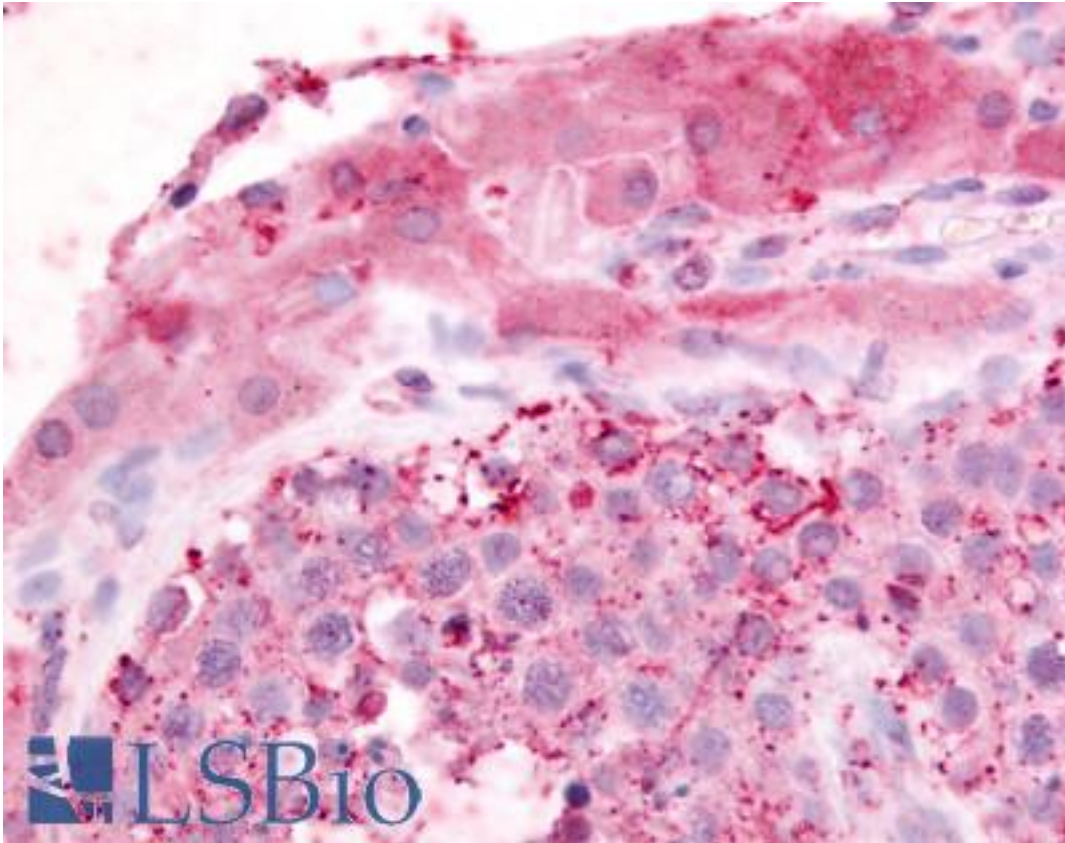


GPR182 / ADMR Rabbit anti-Human Polyclonal (N-Terminus) Antibody - LS-A390 - LSBio	
<b>CatalogID:</b>	LS-A390
<b>Target:</b>	G protein-coupled receptor 182 (GPR182)
<b>Synonyms:</b>	GPR182 Antibody, 7TMR Antibody, Adrenomedullin L1 receptor Antibody, AM-R Antibody, AMR Antibody, ADMR Antibody, Adrenomedullin receptor Antibody, G protein-coupled receptor 182 Antibody, HrhAMR Antibody, G-protein coupled receptor 182 Antibody, Gamrh Antibody, HAMR Antibody, RAMR Antibody, G10D Antibody
<b>Family / Subfamily:</b>	GPCR / Orphan-A
<b>Host</b>	GPR182 antibody was produced in Rabbit
<b>Clonality:</b>	Polyclonal
<b>Immunogen Species:</b>	GPR182 / ADMR antibody was raised against Human
<b>Antigen Type:</b>	Synthetic peptide
<b>Immunogen:</b>	GPR182 / ADMR antibody was raised against synthetic 18 amino acid peptide from N-terminus of human GPR182 / ADMR. Percent identity with other species by BLAST analysis: Human, Gorilla (100%); Gibbon, Marmoset (94%); Monkey (83%).
<b>Specificity:</b>	Human GPR182 / ADMR. BLAST analysis of the peptide immunogen showed no homology with other human proteins.
<b>Epitope:</b>	N-Terminus
<b>Reactivity:</b>	Human, Gorilla
<b>Predicted Reactivity:</b>	Gibbon, Monkey
<b>Purification:</b>	Immunoaffinity purified
<b>Presentation:</b>	PBS, 0.1% sodium azide.
<b>Recommended Storage:</b>	Long term: -70°C; Short term: +4°C
<b>Usage Summary:</b>	Immunohistochemistry: LS-A390 was validated for use in immunohistochemistry on a panel of 21 formalin-fixed, paraffin-embedded (FFPE) human tissues after heat induced antigen retrieval in pH 6.0 citrate buffer. After incubation with the primary antibody, slides were incubated with biotinylated secondary antibody, followed by alkaline phosphatase-streptavidin and chromogen. The stained slides were evaluated by a pathologist to confirm staining specificity. The optimal working concentration for LS-A390 was determined to be 10 ug/ml.
<b>Uses:</b>	IHC - Paraffin (10 µg/ml), ELISA (Optimal dilution to be determined by the researcher)
<b>Size:</b>	50 µg
<b>Concentration:</b>	1 mg/ml

**Immunohistochemistry Image:**



Anti-GPR182 / ADMR antibody LS-A390 IHC of human testis. Immunohistochemistry of formalin-fixed, paraffin-embedded tissue after heat-induced antigen retrieval.

**Requested From:**

Japan

Laboratory Reagent For In Vitro Research Use Only

Not for resale without prior written consent from LifeSpan BioSciences, Inc.

Created on 9/23/2014

© 2014 LifeSpan BioSciences