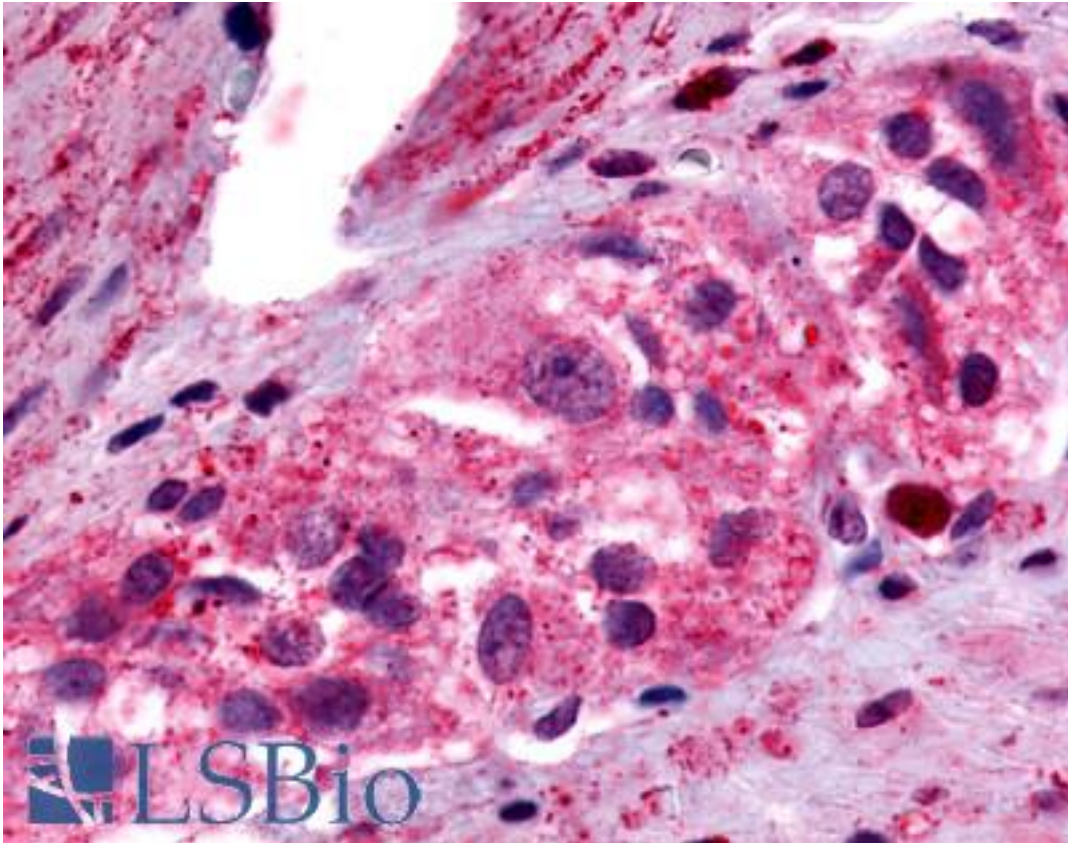


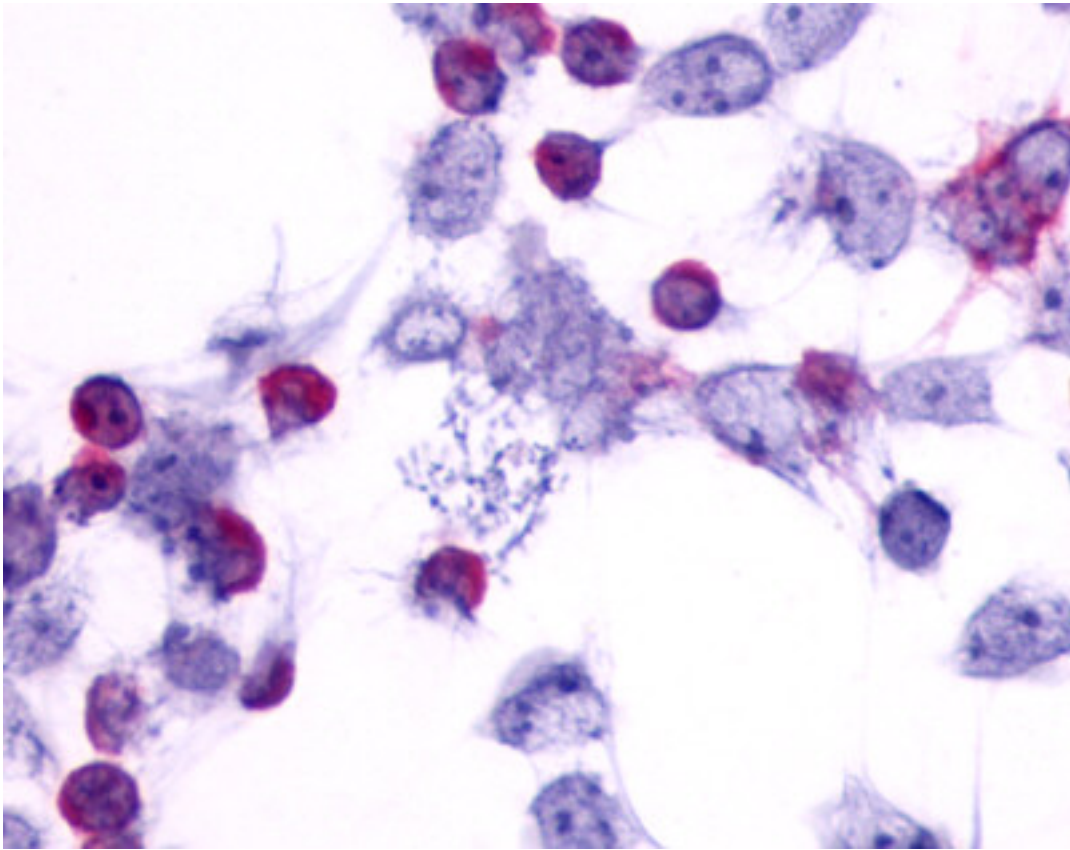
PTGER4 / EP4 Rabbit anti-Human Polyclonal (N-Terminus) Antibody - LS-A3898 - LSBio

CatalogID:	LS-A3898
Target:	prostaglandin E receptor 4 (subtype EP4) (PTGER4)
Synonyms:	PTGER4 Antibody, EP4 Antibody, EP4 prostaglandin receptor Antibody, EP4R Antibody, PGE receptor EP4 subtype Antibody, Prostanoid EP4 receptor Antibody, Prostaglandin E receptor 4 Antibody, PGE receptor, EP4 subtype Antibody, PGE2 receptor EP4 subtype Antibody
Family / Subfamily:	GPCR / Prostanoid
Host	PTGER4 antibody was produced in Rabbit
Clonality:	Polyclonal
Immunogen Species:	PTGER4 / EP4 antibody was raised against Human
Antigen Type:	Synthetic peptide
Immunogen:	PTGER4 / EP4 antibody was raised against synthetic 14 amino acid peptide from N-terminal extracellular domain of human PTGER4 / EP4. Percent identity with other species by BLAST analysis: Human (100%); Chimpanzee, Gorilla, Marmoset (93%); Gibbon, Monkey (86%).
Specificity:	Human PTGER4 / EP4. BLAST analysis of the peptide immunogen showed no homology with other human proteins.
Epitope:	N-Terminus
Reactivity:	Human
Predicted Reactivity:	Chimpanzee, Gorilla, Monkey
Purification:	Immunoaffinity purified
Presentation:	PBS, 0.1% sodium azide.
Recommended Storage:	Long term: -70°C; Short term: +4°C
Uses:	IHC - Paraffin (8 - 16 µg/ml), ICC (Optimal dilution to be determined by the researcher)
Size:	50 µg
Concentration:	1 mg/ml

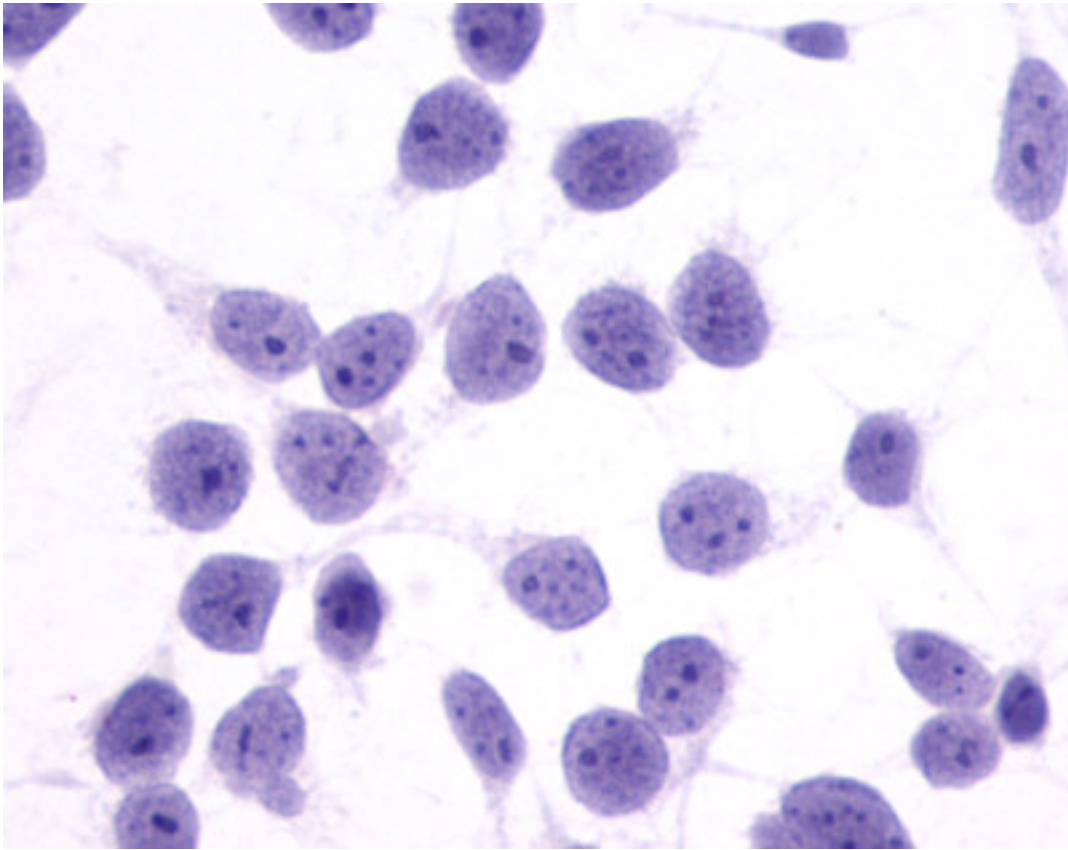
Immunohistochemistry Image:



Anti-PTGER4 / EP4 antibody LS-A3898 IHC of human colon, ganglion.
Immunohistochemistry of formalin-fixed, paraffin-embedded tissue after heat-induced antigen retrieval.



Cells expressing vector only - immunostained with target antibody



Cells expressing vector only - immunostained with target antibody

Requested From:

Japan

Laboratory Reagent For In Vitro Research Use Only

Not for resale without prior written consent from LifeSpan BioSciences, Inc.

Created on 9/23/2014

© 2014 LifeSpan BioSciences