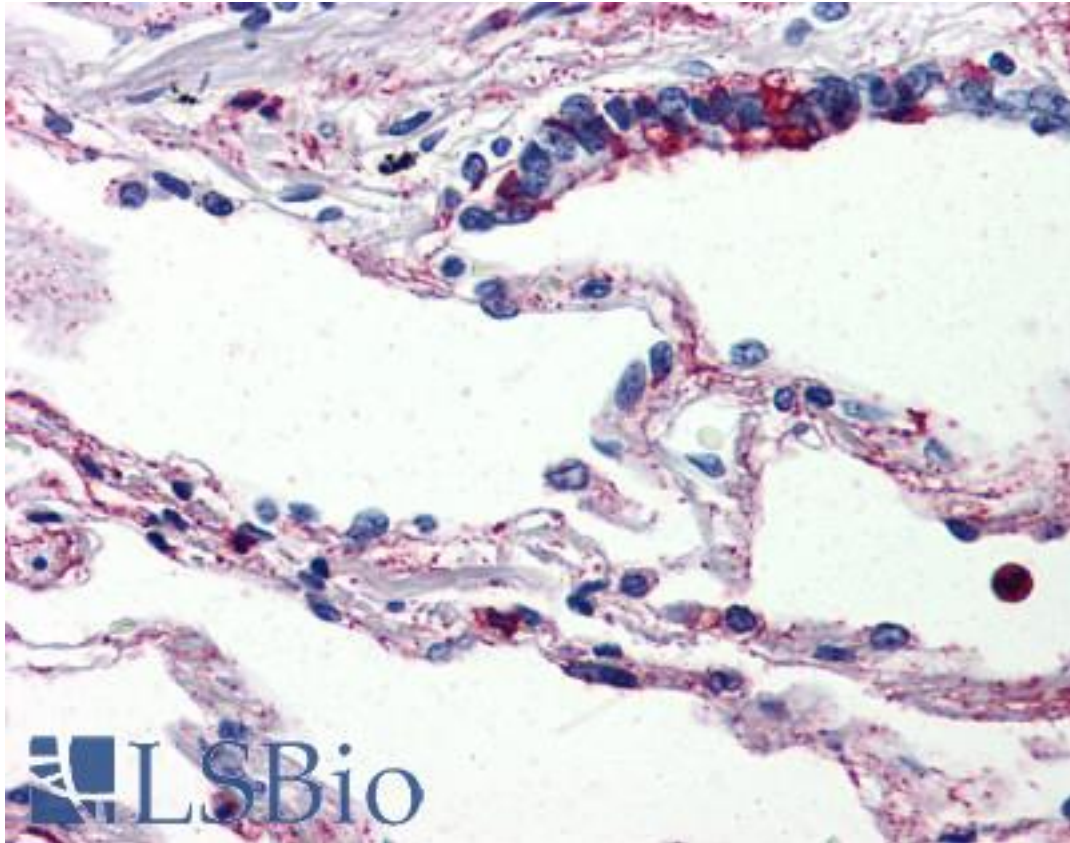


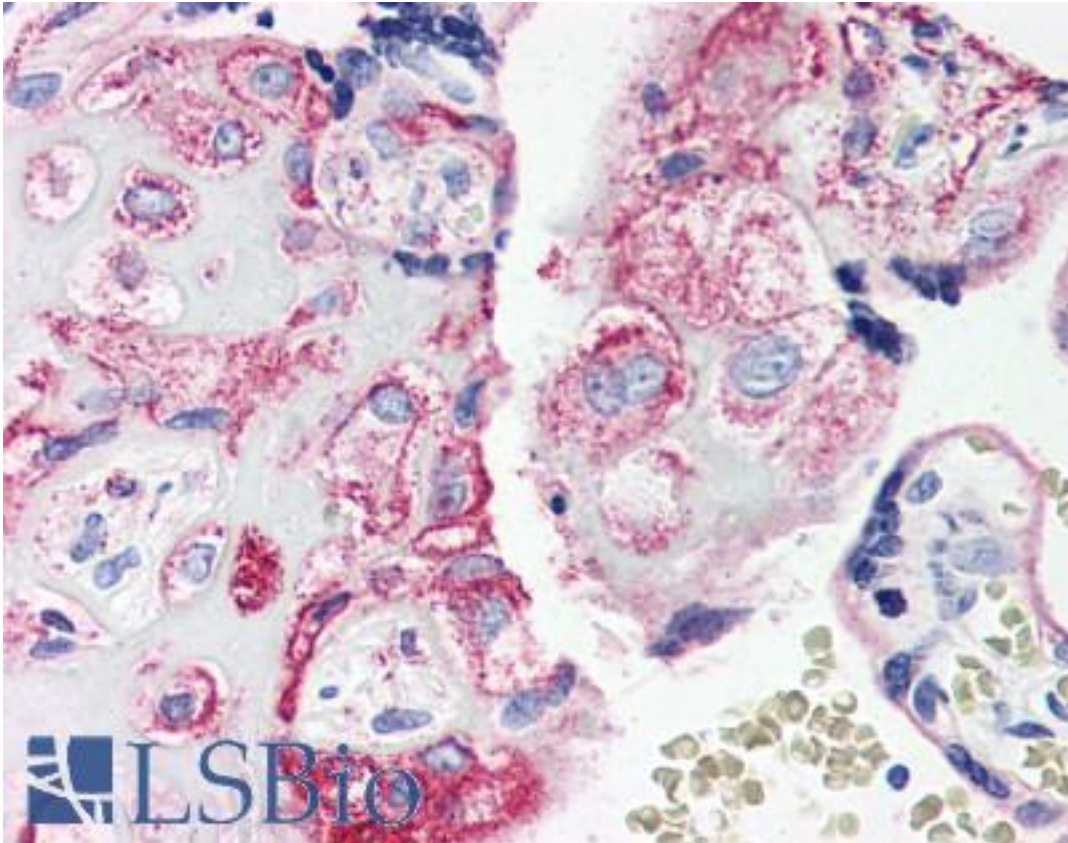
C5AR1 / CD88 / C5a Receptor Rabbit anti-Human Polyclonal (Internal) Antibody - LS-A3870 - LSBio	
CatalogID:	LS-A3870
Target:	complement component 5a receptor 1 (C5AR1)
Synonyms:	C5AR1 Antibody, C5A Antibody, C5a-R Antibody, C5a ligand Antibody, C5a receptor Antibody, CD88 Antibody, C5a anaphylatoxin receptor Antibody, C5AR Antibody, C5R1 Antibody, CD88 antigen Antibody
Family / Subfamily:	GPCR / Anaphylatoxin
Host	C5AR1 antibody was produced in Rabbit
Clonality:	Polyclonal
Immunogen Species:	C5AR1 / CD88 / C5a Receptor antibody was raised against Human
Antigen Type:	Synthetic peptide
Immunogen:	C5AR1 / CD88 / C5a Receptor antibody was raised against synthetic 18 amino acid peptide from internal region of human C5AR1 / CD88. Percent identity with other species by BLAST analysis: Human, Chimpanzee, Gorilla, Orangutan, Monkey (100%); Gibbon (89%).
Specificity:	Human C5AR1 / CD88. BLAST analysis of the peptide immunogen showed no homology with other human proteins.
Epitope:	Internal
Reactivity:	Human, Chimpanzee, Gorilla, Orangutan, Monkey
Purification:	Immunoaffinity purified
Presentation:	PBS, 0.1% sodium azide.
Recommended Storage:	Long term: -70°C; Short term: +4°C
Usage Summary:	Immunohistochemistry: LS-A3870 was validated for use in immunohistochemistry on a panel of 21 formalin-fixed, paraffin-embedded (FFPE) human tissues after proteinase K antigen retrieval. After incubation with the primary antibody, slides were incubated with biotinylated secondary antibody, followed by alkaline phosphatase-streptavidin and chromogen. The stained slides were evaluated by a pathologist to confirm staining specificity. The optimal working concentration for LS-A3870 was determined to be 10 ug/ml.
Uses:	IHC - Paraffin (10 µg/ml) (Optimal dilution to be determined by the researcher)
Size:	50 µg
Concentration:	1 mg/ml

Immunohistochemistry Image:



Anti-C5AR1 / CD88 antibody LS-A3870 IHC of human lung. Immunohistochemistry of formalin-fixed, paraffin-embedded tissue after heat-induced antigen retrieval.

Immunohistochemistry Image:



Anti-C5AR1 / CD88 antibody LS-A3870 IHC of human placenta. Immunohistochemistry of formalin-fixed, paraffin-embedded tissue after heat-induced antigen retrieval.

Requested From:

Japan

Laboratory Reagent For In Vitro Research Use Only

Not for resale without prior written consent from LifeSpan BioSciences, Inc.

Created on 9/23/2014

© 2014 LifeSpan BioSciences