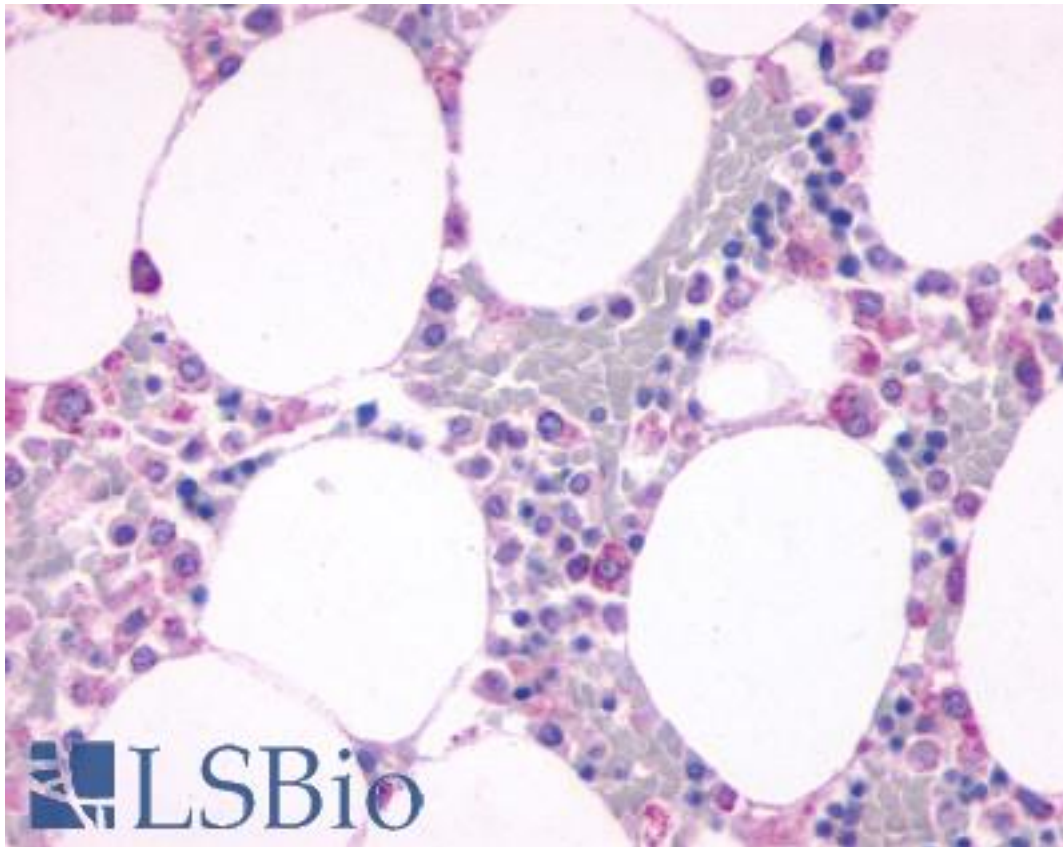
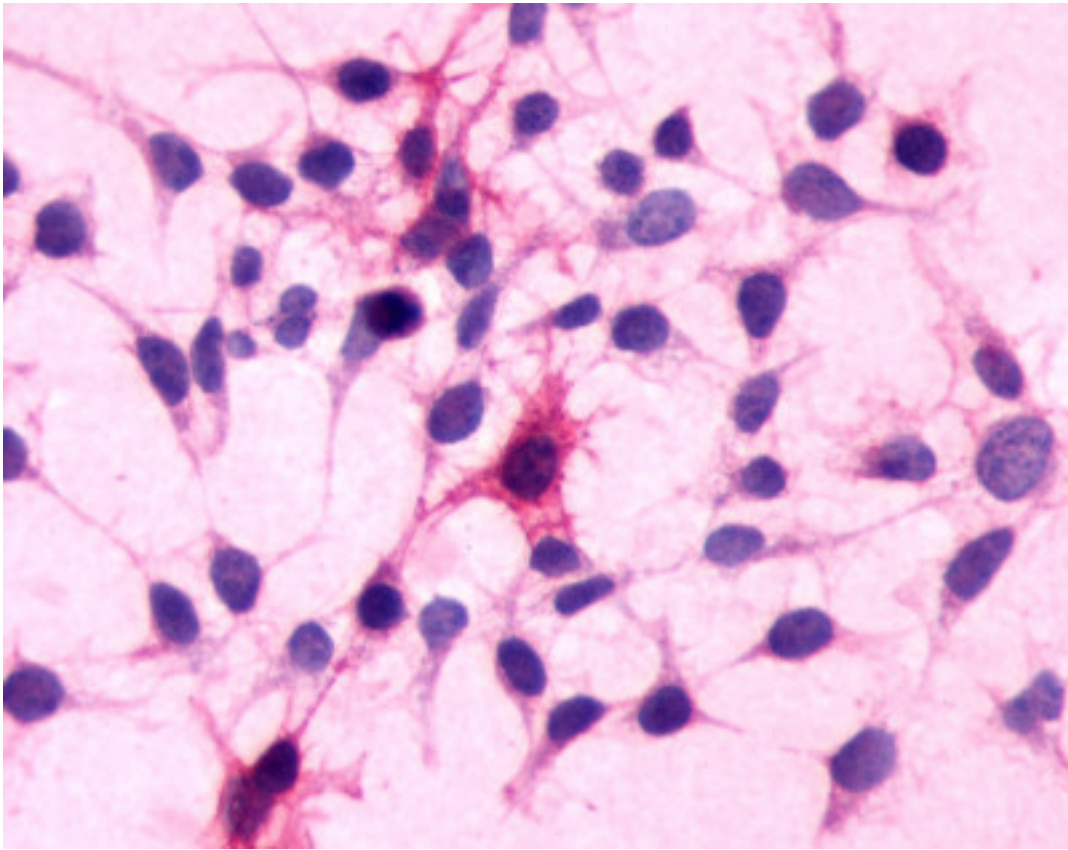


C5AR1 / CD88 / C5a Receptor Rabbit anti-Human Polyclonal (N-Terminus) Antibody - LS-A3867 - LSBio	
CatalogID:	LS-A3867
Target:	complement component 5a receptor 1 (C5AR1)
Synonyms:	C5AR1 Antibody, C5A Antibody, C5a-R Antibody, C5a ligand Antibody, C5a receptor Antibody, CD88 Antibody, C5a anaphylatoxin receptor Antibody, C5AR Antibody, C5R1 Antibody, CD88 antigen Antibody
Family / Subfamily:	GPCR / Anaphylatoxin
Host	C5AR1 antibody was produced in Rabbit
Clonality:	Polyclonal
Immunogen Species:	C5AR1 / CD88 / C5a Receptor antibody was raised against Human
Antigen Type:	Synthetic peptide
Immunogen:	C5AR1 / CD88 / C5a Receptor antibody was raised against synthetic 18 amino acid peptide from N-terminal extracellular domain of human C5AR1 / CD88. Percent identity with other species by BLAST analysis: Human, Chimpanzee (100%); Gorilla, Monkey (94%); Gibbon (89%); Orangutan (83%).
Specificity:	Human C5AR1 / CD88. BLAST analysis of the peptide immunogen showed no homology with other human proteins.
Epitope:	N-Terminus
Reactivity:	Human, Chimpanzee
Predicted Reactivity:	Gorilla, Monkey
Purification:	Immunoaffinity purified
Presentation:	PBS, 0.1% sodium azide.
Recommended Storage:	Long term: -70°C; Short term: +4°C
Uses:	IHC - Paraffin (4 - 36 µg/ml), ICC (Optimal dilution to be determined by the researcher)
Size:	50 µg
Concentration:	1 mg/ml

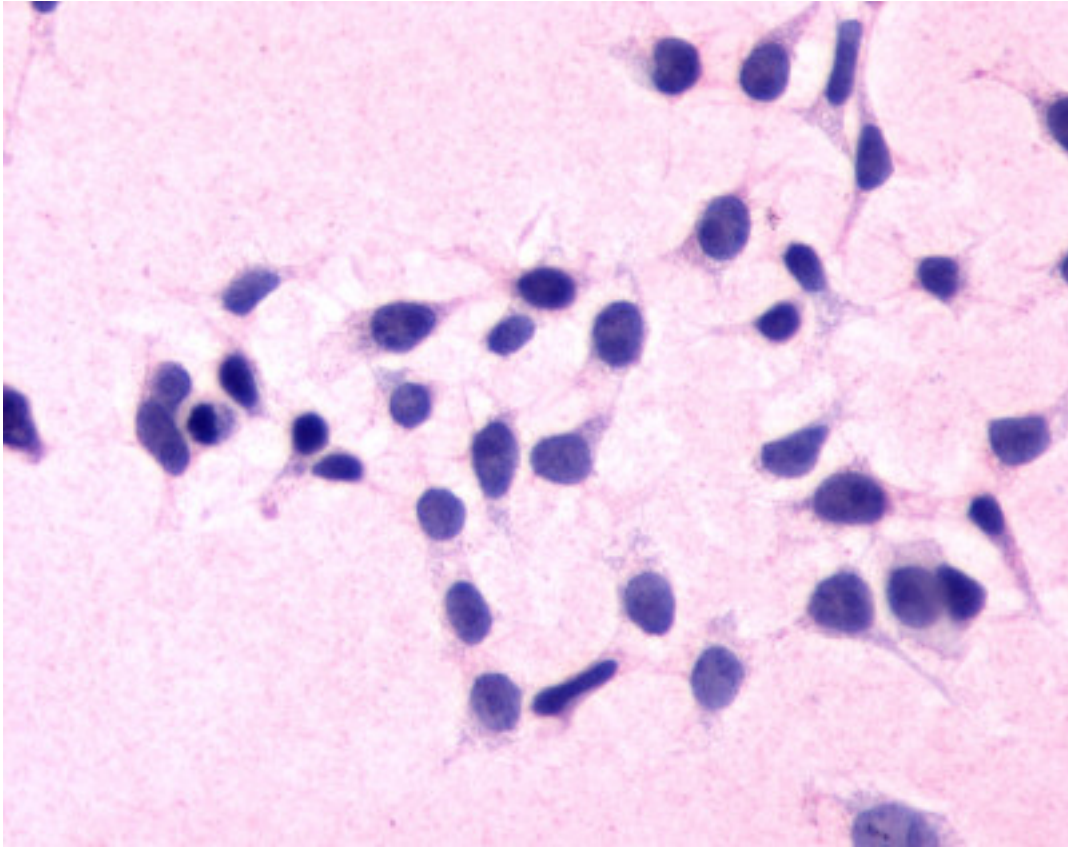
Immunohistochemistry Image:



Anti-C5AR1 / CD88 antibody LS-A3867 IHC of human bone marrow. Immunohistochemistry of formalin-fixed, paraffin-embedded tissue after heat-induced antigen retrieval.



Cells expressing vector only - immunostained with target antibody



Cells expressing vector only - immunostained with target antibody

Requested From:

Japan

Laboratory Reagent For In Vitro Research Use Only

Not for resale without prior written consent from LifeSpan BioSciences, Inc.

Created on 9/23/2014

© 2014 LifeSpan BioSciences