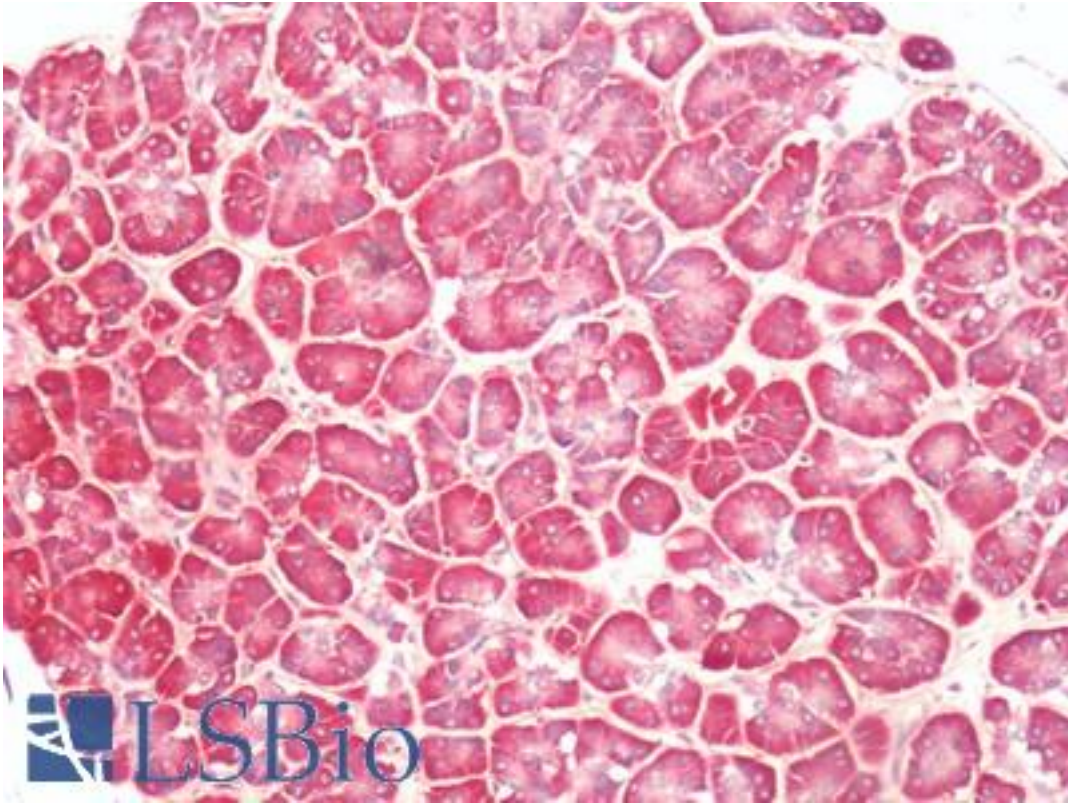


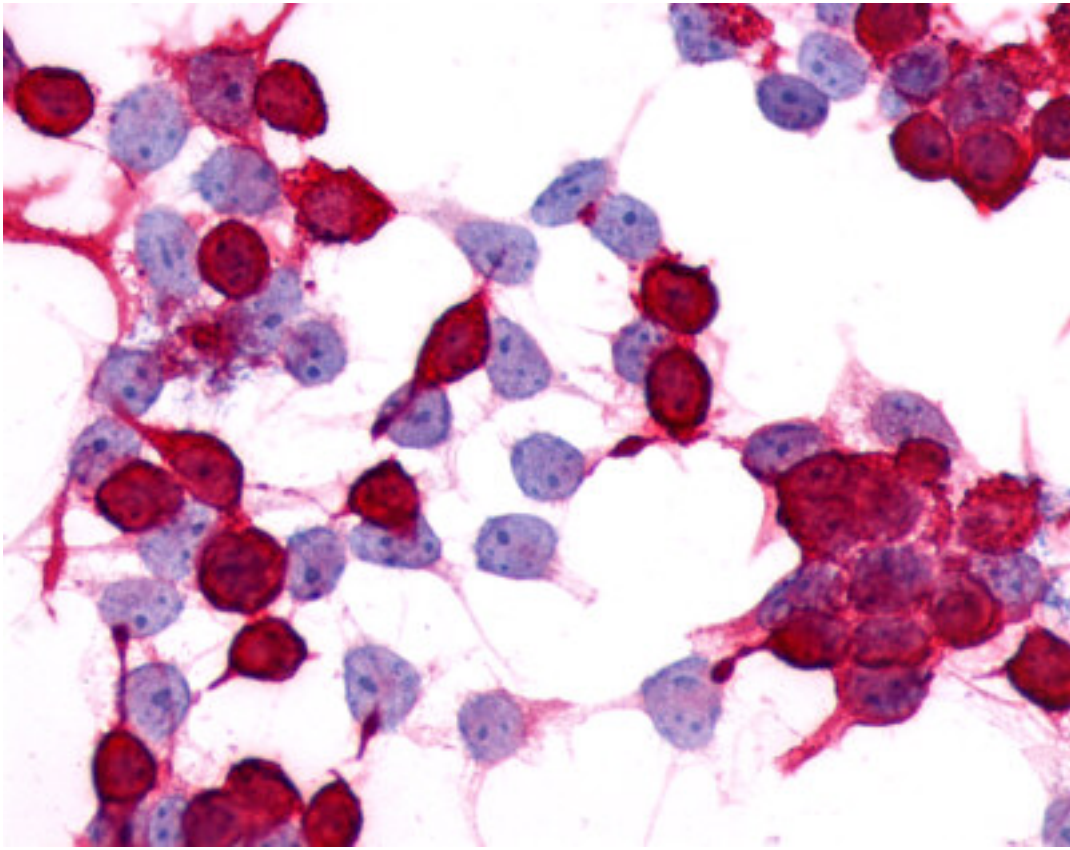
PTGER4 / EP4 Rabbit anti-Human Polyclonal (C-Terminus) Antibody - LS-A385 - LSBio

CatalogID:	LS-A385
Target:	prostaglandin E receptor 4 (subtype EP4) (PTGER4)
Synonyms:	PTGER4 Antibody, EP4 Antibody, EP4 prostaglandin receptor Antibody, EP4R Antibody, PGE receptor EP4 subtype Antibody, Prostanoid EP4 receptor Antibody, Prostaglandin E receptor 4 Antibody, PGE receptor, EP4 subtype Antibody, PGE2 receptor EP4 subtype Antibody
Family / Subfamily:	GPCR / Prostanoid
Host	PTGER4 antibody was produced in Rabbit
Clonality:	Polyclonal
Immunogen Species:	PTGER4 / EP4 antibody was raised against Human
Antigen Type:	Synthetic peptide
Immunogen:	PTGER4 / EP4 antibody was raised against synthetic 18 amino acid peptide from C-terminus of human PTGER4 / EP4. Percent identity with other species by BLAST analysis: Human, Chimpanzee, Gorilla, Gibbon, Monkey, Marmoset, Mouse, Rat, Hamster, Elephant, Panda, Bat, Dog, Bovine, Horse (100%); Turkey, Chicken (94%); Rabbit, Opossum, Guinea pig (89%).
Specificity:	Human PTGER4 / EP4. BLAST analysis of the peptide immunogen showed no homology with other human proteins.
Epitope:	C-Terminus
Reactivity:	Human, Chimpanzee, Gorilla, Gibbon, Monkey, Mouse, Rat, Bat, Bovine, Dog, Hamster, Horse
Predicted Reactivity:	Chicken
Purification:	Immunoaffinity purified
Presentation:	PBS, 0.1% sodium azide.
Recommended Storage:	Long term: -70°C; Short term: +4°C
Uses:	IHC - Paraffin (3.6 µg/ml), ICC (Optimal dilution to be determined by the researcher)
Size:	50 µg
Concentration:	1 mg/ml

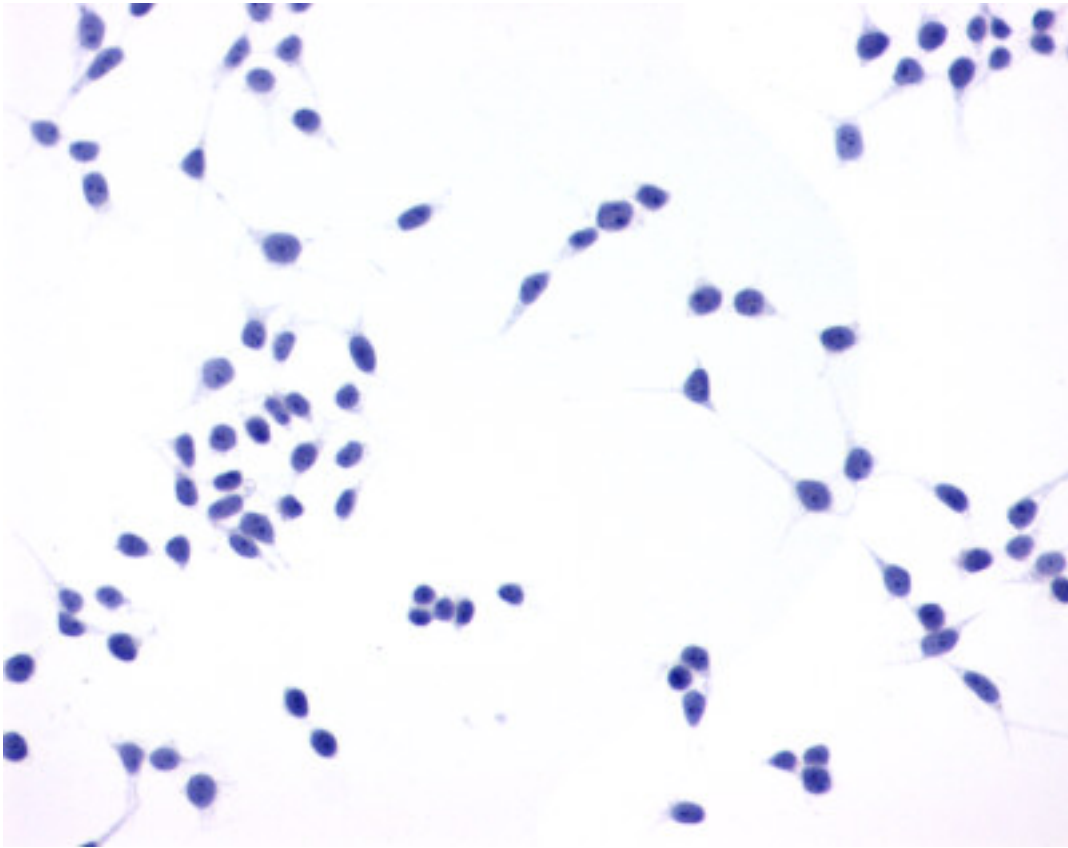
Immunohistochemistry Image:



Human, Pancreas: Formalin-Fixed Paraffin-Embedded (FFPE)



Cells expressing vector only - immunostained with target antibody



Cells expressing vector only - immunostained with target antibody

Requested From:

Japan

Laboratory Reagent For In Vitro Research Use Only

Not for resale without prior written consent from LifeSpan BioSciences, Inc.

Created on 9/23/2014

© 2014 LifeSpan BioSciences