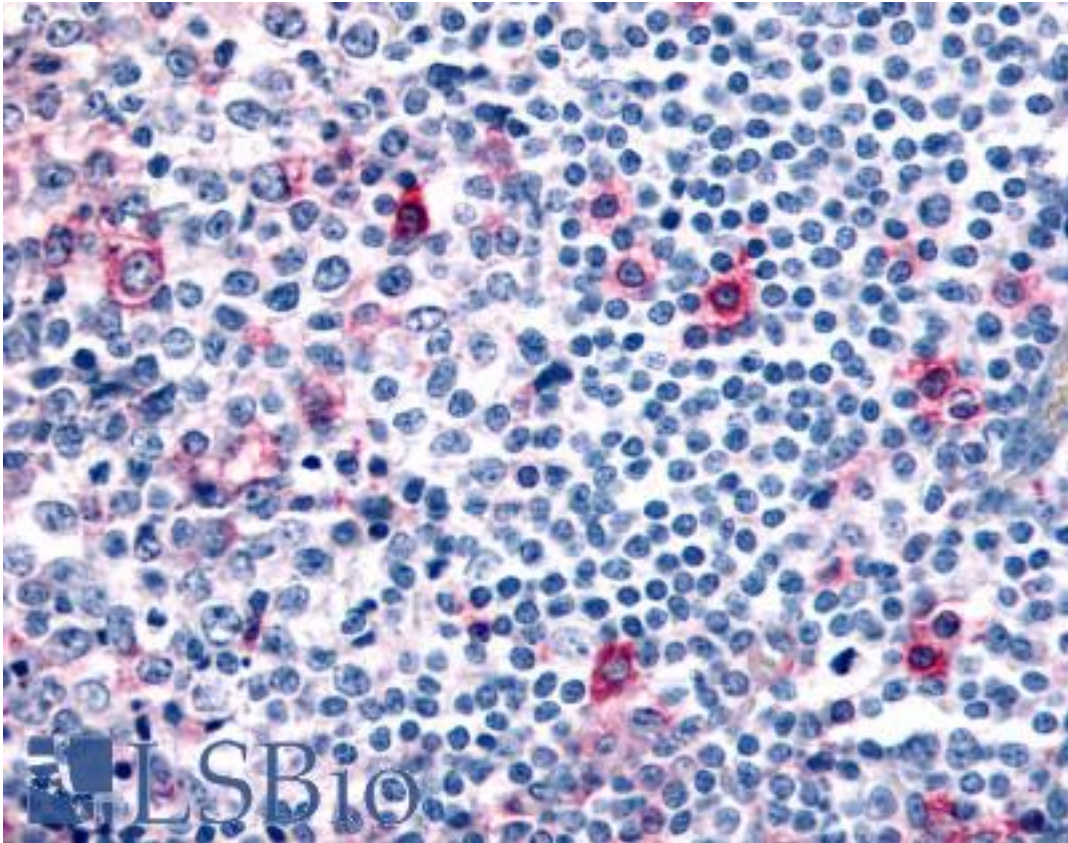


CCR8 Rabbit anti-Human Polyclonal (N-Terminus) Antibody - LS-A3845 - LSBio

CatalogID:	LS-A3845
Target:	chemokine (C-C motif) receptor 8 (CCR8)
Synonyms:	CCR8 Antibody, C-C chemokine receptor type 8 Antibody, CC chemokine receptor CHEMR1 Antibody, CC-CKR-8 Antibody, Chemokine (C-C) receptor 8 Antibody, CDw198 antigen Antibody, CKRL1 Antibody, CMKBR8 Antibody, Chemokine receptor-like 1 Antibody, CMKBRL2 Antibody, CKR-L1 Antibody, GPRCY6 Antibody, TER1 Antibody, C-C CKR-8 Antibody, CC chemokine receptor 8 Antibody, CC-chemokine receptor chemr1 Antibody, CCR-8 Antibody, CDw198 Antibody, CY6 Antibody, GPR-CY6 Antibody
Family / Subfamily:	GPCR / Chemokine
Host	CCR8 antibody was produced in Rabbit
Clonality:	Polyclonal
Immunogen Species:	CCR8 antibody was raised against Human
Antigen Type:	Synthetic peptide
Immunogen:	CCR8 antibody was raised against synthetic 18 amino acid peptide from N-terminal extracellular domain of human CCR8. Percent identity with other species by BLAST analysis: Human, Gorilla (100%); Gibbon, Marmoset, Elephant, Panda (83%).
Specificity:	Human CCR8. BLAST analysis of the peptide immunogen showed no homology with other human proteins.
Epitope:	N-Terminus
Reactivity:	Human, Gorilla
Purification:	Immunoaffinity purified
Presentation:	PBS, 0.1% sodium azide.
Recommended Storage:	Long term: -70°C; Short term: +4°C
Uses:	IHC - Paraffin (28 µg/ml) (Optimal dilution to be determined by the researcher)
Size:	50 µg
Concentration:	1 mg/ml

Immunohistochemistry Image:



Anti-CCR8 antibody LS-A3845 IHC of human tonsil, germinal center and mantle zone. Immunohistochemistry of formalin-fixed, paraffin-embedded tissue after heat-induced antigen retrieval.

Requested From:

Japan

Laboratory Reagent For In Vitro Research Use Only

Not for resale without prior written consent from LifeSpan BioSciences, Inc.

Created on 9/23/2014

© 2014 LifeSpan BioSciences