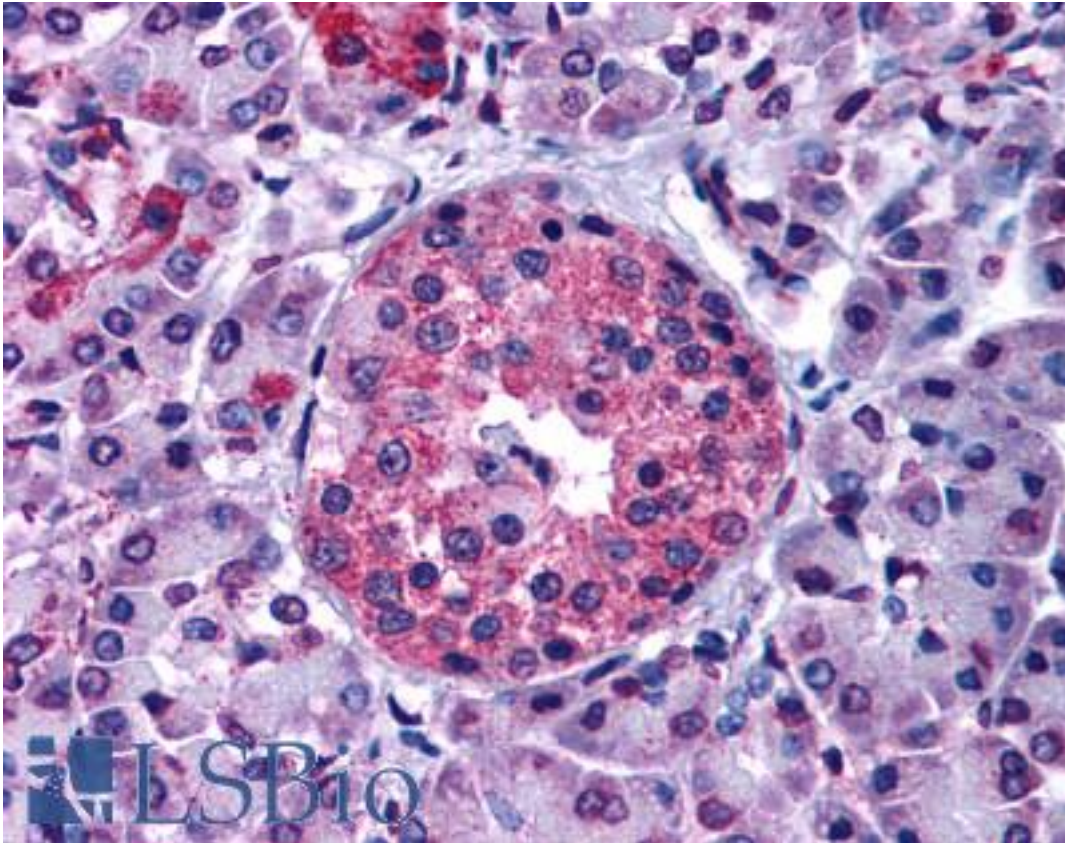


GIPR / GIP Receptor Rabbit anti-Human Polyclonal (N-Terminus) Antibody - LS-A3840 - LSBio

CatalogID:	LS-A3840
Target:	gastric inhibitory polypeptide receptor (GIPR)
Synonyms:	GIPR Antibody, GIP receptor Antibody, PGQTL2 Antibody, GIP-R Antibody
Family / Subfamily:	GPCR / Gastric inhibitory polypeptide
Host	GIPR antibody was produced in Rabbit
Clonality:	Polyclonal
Immunogen Species:	GIPR / GIP Receptor antibody was raised against Human
Antigen Type:	Synthetic peptide
Immunogen:	GIPR / GIP Receptor antibody was raised against synthetic 18 amino acid peptide from N-terminal extracellular domain of human GIPR. Percent identity with other species by BLAST analysis: Human, Gorilla (100%); Panda, Bovine, Dog (94%); Marmoset, Horse (89%); Hamster, Rabbit (83%).
Specificity:	Human GIPR. BLAST analysis of the peptide immunogen showed no homology with other human proteins, except GHRHR (100%), ZNF839 (61%).
Epitope:	N-Terminus
Reactivity:	Human, Gorilla
Predicted Reactivity:	Bovine, Dog
Purification:	Immunoaffinity purified
Presentation:	PBS, 0.1% sodium azide.
Recommended Storage:	Long term: -70°C; Short term: +4°C
Uses:	IHC - Paraffin (7 - 17 µg/ml) (Optimal dilution to be determined by the researcher)
Size:	50 µg
Concentration:	1 mg/ml

Immunohistochemistry Image:



Anti-GIPR antibody LS-A3840 IHC of human pancreas. Immunohistochemistry of formalin-fixed, paraffin-embedded tissue after heat-induced antigen retrieval.

Requested From:

Japan

Laboratory Reagent For In Vitro Research Use Only

Not for resale without prior written consent from LifeSpan BioSciences, Inc.

Created on 9/23/2014

© 2014 LifeSpan BioSciences